

ONONDAGA COUNTY GREEN INFRASTRUCTURE PROGRAM

BID REF # 7075

PLAN SET VOL. I OF II

PEARL STREET PARKING LOT

FOR

COUNTY OF ONONDAGA, NEW YORK

DEPARTMENT OF WATER

ENVIRONMENT PROTECTION (OCDWEP)

OCDWEP COMMISSIONER: PATRICIA PASTELLA, P.E.

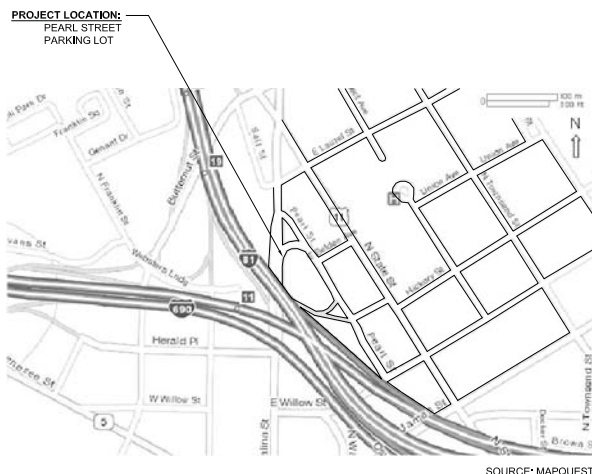
NOTE: IT IS A VIOLATION OF THE NEW YORK STATE EDUCATION LAW FOR ANY PERSON TO ALTER THIS DOCUMENT IN ANY WAY, UNLESS ACTING UNDER THE DIRECTION OF A LICENSED PROFESSIONAL ENGINEER. IF A DOCUMENT BEARING THE SEAL OF AN ENGINEER IS ALTERED, THE ALTERING ENGINEER SHALL AFFIX TO THE DOCUMENT THEIR SEAL AND THE NOTATION "ALTERED BY" FOLLOWED BY THEIR SIGNATURE AND THE DATE OF SUCH ALTERATION, AND A SPECIFIC DESCRIPTION OF THE ALTERATION.



NO.	DATE	DESCRIPTION	BY	APPROVED BY
1		ISSN	D. WIBLE	
2		DR		
3		CHK	S. SMITH	
4		REVISION		
5				
6				
7				
8				
9				
10				
11				
12				

DRAWING INDEX

SHEET NO.	DRAWING NO.	DESCRIPTION
1	C-01	COVER SHEET
2	C-02	EXISTING CONDITIONS
3	C-03	LAYOUT AND GRADING PLAN
4	C-04	STORMWATER PLAN
5	C-05	DETAILS SHEET 1 OF 5
6	C-06	DETAILS SHEET 2 OF 5
7	C-07	DETAILS SHEET 3 OF 5
8	C-08	DETAILS SHEET 4 OF 5
9	C-09	DETAILS SHEET 5 OF 5
10	C-10	SECTIONS
11	C-11	EROSION AND SEDIMENT CONTROL PLAN
12	C-12	EROSION AND SEDIMENT CONTROL DETAILS



LOCATION MAP
NOT TO SCALE



APPROVED: _____
OCDWEP COMMISSIONER : PATRICIA PASTELLA, P.E.

DATE: _____

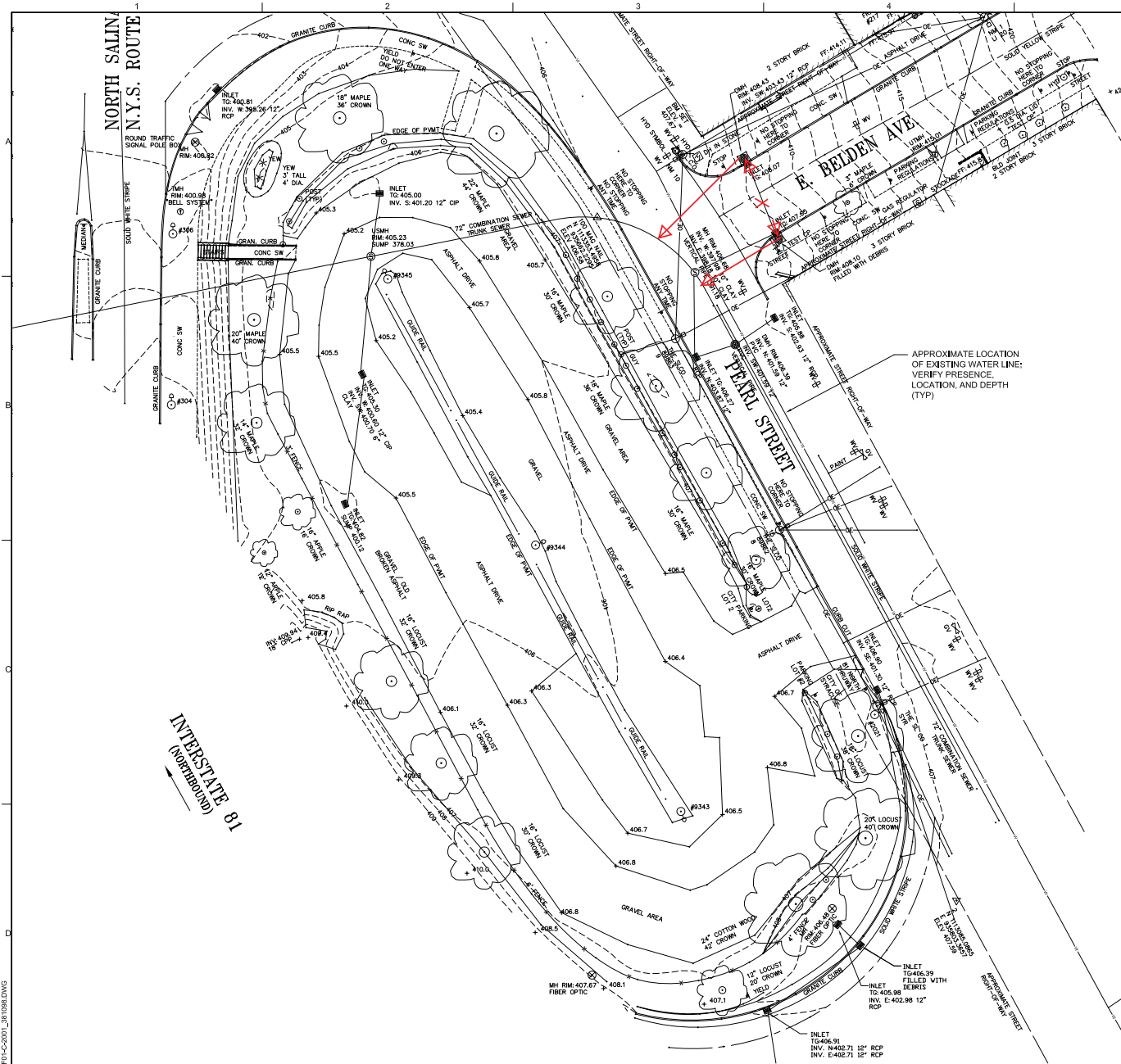
CH2MHILL

CIVIL
COVER SHEET
PEARL STREET PARKING LOT

CH2M HILL
280 ELWOOD DAVIS ROAD
SUITE 200
LIVERPOOL, NY 13088

ISSUED FOR BIDDING AND CONSTRUCTION

VERIFY SCALE	
BAR IS ONE INCH ON ORIGINAL DRAWING.	1" = 1'
DATE	JULY 2, 2010
PROJ	381098
DWG	C-01
SHEET	1 OF 12



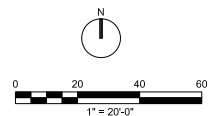
NOTE: IT IS A VIOLATION OF THE NEW YORK STATE EDUCATION LAW FOR ANY PERSON TO ALTER THIS DOCUMENT IN ANY WAY, UNLESS ACTING UNDER THE DIRECTION OF A LICENSED PROFESSIONAL ENGINEER. IF A DOCUMENT BEARING THE SEAL OF AN ENGINEER IS ALTERED, THE ALTERING ENGINEER SHALL AFFIX TO THE DOCUMENT THEIR SEAL AND THE NOTATION "ALTERED BY" FOLLOWED BY THEIR SIGNATURE AND THE DATE OF SUCH ALTERATION, AND A SPECIFIC DESCRIPTION OF THE ALTERATION.

NOTE: THIS TOPOGRAPHIC SURVEY MAP WAS PREPARED BY FISHER ASSOCIATES ON 4/9/10 FOR THE "CSO PROGRAM MANAGEMENT, SITE F-01, PEARL STREET PARKING LOT, 400 BLOCK OF PEARL STREET, CITY OF SYRACUSE, ONONDAGA COUNTY, NY". THE WATER LINE WAS ADDED LATER BY CH2M HILL AS PER AVAILABLE CITY GIS INFORMATION AND ITS LOCATION IS CONSIDERED APPROXIMATE (AS NOTED ON THIS PLAN).

APPROXIMATE LOCATION OF EXISTING WATER LINE; VERIFY PRESENCE, LOCATION, AND DEPTH (TYP)

EXISTING LEGEND

- PROPERTY LINE/EASE/LEASE PARCEL LINE
- RIGHT-OF-WAY LINE
- - - EASEMENT LINE
- BUILDING LINE
- FENCE LINE
- EDGE OF WATER, STREAM OR DITCH
- EDGE OF WOODS OR BRUSH
- SA — SANITARY SEWER LINE W/MANHOLE & C.O.
- ST — STORM SEWER LINE W/MH & CATCH BASIN
- W — WATER LINE W/HYDRANT, VALVE & VAULT
- E — ELECTRIC LINE W/PULLBOX, METER & MANHOLE
- G — NATURAL GAS LINE W/METER & VALVE
- OE, OT, OC — OVERHEAD ELECTRIC, TELEPHONE & CABLE LINE
- T — UNDERGROUND TELEPHONE LINE
- FO — UNDERGROUND FIBER OPTIC LINE
- H — HEATING LINE (STEAM)
- TS — TRAFFIC POLE, SIGNAL & TRAFFIC PULLBOX
- TC — TRAFFIC CONTROL LINE
- U — UTILITY POLE, GUY, LIGHT POLE & TOP MOUNT LIGHT



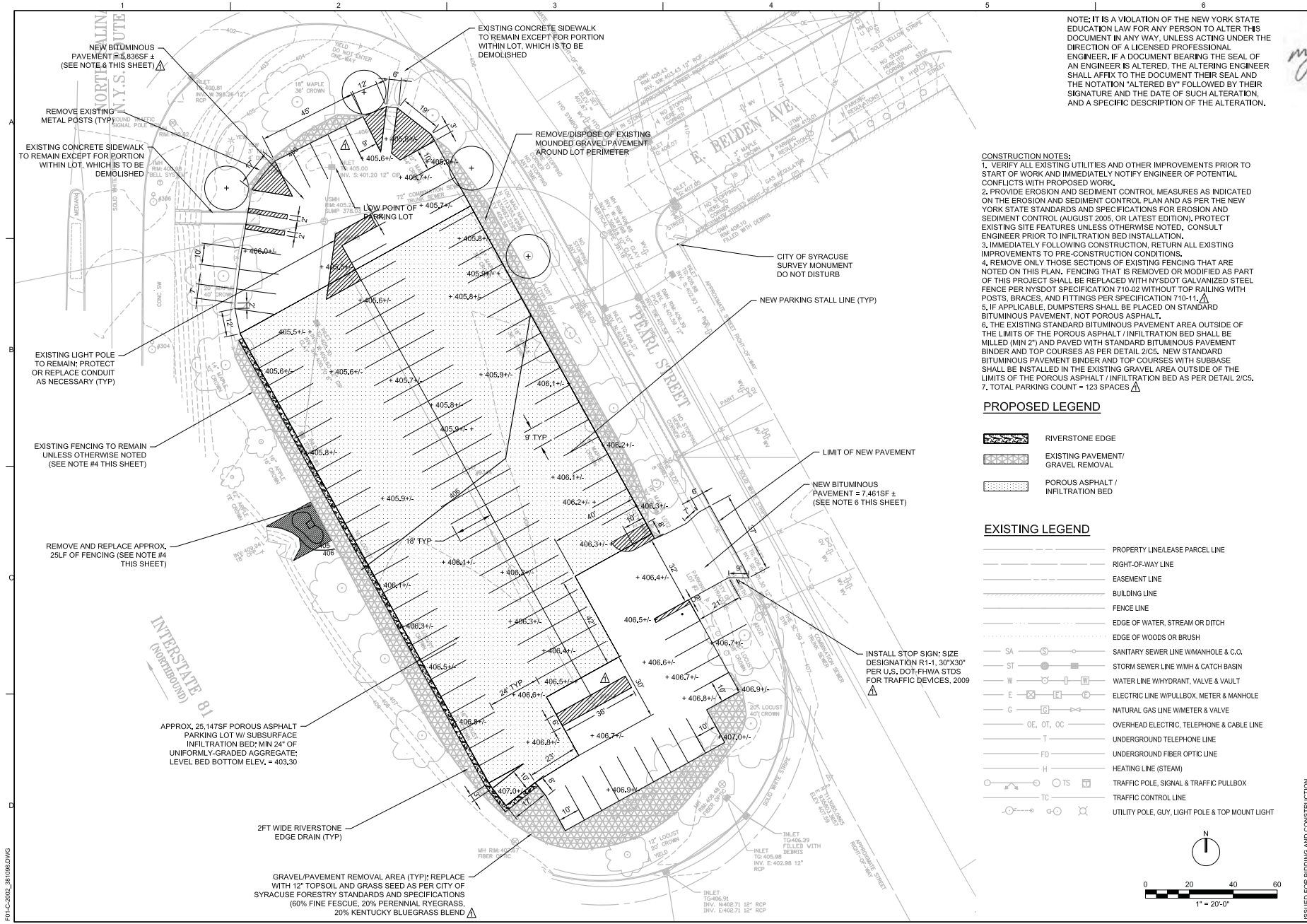
NO.	DATE	DESCRIPTION	BY	APPROVED BY
1	05/21/10	ISSUE FOR PERMITS	D. WIELE	A. POTTS
2	06/01/10	REVISION	S. SMITH	A. POTTS
3	06/01/10	REVISION	S. SMITH	A. POTTS

CH2M
280 ELWOOD DAMS ROAD
SUITE 200
LIVERPOOL, NY 13088

CH2MHILL
CIVIL
EXISTING CONDITIONS
PEARL STREET PARKING LOT

VERIFY SCALE
BAR IS ONE INCH ON ORIGINAL DRAWING.

DATE	JULY 2, 2010
PROJ	381098
DWG	C-02
SHEET	2 OF 12



NOTE: IT IS A VIOLATION OF THE NEW YORK STATE EDUCATION LAW FOR ANY PERSON TO ALTER THIS DOCUMENT IN ANY WAY, UNLESS ACTING UNDER THE DIRECTION OF A LICENSED PROFESSIONAL ENGINEER. IF A DOCUMENT BEARING THE SEAL OF AN ENGINEER IS ALTERED, THE ALTERING ENGINEER SHALL AFFIX TO THE DOCUMENT THEIR SEAL AND THE NOTATION "ALTERED BY" FOLLOWED BY THEIR SIGNATURE AND THE DATE OF SUCH ALTERATION, AND A SPECIFIC DESCRIPTION OF THE ALTERATION.

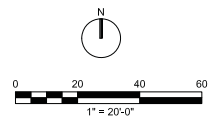
- CONSTRUCTION NOTES:**
1. VERIFY ALL EXISTING UTILITIES AND OTHER IMPROVEMENTS PRIOR TO START OF WORK AND IMMEDIATELY NOTIFY ENGINEER OF POTENTIAL CONFLICTS WITH PROPOSED WORK.
 2. PROVIDE EROSION AND SEDIMENT CONTROL MEASURES AS INDICATED ON THE EROSION AND SEDIMENT CONTROL PLAN AND AS PER THE NEW YORK STATE STANDARDS AND SPECIFICATIONS FOR EROSION AND SEDIMENT CONTROL (AUGUST 2005, OR LATEST EDITION), PROTECT EXISTING SITE FEATURES UNLESS OTHERWISE NOTED. CONSULT ENGINEER PRIOR TO INFILTRATION BED INSTALLATION.
 3. IMMEDIATELY FOLLOWING CONSTRUCTION, RETURN ALL EXISTING IMPROVEMENTS TO PRE-CONSTRUCTION CONDITIONS.
 4. REMOVE ONLY THOSE SECTIONS OF EXISTING FENCING THAT ARE NOTED ON THIS PLAN. FENCING THAT IS REMOVED OR MODIFIED AS PART OF THIS PROJECT SHALL BE REPLACED WITH NYSDOT GALVANIZED STEEL FENCE PER NYSDOT SPECIFICATION 710-02 WITHOUT TOP RAILING WITH POSTS, BRACES, AND FITTINGS PER SPECIFICATION 710-11.
 5. IF APPLICABLE, DUMPSTERS SHALL BE PLACED ON STANDARD BITUMINOUS PAVEMENT, NOT POROUS ASPHALT.
 6. THE EXISTING STANDARD BITUMINOUS PAVEMENT AREA OUTSIDE OF THE LIMITS OF THE POROUS ASPHALT / INFILTRATION BED SHALL BE MILLED (MIN 2") AND PAVED WITH STANDARD BITUMINOUS PAVEMENT BINDER AND TOP COURSES AS PER DETAIL 2/C5. NEW STANDARD BITUMINOUS PAVEMENT BINDER AND TOP COURSES WITH SUBBASE SHALL BE INSTALLED IN THE EXISTING GRAVEL AREA OUTSIDE OF THE LIMITS OF THE POROUS ASPHALT / INFILTRATION BED AS PER DETAIL 2/C5.
 7. TOTAL PARKING COUNT = 123 SPACES

PROPOSED LEGEND

- RIVERSTONE EDGE
- EXISTING PAVEMENT/ GRAVEL REMOVAL
- POROUS ASPHALT / INFILTRATION BED

EXISTING LEGEND

- PROPERTY LINE/RELEASE PARCEL LINE
- RIGHT-OF-WAY LINE
- EASEMENT LINE
- BUILDING LINE
- FENCE LINE
- EDGE OF WATER, STREAM OR DITCH
- EDGE OF WOODS OR BRUSH
- SANITARY SEWER LINE W/MANHOLE & C.O.
- STORM SEWER LINE W/MH & CATCH BASIN
- WATER LINE WHYDRANT, VALVE & VAULT
- ELECTRIC LINE W/PULLBOX, METER & MANHOLE
- NATURAL GAS LINE W/METER & VALVE
- OVERHEAD ELECTRIC, TELEPHONE & CABLE LINE
- UNDERGROUND TELEPHONE LINE
- UNDERGROUND FIBER OPTIC LINE
- HEATING LINE (STEAM)
- TRAFFIC POLE, SIGNAL & TRAFFIC PULLBOX
- TRAFFIC CONTROL LINE
- UTILITY POLE, GUY, LIGHT POLE & TOP MOUNT LIGHT



	MM	DIV	BY	PP/D	AP/D	A. POTTS	A. POTTS
	REVISION	CHK	DR	S. SMITH	DR	D. WIELE	
ADDITION #1	7/27/10	DATE	ISSN				

CH2MHILL

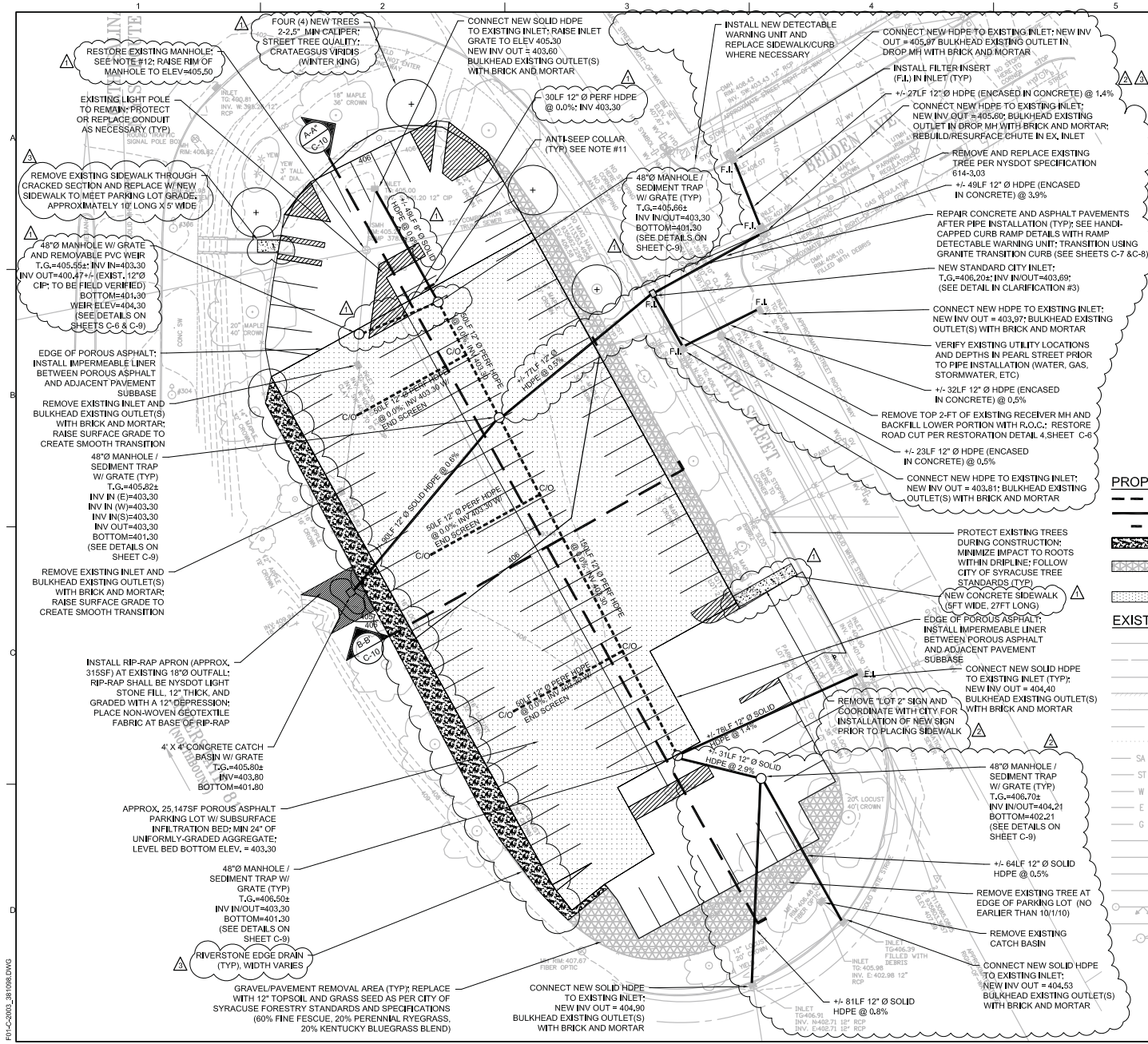
CIVIL

LAYOUT/GRADING PLAN

PEARL STREET PARKING LOT

VERIFY SCALE	
BAR IS ONE INCH ON ORIGINAL DRAWING.	
DATE	JULY 2, 2010
PROJ	381098
DWG	C-03
SHEET	3 OF 12

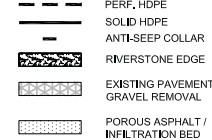
FH-C-2002_381098.DWG



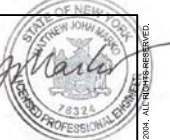
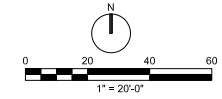
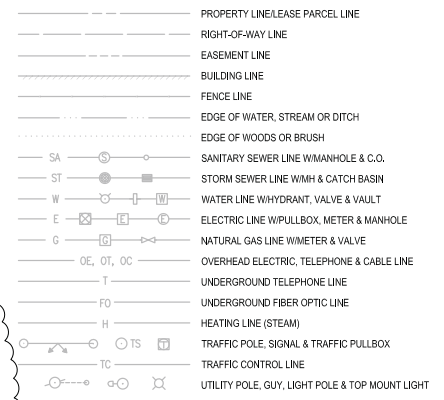
CONSTRUCTION NOTES:

1. VERIFY ALL EXISTING UTILITIES AND OTHER IMPROVEMENTS PRIOR TO START OF WORK AND IMMEDIATELY NOTIFY ENGINEER OF POTENTIAL CONFLICTS WITH PROPOSED WORK.
2. PROVIDE EROSION AND SEDIMENT CONTROL MEASURES AS INDICATED ON THE EROSION AND SEDIMENT CONTROL PLAN AND AS PER THE NEW YORK STATE STANDARDS AND SPECIFICATIONS FOR EROSION AND SEDIMENT CONTROL (AUGUST 2005, OR LATEST EDITION), PROTECT EXISTING SITE FEATURES UNLESS OTHERWISE NOTED. CONSULT ENGINEER PRIOR TO ANY INFILTRATION BED INSTALLATION.
3. PROTECT INFILTRATION BED SUBGRADE FROM SEDIMENT DEPOSITION AND COMPACTION DURING CONSTRUCTION. DO NOT ALLOW CONSTRUCTION VEHICLES TO TREAD ON THE INFILTRATION BED SUBGRADE. SEE SPECIFICATIONS.
4. CONTRACTOR SHALL FOLLOW INFILTRATION BED AND DRAINAGE CONTROL REQUIREMENTS AS SPECIFIED BY ENGINEER.
5. NOTIFY DIG SAFELY NEW YORK AT LEAST 72 HOURS PRIOR TO CONSTRUCTION.
6. REFER TO DETAILS AND PROFILES ON SHEETS C5-C10.
7. CLEANOUTS SHALL BE 6" PVC AS INDICATED ON DETAIL 1/C5.
8. INSTALL FLOOR+ (OR APPROVED EQUAL) FILTER INSERTS IN THE INDICATED PROPOSED OR EXISTING INLETS/CATCH BASINS (AS INDICATED BY AN "F.I." FOR FILTER INSERTS).
9. IMMEDIATELY FOLLOWING CONSTRUCTION, RETURN ALL EXISTING IMPROVEMENTS TO PRE-CONSTRUCTION CONDITIONS.
10. REMOVE ONLY THOSE SECTIONS OF EXISTING FENCING THAT ARE NOTED ON THIS PLAN. FENCING THAT IS REMOVED OR MODIFIED AS PART OF THIS PROJECT SHALL BE REPLACED WITH ROW FENCE WITHOUT TOP RAILING IN ACCORDANCE WITH NYS DOT STANDARD SPECIFICATIONS.
11. INSTALL TWO-PIECE HDPE ANTI-SLEEP COLLAR BY LANE ENTERPRISES, OR APPROVED EQUAL. INSTALL COLLAR ON SOLID HDPE PIPES APPROXIMATELY 1FT FROM EDGE OF THE INFILTRATION BED.
12. EXCAVATE AROUND MANHOLE TO EXPOSE LOWER INCOMING PIPE FROM THE SOUTH (INV +/- 396); REPAIR THIS PIPE CONNECTION AND RECONNECT PIPE TO MANHOLE; ABANDON THE 12"Ø CIP PIPE TO THE NORTH IN PLACE AND BULKHEAD WITH BRICK AND MORTAR AT THE MANHOLE; REPLACE TOP MANHOLE BRICK COURSES DOWN TO SOLID STRUCTURE; REUSE FRAME AND GRATE; CLEAN AND EPOXY ENTIRE MANHOLE PER SPECIFICATIONS
13. PLUG EXISTING OUTLETS, AS NOTED, WITH HYDRAULIC WATER PLUG MATERIAL AS DEFINED IN THE TECHNICAL SPECIFICATIONS
14. ESTABLISH TURF IN AREAS NOTED PER SPECIFICATION SECTION 02250 - ESTABLISHING TURF.
15. PROTECT ALL EXISTING TREES AND VEGETATION PER SPECIFICATION SECTION 02350 - TREE/VEGETATION PROTECTION BARRIER.

PROPOSED LEGEND



EXISTING LEGEND



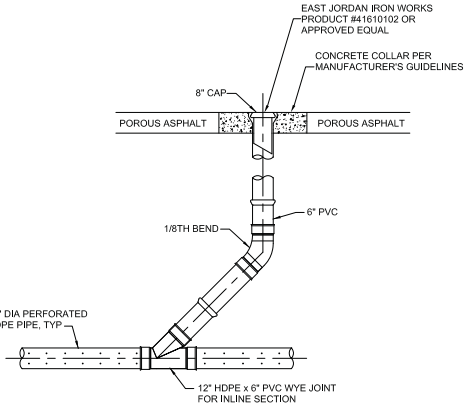
DPW NUM	DPW NUM	DPW NUM	DPW NUM
CONTRACT CLARIFICATION #1	CONTRACT CLARIFICATION #2	CONTRACT CLARIFICATION #3	CONTRACT CLARIFICATION #4
CHANGES MADE BASED ON NYS DOT COMMENTS	REVISION	DATE	BY
3	9/22/10	9/15/10	11/8/10
2	9/15/10	11/8/10	11/8/10
1	11/8/10	11/8/10	11/8/10
NO. / DATE	ISSN	DR	APFO
	D. VENABLE	S. SMITH	M. MARESCO

CH2MHILL
280 ELWOOD HILLS ROAD
SUITE 290
LIVERPOOL, NY 13088

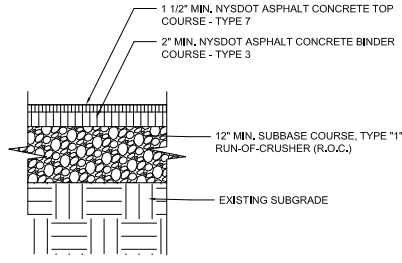
CIVIL
STORMWATER PLAN
PEARL STREET PARKING LOT

VERIFY SCALE	DATE
BAR IS ONE INCH ON ORIGINAL DRAWING.	JULY 2, 2010
	PROJ 381098
	DWG C-04
	SHEET 4 OF 12

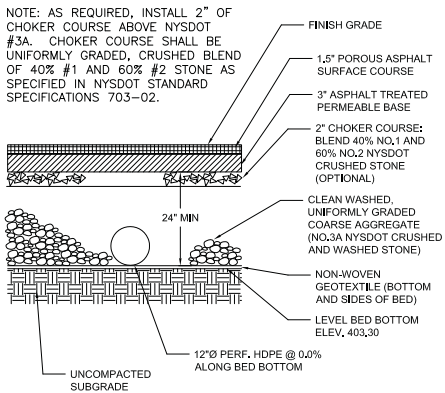
NOTE: AS STATED ON THE PLAN, THE EXISTING BITUMINOUS PAVEMENT AREA OUTSIDE OF THE LIMITS OF THE POROUS ASPHALT / INFILTRATION BED SHALL BE MILLED (MIN 2") AND PAVED WITH STANDARD BITUMINOUS PAVEMENT BINDER AND TOP COURSES. NEW STANDARD BITUMINOUS PAVEMENT BINDER AND TOP COURSES WITH SUBBASE SHALL BE INSTALLED IN THE EXISTING GRAVEL AREA OUTSIDE OF THE POROUS ASPHALT / INFILTRATION BED. SEE EXISTING CONDITIONS PLAN FOR EXTENTS OF EXISTING GRAVEL AND BITUMINOUS PAVEMENT.



1 CLEAN OUT DETAIL
C-05 NTS

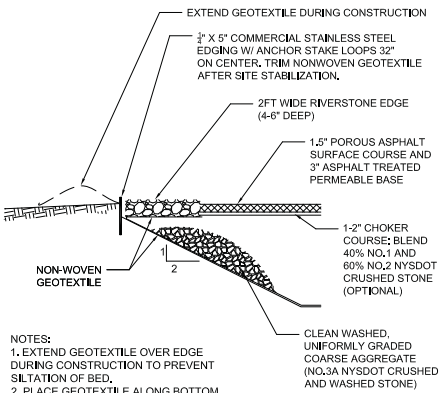


2 STANDARD BITUMINOUS PAVING
C-05 NTS



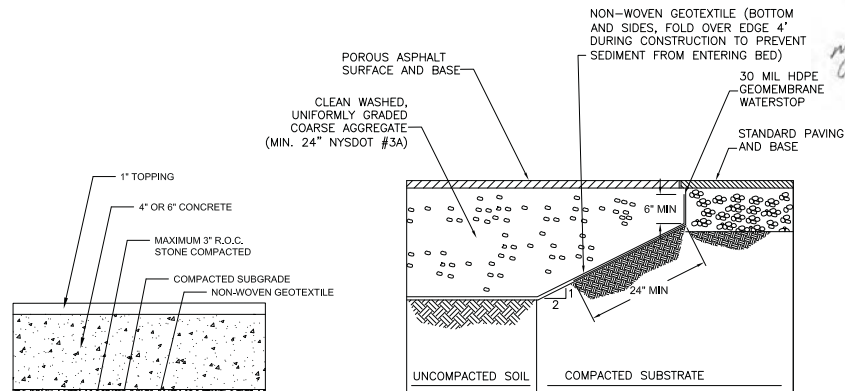
* NOTES:
1. CONTRACTOR SHALL FOLLOW CONTROL REQUIREMENTS AS DESCRIBED IN WRITTEN TECHNICAL SPECIFICATIONS AND AS DIRECTED BY ENGINEER.
2. PLACEMENT OF CLEAN AGGREGATE FOR INFILTRATION BED TO BE APPROVED BY ENGINEER.

5 TYPICAL POROUS ASPHALT BED SECTION
C-05 NTS



NOTES:
1. EXTEND GEOTEXTILE OVER EDGE DURING CONSTRUCTION TO PREVENT SILTATION OF BED.
2. PLACE GEOTEXTILE ALONG BOTTOM SIDES OF AGGREGATE INFILTRATION BED AND UNDER RIVERSTONE EDGE.
3. DO NOT COMPACT OR ALLOW HEAVY EQUIPMENT TO TRAVERSE BED AREA. SEE SPECIFICATIONS.

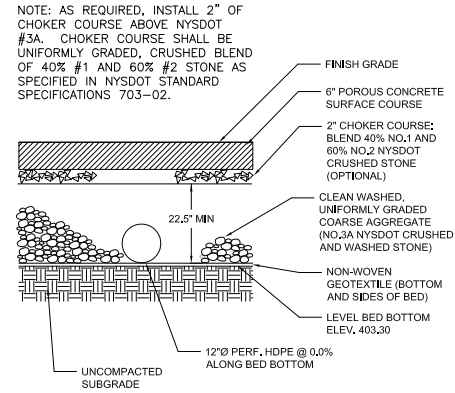
6 TYPICAL POROUS ASPHALT / RIVERSTONE EDGE
C-05 NTS



NOTE: INSTALL 30 MIL HDPE GEOMEMBRANE BETWEEN INFILTRATION AREAS AND ADJACENT PAVEMENT SUBBASE; EXTEND MIN 24" ALONG SIDE SLOPE OF BED AND 6" ALONG VERTICAL EDGE (TOTAL HEIGHT OF GEOMEMBRANE IS 30" MIN); OVERLAP THE GEOMEMBRANE AT THE SEAMS.

4 WATERSTOP BETWEEN INFILTRATION BED AND ADJACENT PAVEMENT SUBBASE
C-05 NTS

3 SIDEWALK & DRIVEWAY RESTORATION DETAIL
C-05 NTS



* NOTES:
1. CONTRACTOR SHALL FOLLOW CONTROL REQUIREMENTS AS DESCRIBED IN WRITTEN TECHNICAL SPECIFICATIONS AND AS DIRECTED BY ENGINEER.
2. PLACEMENT OF CLEAN AGGREGATE FOR INFILTRATION BED TO BE APPROVED BY ENGINEER.

7 TYPICAL POROUS CONCRETE BED SECTION (BID ALTERNATE #1)
C-05 NTS

NOTE: IT IS A VIOLATION OF THE NEW YORK STATE EDUCATION LAW FOR ANY PERSON TO ALTER THIS DOCUMENT IN ANY WAY, UNLESS ACTING UNDER THE DIRECTION OF A LICENSED PROFESSIONAL ENGINEER. IF A DOCUMENT BEARING THE SEAL OF AN ENGINEER IS ALTERED, THE ALTERING ENGINEER SHALL AFFIX TO THE DOCUMENT THEIR SEAL AND THE NOTATION "ALTERED BY" FOLLOWED BY THEIR SIGNATURE AND THE DATE OF SUCH ALTERATION, AND A SPECIFIC DESCRIPTION OF THE ALTERATION.

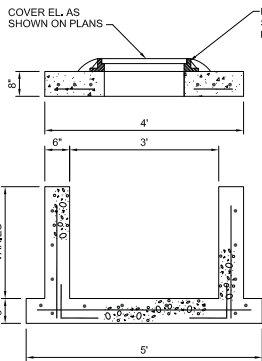


NO.	DATE	DESCRIPTION	BY
1	08/20/10	REVISION	DR
2	08/20/10	DR	DR
3	08/20/10	DR	DR
4	08/20/10	DR	DR
5	08/20/10	DR	DR
6	08/20/10	DR	DR
7	08/20/10	DR	DR
8	08/20/10	DR	DR
9	08/20/10	DR	DR
10	08/20/10	DR	DR

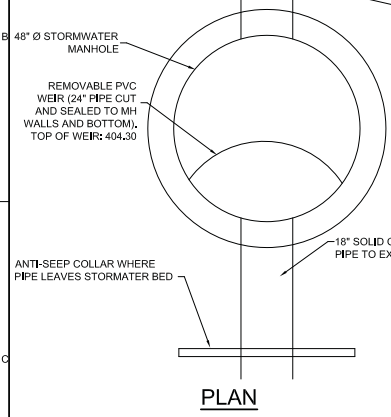
NO.	DATE	DESCRIPTION	BY
1	08/20/10	REVISION	DR
2	08/20/10	DR	DR
3	08/20/10	DR	DR
4	08/20/10	DR	DR
5	08/20/10	DR	DR
6	08/20/10	DR	DR
7	08/20/10	DR	DR
8	08/20/10	DR	DR
9	08/20/10	DR	DR
10	08/20/10	DR	DR

CH2MHILL
CIVIL
280 ELWOOD DAMS ROAD
SUITE 200
LIVERPOOL, NY 13088

VERIFY SCALE	DATE	JULY 2, 2010
BAR IS ONE INCH ON ORIGINAL DRAWING.	PROJ	381098
	DWG	C-05
	SHEET	5 OF 12

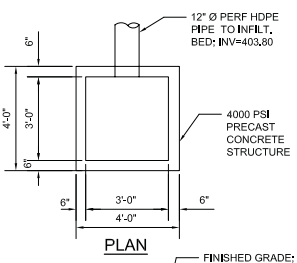


SECTION

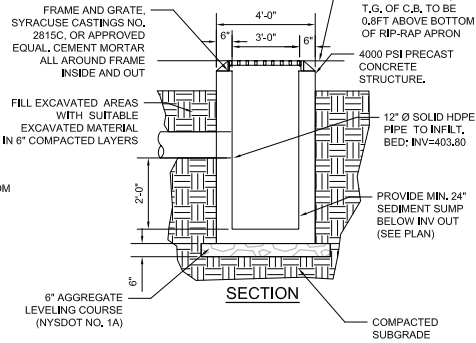


PLAN

NOTE:
 1. THIS DETAIL PERTAINS TO THE CATCH BASIN AT THE OUTFALL OF 181
 2. DRILL EIGHT 1" WEEP HOLES AT THE BOTTOM OF THE STRUCTURE

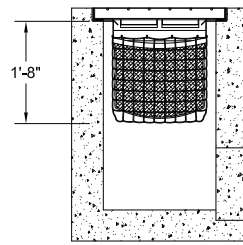
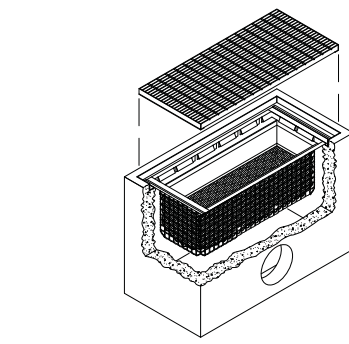


PLAN



SECTION

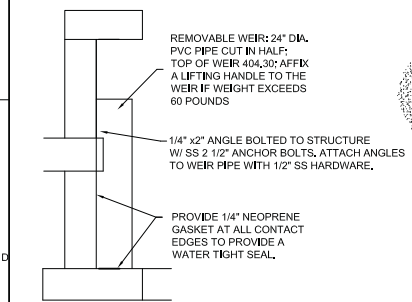
2 CONCRETE CATCH BASIN
 C-06 NTS



SIDE

NOTES:
 1. INLET FILTER INSERT SHALL BE FLOGRAD PLUS BY KRISTAR, OR APPROVED EQUAL.
 2. INSTALL FILTER INSERT IN INLETS SHOWN ON PLAN.

3 INLET FILTER INSERT DETAIL
 C-06

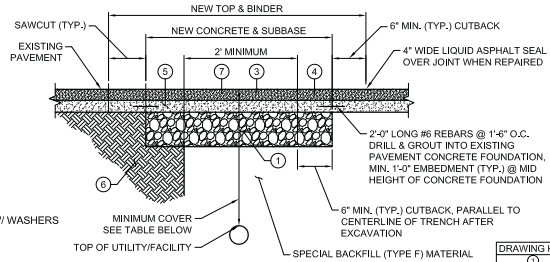


PLAN

ELEVATION
 NTS

WEIR DETAILS

NOTES:
 1. SEE CITY STANDARD MANHOLE DETAILS ON SHEET C-4
 2. ALL MANHOLES SHALL HAVE A 24" MIN SUMP FOR SEDIMENT DEPOSITION BELOW THE LOWEST INVERT
 3. ALL MANHOLES SHALL HAVE ADA COMPLIANT OPEN GRATES
 4. GASKET MATERIAL FOR WEIR SHALL BE NEOPRENE RUBBER, 1/4" THICK AT MANHOLE WALL, 3/4" THICK BETWEEN PIPE AND ANGLE, ALL WITH A DIAMETER OF 40 OR 50



TYPICAL MINIMUM COVER:	
3'-0"	GAS, ELECTRIC, CABLE, TV, TELECOMMUNICATIONS
5'-0"	WATER
3' OR AS DIRECTED BY CITY'S ENGINEER	ALL OTHERS

NOTES:

- REFER TO CITY OF SYRACUSE STANDARD SPECIFICATIONS OR DETAILS. THE MINIMUM THICKNESS OF EACH LAYER OF BINDER, TOP, SUBBASE AND CONCRETE BASE SHALL MATCH THOSE SHOWN ON STANDARD DETAILS OR MATCH EXISTING WHERE EXISTING CONDITIONS EXCEED MINIMUMS.
- IN NO CASE SHALL THE TOP OF CONCRETE BASE BE HIGHER THAN THAT OF THE SURROUNDING EXISTING CONCRETE.
- IF PAVEMENT MARKINGS OR SIGNAL LOOPS ARE DISTURBED OR DESTROYED THEY SHALL BE REPLACED IN ACCORDANCE WITH CITY OF SYRACUSE STANDARDS.
- MATCH EXISTING PAVEMENT SLOPE.
- IF, IN THE OPINION OF THE CONTRACTOR, THE EXISTING CONCRETE FOUNDATION IS IN POOR CONDITION, THE ENGINEER SHALL BE CONTACTED FOR PRIOR APPROVAL TO ELIMINATE DOWELS.


4 TYPICAL PIPE TRENCHING / ROAD RESTORATION DETAIL
 C-06 NTS

PRIVATE UTILITY STREET CUT REPAIR
 NTS

- WHEN 30% OR MORE OF THE PAVEMENT IS EXCAVATED BY PRIVATE UTILITY WORK, THE CITY, AT ITS DISCRETION, MAY REQUIRE RECONSTRUCTION FROM THE CENTER LINE TO THE EDGE/CURB OF THE ENTIRE SECTION.
- WHEN 60% OR MORE OF THE PAVEMENT LANE AREA IS EXCAVATED BY PRIVATE UTILITY THE ENTIRE AREA FROM THE CENTER LINE OF THE PAVEMENT TO THE CURB MUST BE RECONSTRUCTED.
- IF ANY PAVEMENT DISTURBANCE OCCURS WITHIN 2 FEET OF THE EDGE/CURB, PAVEMENT RECONSTRUCTION MUST BE COMPLETED TO THE EDGE/CURB.
- IN AREAS WHERE TRENCH WIDTH VARIES THE PERCENTAGES SHALL BE DETERMINED PER 100 LINEAR FEET ALONG CENTER LINE OF THE STREET. IN INTERSECTIONS THE AREA WILL BE PER QUADRANT OF THE INTERSECTION.
- EXISTING PAVEMENT IS TO BE SAWCUT FULL DEPTH TO OBTAIN A STRAIGHT AND NEAT EDGE FOR PAVING. SAWCUT IS TO BE MADE AFTER BACKFILLING THE TRENCH TO THE BOTTOM OF NEW PAVEMENT SECTION.

DRAWING KEY	DESCRIPTION
○	SUBBASE COURSE, TYPE "1" RUN-OF-CRUSHER (12")
○	ASPHALT CONCRETE - TYPE 3 BINDER COURSE (ONE - 1-1/2" LIFT)
○	ASPHALT CONCRETE - TYPE 7FM TOP COURSE (ONE - 1-1/2" LIFT)
○	FIBER-REINFORCED PORTLAND CEMENT CONCRETE - 3,500 PSI (6")
○	COMPACTED SUBGRADE
○	ASPHALT TACK COAT

NOTE: IT IS A VIOLATION OF THE NEW YORK STATE EDUCATION LAW FOR ANY PERSON TO ALTER THIS DOCUMENT IN ANY WAY, UNLESS ACTING UNDER THE DIRECTION OF A LICENSED PROFESSIONAL ENGINEER, IF A DOCUMENT BEARING THE SEAL OF AN ENGINEER IS ALTERED, THE ALTERING ENGINEER SHALL AFFIX TO THE DOCUMENT THEIR SEAL AND THE NOTATION "ALTERED BY" FOLLOWED BY THEIR SIGNATURE AND THE DATE OF SUCH ALTERATION, AND A SPECIFIC DESCRIPTION OF THE ALTERATION.



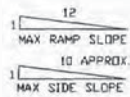
NO.	DATE	DESCRIPTION	BY	APPROVED BY

NO.	DATE	DESCRIPTION	BY	APPROVED BY

CH2M HILL CIVIL 280 ELWOOD DAMS ROAD SUITE 200 LIVERPOOL, NY 13088	DETAILS SHEET 2 OF 5 PEARL STREET PARKING LOT
--	--

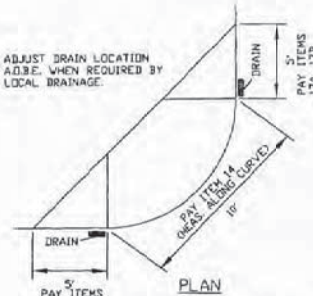
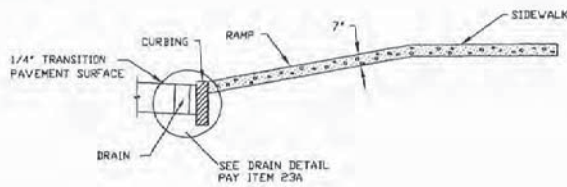
VERIFY SCALE BAR IS ONE INCH ON ORIGINAL DRAWING.	DATE: JULY 2, 2010 PROJ: 381098 DWG: C-06 SHEET: 6 OF 12
--	---

NOTE: Must meet Americans with Disabilities Act of 1991 Rules & Regulations



STANDARD SIDEWALK CROSS SLOPE
1/4" PER FT. MIN.
Max. Cross Slope 2% per ADA
1/4" PER FT. MAX.

ADJUST DRAIN LOCATION
ADJBE. WHEN REQUIRED BY
LOCAL DRAINAGE

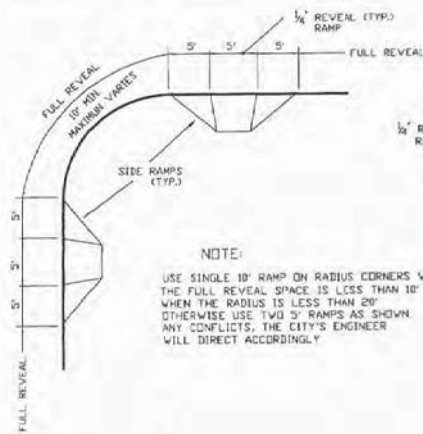


TYPICAL DRAIN 10' WIDE RAMP

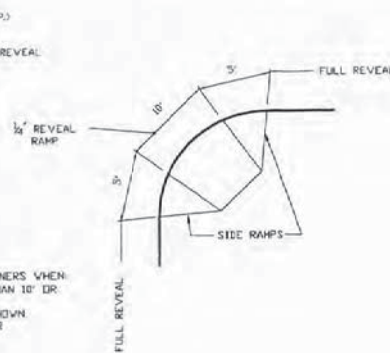
SEE DRAIN DETAIL
PAY ITEM 23A

- USE 10' RAMPS ON CORNERS WHEN:
- 1) THE CORNER RADIUS IS 20' OR LESS OR
 - 2) IF FULL REVEAL DISTANCE OF CURB IS LESS THAN 10'.
 - 3) CONCRETE WILL BE 7' FROM TANGENT POINT TO TANGENT POINT.

2 RAMPS ON CORNER RADIUS
5' RAMP WITH SINGLE CROSSWALK

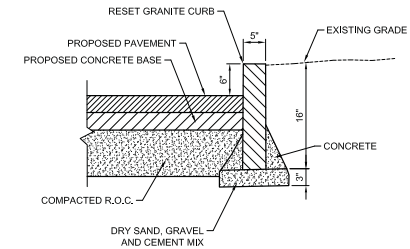


1 RAMP ON CORNER RADIUS
10' RAMP WITH MULTIPLE CROSSWALKS



NOTE:
USE SINGLE 10' RAMP ON RADIUS CORNERS WHEN THE FULL REVEAL SPACE IS LESS THAN 10' OR WHEN THE RADIUS IS LESS THAN 20'. OTHERWISE USE TWO 5' RAMPS AS SHOWN. ANY CONFLICTS, THE CITY'S ENGINEER WILL DIRECT ACCORDINGLY.

NOTE: IT IS A VIOLATION OF THE NEW YORK STATE EDUCATION LAW FOR ANY PERSON TO ALTER THIS DOCUMENT IN ANY WAY, UNLESS ACTING UNDER THE DIRECTION OF A LICENSED PROFESSIONAL ENGINEER. IF A DOCUMENT BEARING THE SEAL OF AN ENGINEER IS ALTERED, THE ALTERING ENGINEER SHALL AFFIX TO THE DOCUMENT THEIR SEAL AND THE NOTATION "ALTERED BY" FOLLOWED BY THEIR SIGNATURE AND THE DATE OF SUCH ALTERATION, AND A SPECIFIC DESCRIPTION OF THE ALTERATION.



NOTE:
WHERE MEDIAN OR CONCRETE CURB IS ENCOUNTERED DURING TRENCH EXCAVATION, THE CURB SHALL BE REMOVED AND REPLACED WITH GRANITE CURB.

1 GRANITE CURB DETAIL
C-07 NTS

NO.	DATE	DESCRIPTION	BY
C-07	NTS	REVISION	APPROVED BY
		DR	APPROVED BY
		DR	APPROVED BY
		DR	APPROVED BY

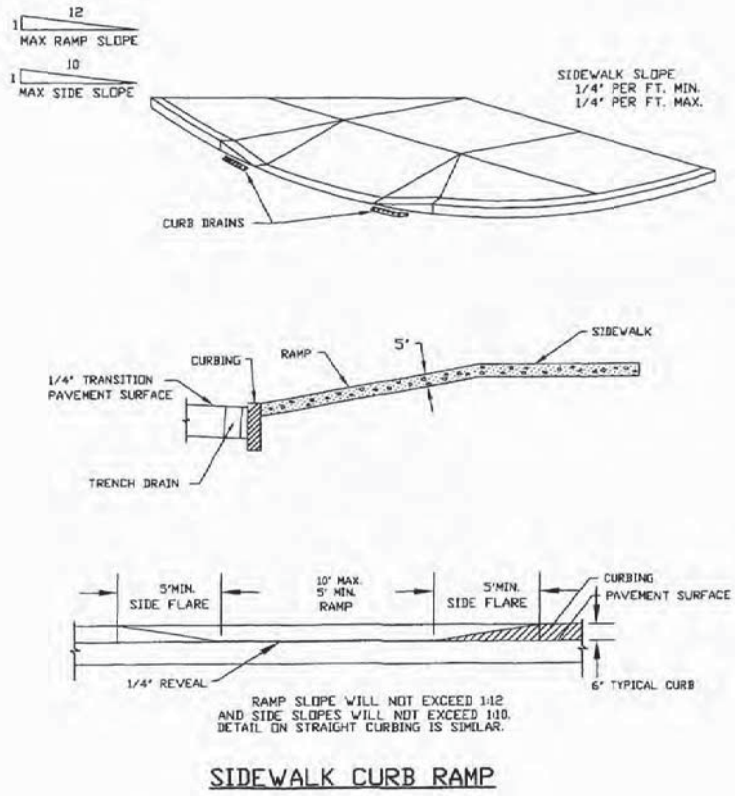
NO.	DATE	DESCRIPTION	BY
C-07	NTS	REVISION	APPROVED BY
		DR	APPROVED BY
		DR	APPROVED BY
		DR	APPROVED BY

CH2M HILL	CIVIL
280 ELWOOD DAMS ROAD	
SUITE 200	
LIVERPOOL, NY 13088	
DETAILS SHEET 3 OF 5	
PEARL STREET PARKING LOT	

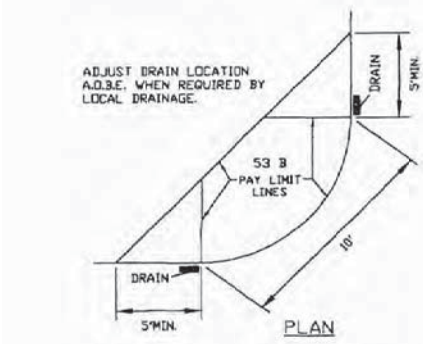
VERIFY SCALE	
BAR IS ONE INCH ON ORIGINAL DRAWING	
DATE	JULY 2, 2010
PROJ	381098
DWG	C-07
SHEET	7 OF 12

FD-C-0001_301006.DWG

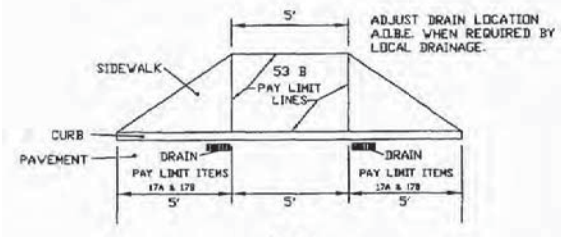
REUSE OF DOCUMENTS: THIS DOCUMENT AND THE REVISIONS INCORPORATED HEREIN AS AN INSTRUMENT OF PROFESSIONAL SERVICE IS THE PROPERTY OF CH2MHILL AND IS NOT TO BE USED IN WHOLE OR IN PART FOR ANY OTHER PROJECT WITHOUT THE WRITTEN AUTHORIZATION OF CH2MHILL. ©2010 CH2MHILL. ALL RIGHTS RESERVED.



- NOTES
- 1) CONCRETE SIDEWALK CURB RAMP TO BE INSTALLED ACCORDING TO PAYMENT ITEM #52.
 - 2) DRAIN - PAY ITEM 23A.



TYPICAL DRAIN 10' WIDE RAMP



TYPICAL DRAIN 5' WIDE RAMP

NOTE: Must meet Americans with Disabilities Act of 1991 Rules and Regulations

NOTE: IT IS A VIOLATION OF THE NEW YORK STATE EDUCATION LAW FOR ANY PERSON TO ALTER THIS DOCUMENT IN ANY WAY, UNLESS ACTING UNDER THE DIRECTION OF A LICENSED PROFESSIONAL ENGINEER, IF A DOCUMENT BEARING THE SEAL OF AN ENGINEER IS ALTERED, THE ALTERING ENGINEER SHALL AFFIX TO THE DOCUMENT THEIR SEAL AND THE NOTATION "ALTERED BY" FOLLOWED BY THEIR SIGNATURE AND THE DATE OF SUCH ALTERATION, AND A SPECIFIC DESCRIPTION OF THE ALTERATION.

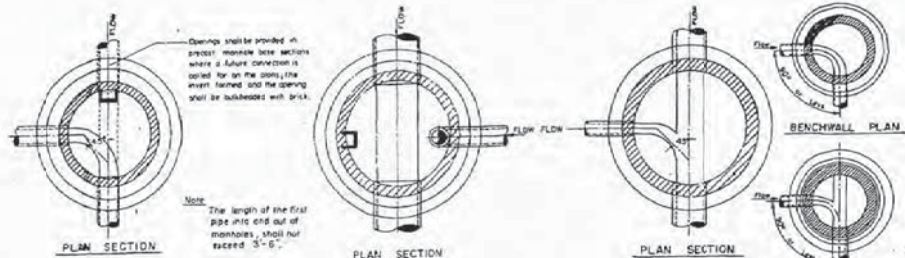


NO.	DATE	DESCRIPTION	BY	APPROVED BY
1	05/08/08	ISSUE FOR PERMITS	D. WIBLE	A. POTTS
2	07/02/10	REVISION	S. SMITH	D. WIBLE
3				
4				
5				
6				

CH2M	280 ELWOOD DAMS ROAD	LIVERPOOL, NY 13088
CIVIL	SUITE 200	

CH2MHILL
 CIVIL
 DETAILS SHEET 4 OF 5
 PEARL STREET PARKING LOT

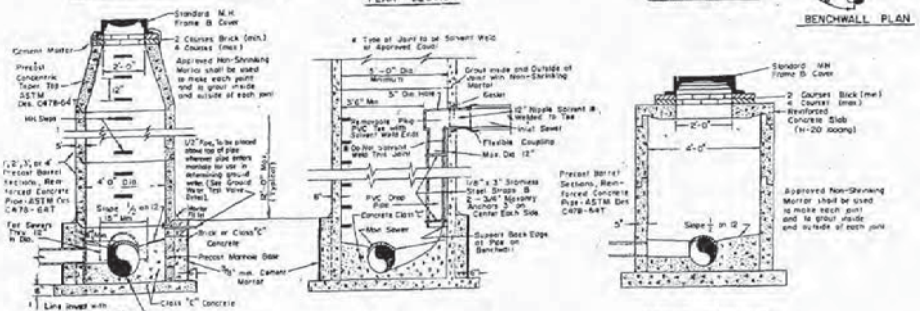
VERIFY SCALE	BAR IS ONE INCH ON ORIGINAL DRAWING.
DATE	JULY 2, 2010
PROJ	381098
DWG	C-08
SHEET	8 OF 12



NOTES PERTAINING TO MANHOLES:

- UNLESS OTHERWISE SPECIFIED, STANDARD MANHOLE FRAMES AND COVERS SHALL BE SYRACUSE CASTING SALES CORPORATION, PATTERN NO. 12558, OR NEENAH FOUNDRY CO. NO. NF 25139 OR EQUAL. ALL MANHOLES SHALL HAVE ADA COMPLIANT OPEN GRATES.
- STANDARD MANHOLE STEPS SHALL BE SYRACUSE CASTING SALES CORP. PATTERN NO. 2592-1 OR NEENAH FOUNDRY CO. NO. R-1982-T OR EQUAL. THE METHOD OF ATTACHING MANHOLE STEPS TO THE PRECAST SECTIONS IS SUBJECT TO APPROVAL BY THE ENGINEER.
- SOLID CONCRETE BLOCK OF APPROVED DESIGN MAY BE SUBSTITUTED FOR BRICK.
- WHERE PRECAST MANHOLE SECTIONS ARE USED, SELF CONTAINED RUBBER GASKETS MAY BE SUBSTITUTED FOR MORTAR JOINTS.
- CONTRACTOR SHALL CONSTRUCT, AT NO EXTRA COST, MANHOLES WITH FLAT SLAB COVERS OF APPROVED DESIGN, WHERE THE MANHOLE DEPTH IS INSUFFICIENT TO PERMIT INSTALLATION OF THE TAPER TOP.
- ALL MANHOLES SHALL HAVE A 24" MINIMUM SUMP FOR SEDIMENT DEPOSITION BELOW THE LOWEST INVERT.

NOTE: IT IS A VIOLATION OF THE NEW YORK STATE EDUCATION LAW FOR ANY PERSON TO ALTER THIS DOCUMENT IN ANY WAY, UNLESS ACTING UNDER THE DIRECTION OF A LICENSED PROFESSIONAL ENGINEER. IF A DOCUMENT BEARING THE SEAL OF AN ENGINEER IS ALTERED, THE ALTERING ENGINEER SHALL AFFIX TO THE DOCUMENT THEIR SEAL AND THE NOTATION "ALTERED BY" FOLLOWED BY THEIR SIGNATURE AND THE DATE OF SUCH ALTERATION, AND A SPECIFIC DESCRIPTION OF THE ALTERATION.



DROP MANHOLE

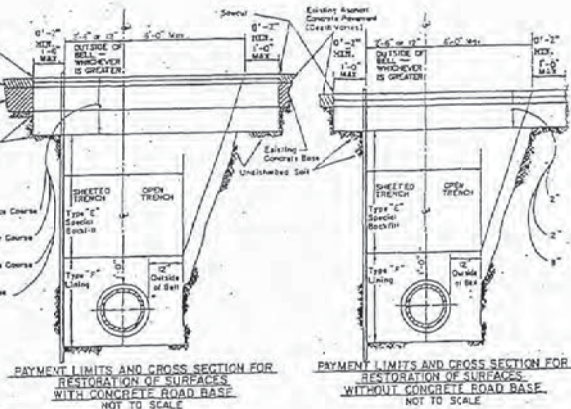
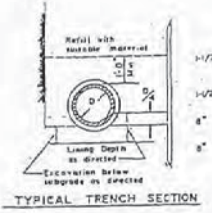
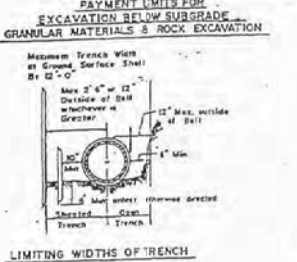
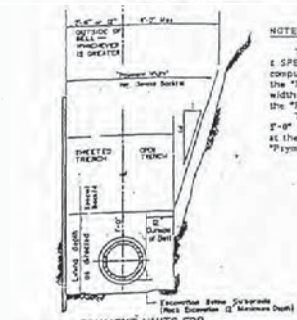
USE DROP MANHOLE WHEN DIFFERENCE IN ELEVATION BETWEEN SEWER IN MAIN SEWER EXCEEDS INCHES

DROP SECTION DIMENSIONS	
LAYER	SEWER DIA. OR DROP DIA. OR
1"	8"
10"	10"
12"	12"
14"	14"
16"	16"
18"	18"
20"	20"

NOTE:

The quantity of EXCAVATION BELOW SUBGRADE Lining, & SPECIAL BACKFILL for which payment will be made will be computed by using the product of the depth, as directed, and the "Payment Width" as shown on this detail unless the actual width is less, in which case the actual width shall be considered the "Payment Width" for purposes of computations.

The maximum "Payment Width" in sheeted trenches shall be 8'-0" or the sum of the outside diameter of the pipe as measured at the bell plus 2'-0", whichever is greater. The maximum "Payment Width" in open trenches shall not exceed 12'-0".

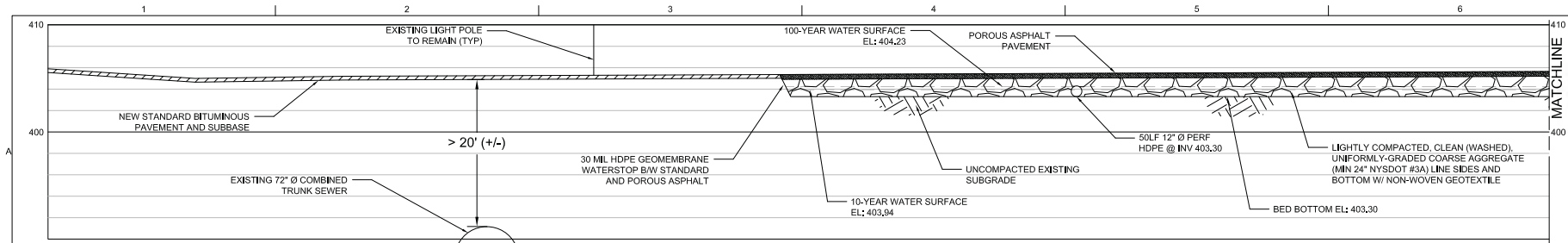


DETAILS FOR PAYMENT ITEMS 213,213A, - ETC.

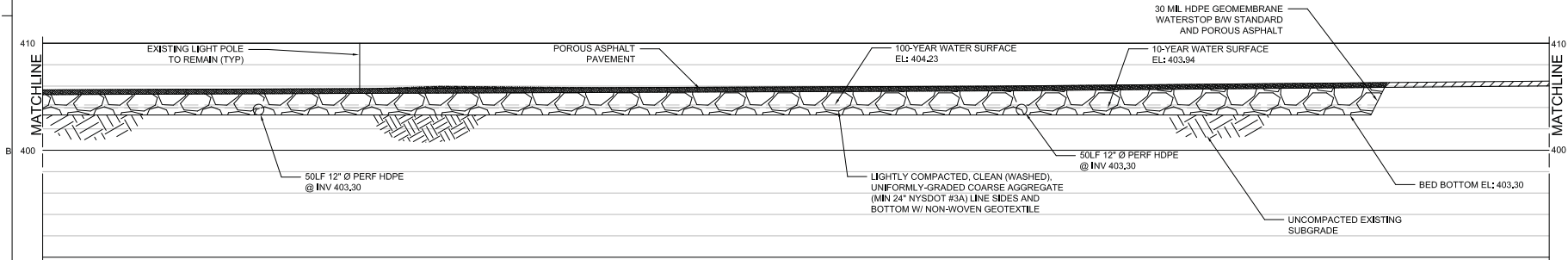
NO.	DATE	DESCRIPTION	BY	APPROVED BY
103	DATE	REVISION	BT	APPROVED BY
ISSN	DATE	DR	APPROVED BY	APPROVED BY
		D. WIBLE	S. SMITH	A. POTTS

CH2M HILL
 CIVIL
 280 ELWOOD DAMS ROAD
 SUITE 200
 LIVERPOOL, NY 13088

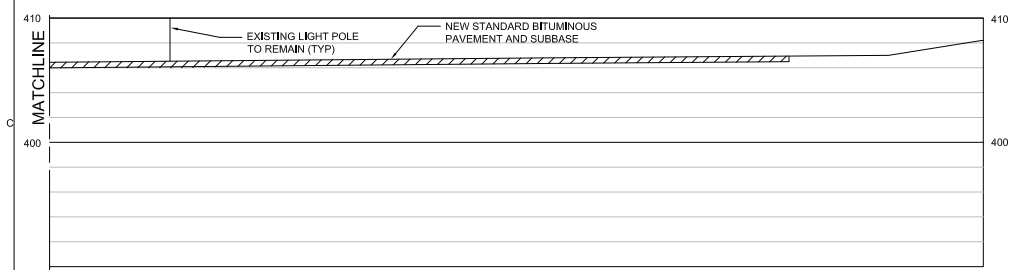
VERIFY SCALE
 BAR IS ONE INCH ON ORIGINAL DRAWING.
 DATE JULY 2, 2010
 PROJ 381098
 DWG C-09
 SHEET 9 OF 12



SECTION A-A'



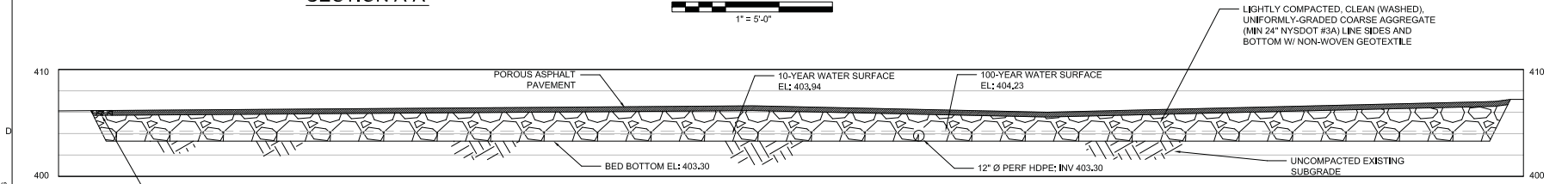
SECTION A-A'



SECTION A-A'

NOTE: IF ANY SURFACE GRADING AND/OR DIMENSION DISCREPANCIES EXIST BETWEEN THESE SECTIONS AND SHEET C3: LAYOUT AND GRADING PLAN, DEFER TO SHEET C3

NOTE: IT IS A VIOLATION OF THE NEW YORK STATE EDUCATION LAW FOR ANY PERSON TO ALTER THIS DOCUMENT IN ANY WAY, UNLESS ACTING UNDER THE DIRECTION OF A LICENSED PROFESSIONAL ENGINEER. IF A DOCUMENT BEARING THE SEAL OF AN ENGINEER IS ALTERED, THE ALTERING ENGINEER SHALL AFFIX TO THE DOCUMENT THEIR SEAL AND THE NOTATION "ALTERED BY" FOLLOWED BY THEIR SIGNATURE AND THE DATE OF SUCH ALTERATION, AND A SPECIFIC DESCRIPTION OF THE ALTERATION.



SECTION B-B'



NO.	DATE	DESCRIPTION	BY
1		ISSN	D. VIEBLE
2		DR	S. SMITH
3		CHK	A. POTTS
4		APPROVED BY	
5		APPROVED BY	
6		APPROVED BY	

CH2M HILL 280 ELWOOD DAMS ROAD SUITE 200 LIVERPOOL, NY 13088

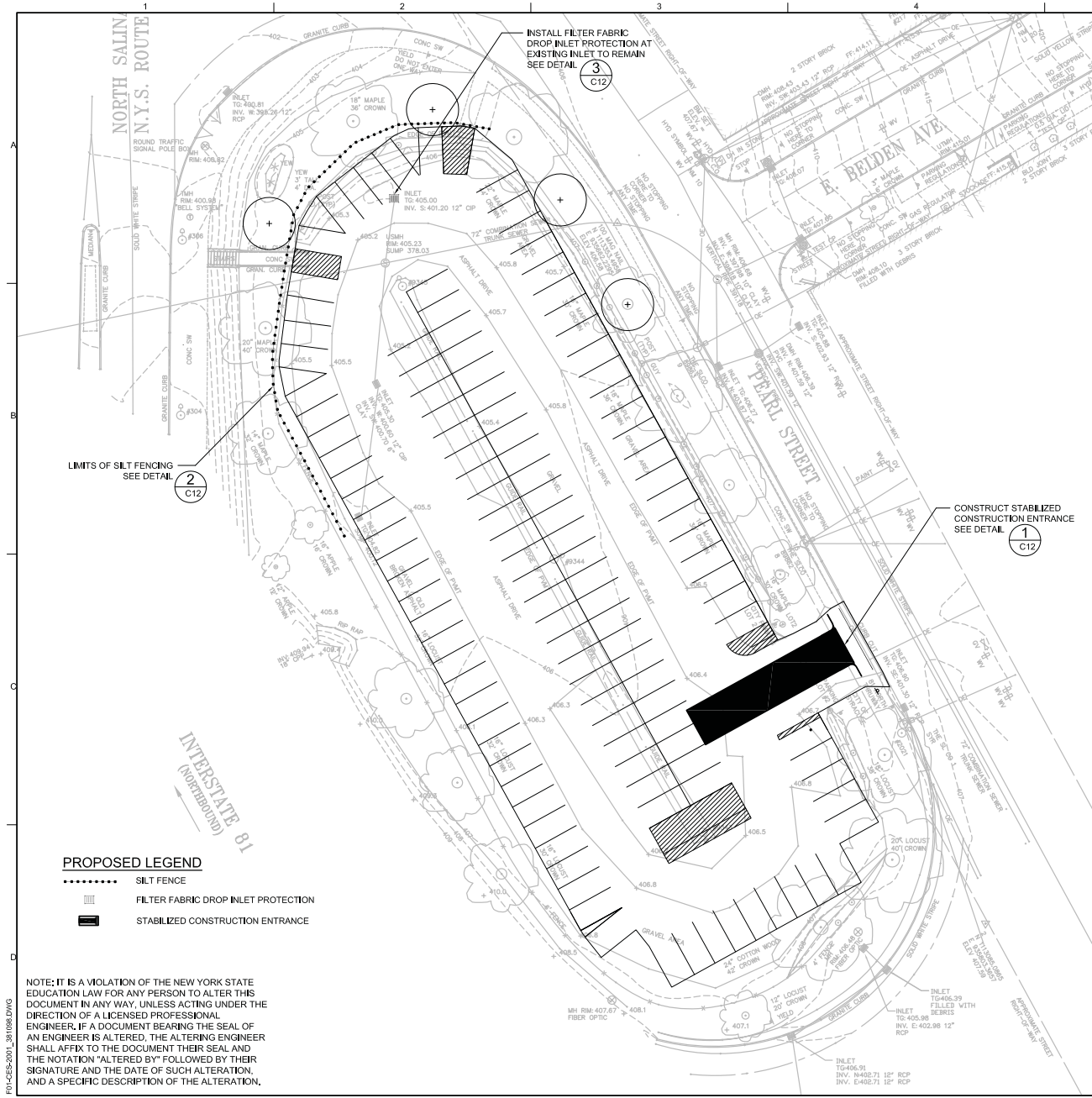
CH2M HILL
CIVIL SECTIONS

VERIFY SCALE	DATE	JULY 2, 2010
BAR IS ONE INCH ON ORIGINAL DRAWING.	PROJ	381098
	DWG	C-10
	SHEET	10 OF 12

FD-C-0001_381098.DWG

ISSUED FOR BIDDING AND CONSTRUCTION

© CH2M HILL 2004. ALL RIGHTS RESERVED.



EROSION AND SEDIMENT CONTROL NOTES:

1. PROVIDE EROSION AND SEDIMENT CONTROL MEASURES WHERE AND WHEN APPROPRIATE AS PER THE NEW YORK STATE STANDARDS AND SPECIFICATIONS FOR EROSION AND SEDIMENT CONTROL (AUGUST 2005, OR LATEST EDITION). PROTECT EXISTING SITE FEATURES UNLESS OTHERWISE NOTED. CONSULT ENGINEER PRIOR TO INFILTRATION BED INSTALLATION.
2. PROTECT INFILTRATION BED SUBGRADE FROM SEDIMENT DEPOSITION AND/OR COMPACTION DURING CONSTRUCTION. DO NOT ALLOW CONSTRUCTION VEHICLES TO TREAD ON THE INFILTRATION BED SUBGRADE.
3. NOTIFY DIG SAFELY NEW YORK AT LEAST 72 HOURS PRIOR TO CONSTRUCTION.
4. REFER TO DETAILS ON SHEET C12.
5. IMMEDIATELY FOLLOWING CONSTRUCTION, RETURN ALL EXISTING IMPROVEMENTS TO PRE-CONSTRUCTION CONDITIONS.
6. CONTRACTOR SHALL WORK TO MINIMIZE EXCESS SOIL GENERATED. ALL EXCESS SOIL MATERIAL SHALL BE DISPOSED OF AT A PERMITTED DISPOSAL FACILITY. PROVIDE THE NAME OF THE DISPOSAL FACILITY AND SOIL SAMPLE RESULTS 7 DAYS PRIOR TO HAULING SOIL. COPIES OF ALL BILLS-OF-LADING SHALL BE PROVIDED TO THE ENGINEER WITHIN 24 HOURS OF SOIL LEAVING THE SITE.
7. CONTRACTOR SHALL PROTECT ALL EXISTING LIGHTPOLES DURING CONSTRUCTION ACTIVITIES AND SHALL REPAIR ANY DAMAGE TO LIGHTPOLES IN A MANNER APPROVED BY THE ENGINEER, AT NO ADDITIONAL COST TO THE OWNER.

SEQUENCE OF CONSTRUCTION:

1. FURNISH AND INSTALL ALL SOIL EROSION AND SEDIMENT CONTROL DEVICES PRIOR TO DISTURBANCE OF ANY SOIL.
2. REMOVE GUIDE RAIL AND EXCAVATE INFILTRATION BED AREA, TAKING CARE NOT TO RUN CONSTRUCTION VEHICLES OVER INFILTRATION BED SUBGRADE. DO NOT COMPACT SUBGRADE.
3. INSTALL GEOTEXTILE, AGGREGATE, PERFORATED PIPE, AND ASSOCIATED STRUCTURES WITHIN INFILTRATION BED.
4. INSTALL PIPE CONNECTIONS FROM EXISTING INLETS, NEW CATCH BASINS, RIP-RAP DEPRESSION, AND FILTER INSERTS IN INDICATED EXISTING INLETS. REPAIR CONCRETE AND ASPHALT PAVEMENTS AFTER PIPE INSTALLATION.
5. REMOVE EXISTING ASPHALT/GRAVEL PAVEMENT OUTSIDE OF INFILTRATION BED AREA, AND INSTALL WITH LAWN AND/OR SHRUBS OR STANDARD BITUMINOUS PAVEMENT.
6. REMOVE EXISTING INDICATED INLETS AND PLUG EXISTING STORM PIPES. REMOVE AND REPLACE FENCING.
7. INSTALL STANDARD BITUMINOUS PAVEMENT.
8. INSTALL POROUS BITUMINOUS PAVEMENT AS PER SPECIFICATIONS.
9. INSTALL RIVERSTONE EDGE DRAINS, WHEEL STOPS, STOP SIGN, ETC.
10. APPLY PARKING STALL PAINT.
11. REMOVE ALL SOIL EROSION AND SEDIMENT CONTROL DEVICES UPON COMPLETION OF PROJECT AND STABILIZATION.
12. KEEP TRAFFIC OFF OF POROUS PAVEMENT FOR A MINIMUM OF ONE WEEK.

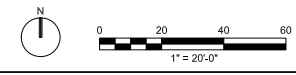
EXISTING LEGEND

	PROPERTY LINE/EASEL PARCEL LINE
	RIGHT-OF-WAY LINE
	EASEMENT LINE
	BUILDING LINE
	FENCE LINE
	EDGE OF WATER, STREAM OR DITCH
	EDGE OF WOODS OR BRUSH
	SANITARY SEWER LINE W/ MANHOLE & C.O.
	STORM SEWER LINE W/ MH & CATCH BASIN
	WATER LINE W/ HYDRANT, VALVE & VAULT
	ELECTRIC LINE W/ PULLBOX, METER & MANHOLE
	NATURAL GAS LINE W/ METER & VALVE
	OVERHEAD ELECTRIC, TELEPHONE & CABLE LINE
	UNDERGROUND TELEPHONE LINE
	UNDERGROUND FIBER OPTIC LINE
	HEATING LINE (STEAM)
	TRAFFIC POLE, SIGNAL & TRAFFIC PULLBOX
	TRAFFIC CONTROL LINE
	UTILITY POLE, GUY, LIGHT POLE & TOP MOUNT LIGHT

PROPOSED LEGEND

	SILT FENCE
	FILTER FABRIC DROP INLET PROTECTION
	STABILIZED CONSTRUCTION ENTRANCE

NOTE: IT IS A VIOLATION OF THE NEW YORK STATE EDUCATION LAW FOR ANY PERSON TO ALTER THIS DOCUMENT IN ANY WAY, UNLESS ACTING UNDER THE DIRECTION OF A LICENSED PROFESSIONAL ENGINEER. IF A DOCUMENT BEARING THE SEAL OF AN ENGINEER IS ALTERED, THE ALTERING ENGINEER SHALL AFFIX TO THE DOCUMENT THEIR SEAL AND THE NOTATION "ALTERED BY" FOLLOWED BY THEIR SIGNATURE AND THE DATE OF SUCH ALTERATION, AND A SPECIFIC DESCRIPTION OF THE ALTERATION.



NO. DATE	DESCRIPTION	BY	DATE
001	REVISION	S. SMITH	08/20/10
002	ISSN	D. WIELE	08/20/10

CH2M HILL
 CIVIL
 280 ELWOOD DAMS ROAD
 SUITE 200
 LIVERPOOL, NY 13088

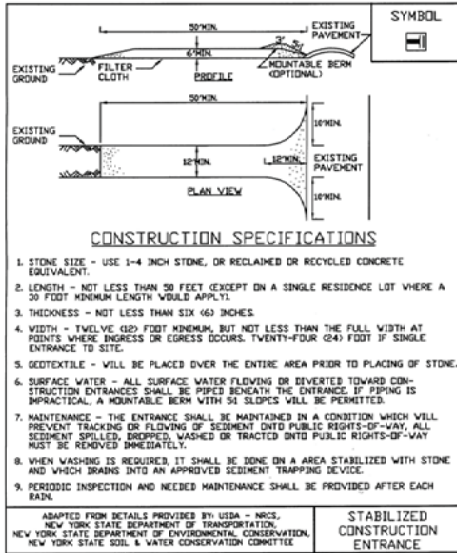
EROSION & SEDIMENT CONTROL PLAN
PEARL STREET PARKING LOT

VERIFY SCALE
 BAR IS ONE INCH ON ORIGINAL DRAWING.

DATE	JULY 2, 2010
PROJ	381098
DWG	C-11
SHEET	11 OF 12

REUSE OF DOCUMENTS: THIS DOCUMENT AND THE DESIGN AND DESIGN INFORMATION INCORPORATED HEREIN IS THE PROPERTY OF CH2MHILL AND IS NOT TO BE USED IN WHOLE OR IN PART FOR ANY OTHER PROJECT WITHOUT THE WRITTEN AUTHORIZATION OF CH2MHILL. © CH2MHILL 2008. ALL RIGHTS RESERVED.

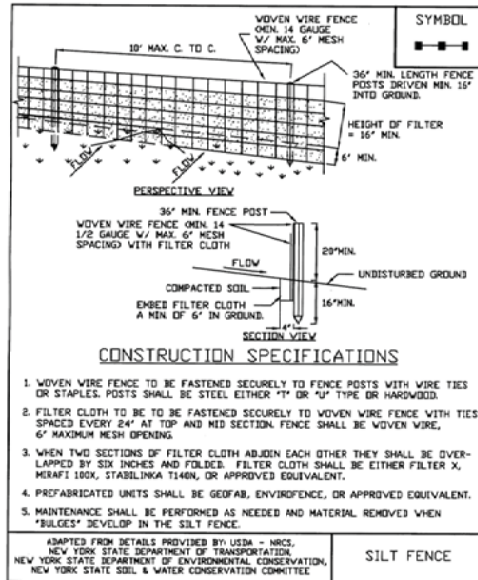
Figure 5A.35
Stabilized Construction Entrance



New York Standards and Specifications For Erosion and Sediment Control Page 5A.76 August 2005

1 STABILIZED CONSTRUCTION ENTRANCE
C12 NTS

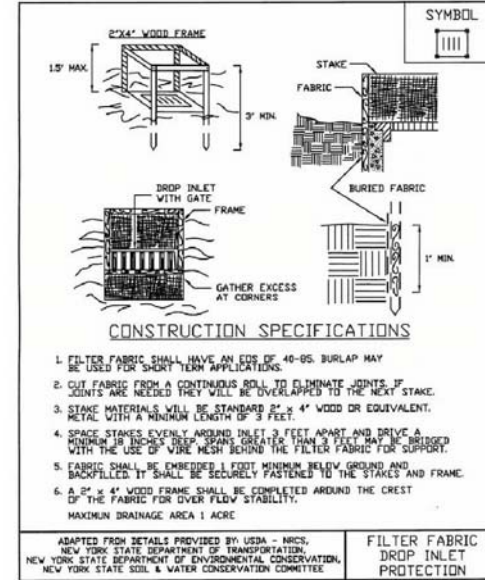
Figure 5A.8
Silt Fence



August 2005 Page 5A.21 New York Standards and Specifications For Erosion and Sediment Control

2 SILT FENCE
C12 NTS

Figure 5A.12
Filter Fabric Drop Inlet Protection



New York Standards and Specifications Page 5A.30 August 2005

3 FILTER FABRIC DROP INLET PROTECTION
C12 NTS

NOTE:

- FOR CONSTRUCTION SPECIFICATIONS, REFER TO THE NEW YORK STATE STANDARDS AND SPECIFICATIONS FOR EROSION AND SEDIMENT CONTROL (AUGUST 2005, OR LATEST EDITION).

NOTE: IT IS A VIOLATION OF THE NEW YORK STATE EDUCATION LAW FOR ANY PERSON TO ALTER THIS DOCUMENT IN ANY WAY, UNLESS ACTING UNDER THE DIRECTION OF A LICENSED PROFESSIONAL ENGINEER. IF A DOCUMENT BEARING THE SEAL OF AN ENGINEER IS ALTERED, THE ALTERING ENGINEER SHALL AFFIX TO THE DOCUMENT THEIR SEAL AND THE NOTATION "ALTERED BY" FOLLOWED BY THEIR SIGNATURE AND THE DATE OF SUCH ALTERATION, AND A SPECIFIC DESCRIPTION OF THE ALTERATION.

FD-DESIGN001_381098.DWG



NO.	DATE	DESCRIPTION	BY
1	08/01/05	FOR PERMIT	A. POTTS
2	08/01/05	FOR PERMIT	A. POTTS
3	08/01/05	FOR PERMIT	A. POTTS
4	08/01/05	FOR PERMIT	A. POTTS
5	08/01/05	FOR PERMIT	A. POTTS
6	08/01/05	FOR PERMIT	A. POTTS
7	08/01/05	FOR PERMIT	A. POTTS
8	08/01/05	FOR PERMIT	A. POTTS
9	08/01/05	FOR PERMIT	A. POTTS
10	08/01/05	FOR PERMIT	A. POTTS
11	08/01/05	FOR PERMIT	A. POTTS
12	08/01/05	FOR PERMIT	A. POTTS

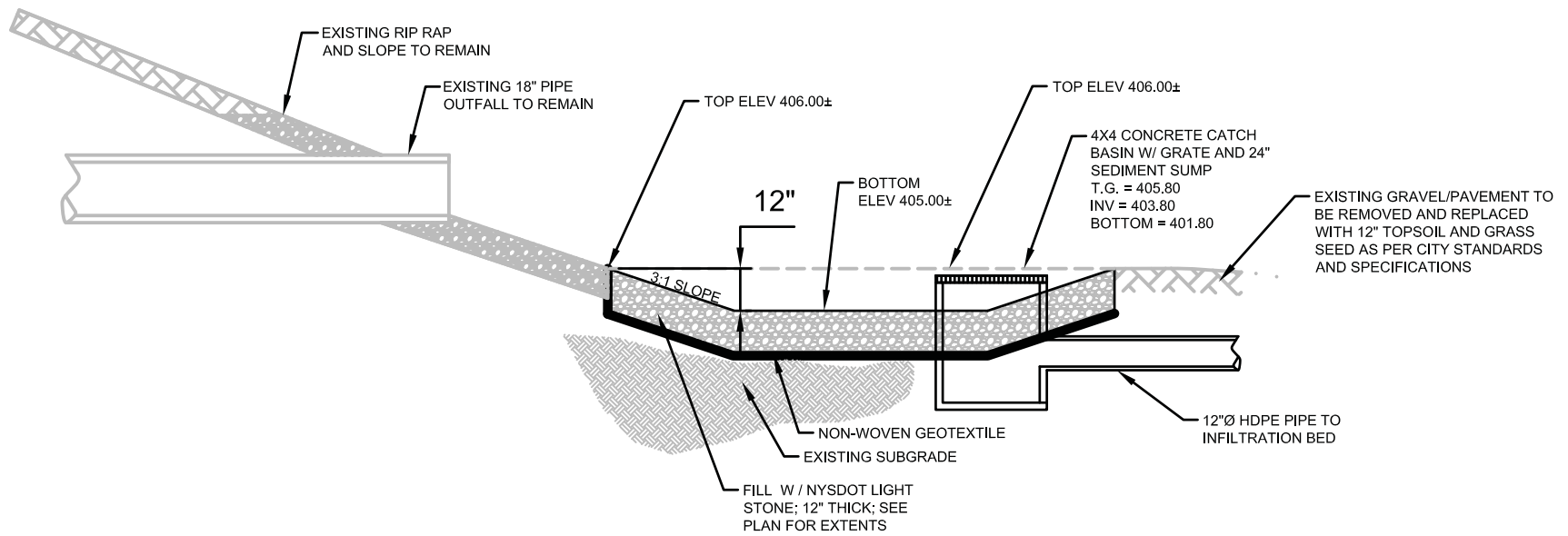
NO.	DATE	DESCRIPTION	BY
1	08/01/05	FOR PERMIT	A. POTTS
2	08/01/05	FOR PERMIT	A. POTTS
3	08/01/05	FOR PERMIT	A. POTTS
4	08/01/05	FOR PERMIT	A. POTTS
5	08/01/05	FOR PERMIT	A. POTTS
6	08/01/05	FOR PERMIT	A. POTTS
7	08/01/05	FOR PERMIT	A. POTTS
8	08/01/05	FOR PERMIT	A. POTTS
9	08/01/05	FOR PERMIT	A. POTTS
10	08/01/05	FOR PERMIT	A. POTTS
11	08/01/05	FOR PERMIT	A. POTTS
12	08/01/05	FOR PERMIT	A. POTTS

CH2M HILL
CIVIL
EROSION & SEDIMENT CONTROL DETAILS
PEARL STREET PARKING LOT

VERIFY SCALE	BAR IS ONE INCH ON ORIGINAL DRAWING.
DATE	JULY 2, 2010
PROJ	381098
DWG	C-12
SHEET	12 OF 12

ISSUED FOR BIDDING AND CONSTRUCTION

THIS DOCUMENT AND THE DESIGN AND DESIGN INFORMATION ARE THE PROPERTY OF CH2M HILL AND IS NOT TO BE USED IN WHOLE OR IN PART FOR ANY OTHER PROJECT WITHOUT THE WRITTEN AUTHORIZATION OF CH2M HILL. ©2004 CH2M HILL. ALL RIGHTS RESERVED.



RIP RAP APRON DETAIL

NTS