



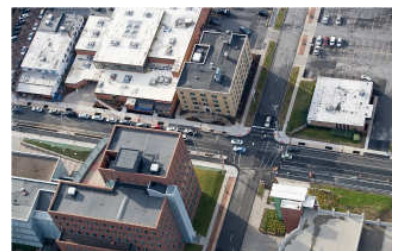
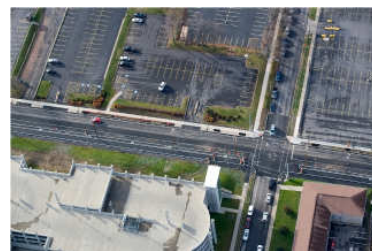
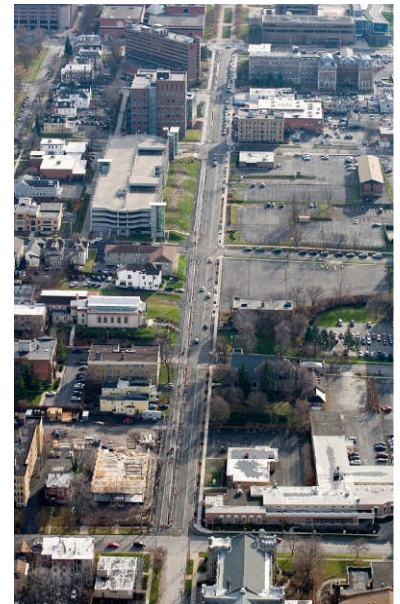
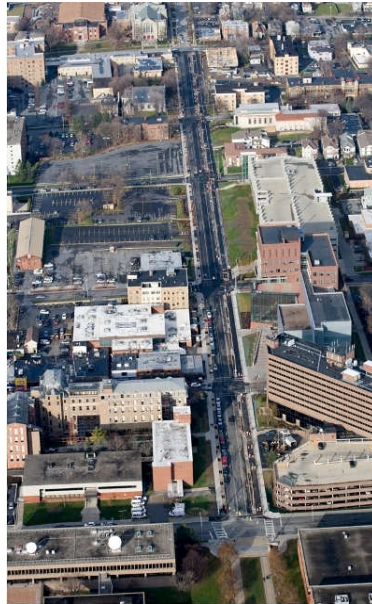
FACT SHEET

Connective Corridor Phase 1, Contract 1

Project Description: The Connective Corridor project is a major infrastructure plan that will create a strong visual and physical link along the major streetscape connections between Syracuse University and the downtown business districts. The project builds upon needed public works improvements, incorporating green infrastructure such as tree trenches and porous pavement into traffic-calming streetscape designs that feature bicycle lanes, landscape buffers between vehicular and pedestrian zones, and enhanced pedestrian facilities. The project required close collaboration and cooperation among the City of Syracuse, Syracuse University, and Onondaga County.

This first phase of the Connective Corridor project involves the design and construction of a “green street” on the section of University Avenue between East Genesee and Waverly Streets, in the heart of the Syracuse University area. The project is one of the most significant collaborations between the City, County and Syracuse University and will address a considerable amount of stormwater runoff once completed. In addition to large-scale capture, the project provides a showcase for the implementation of green infrastructure in urban settings in a highly traveled corridor of the City.

Project:	Connective Corridor Phase 1
Project Owner:	City of Syracuse
Project Location:	University Ave.
Sewershed:	Clinton/Lower MIS
GI Technology:	Green Street
Capture Area:	326,000 sq. ft.
Run-off Reduction:	5,742,000 gal/yr
Year Completed:	2011
Construction Cost:	\$948,717 (bid)
Prime Contractor:	Barrett Paving Materials, Inc.

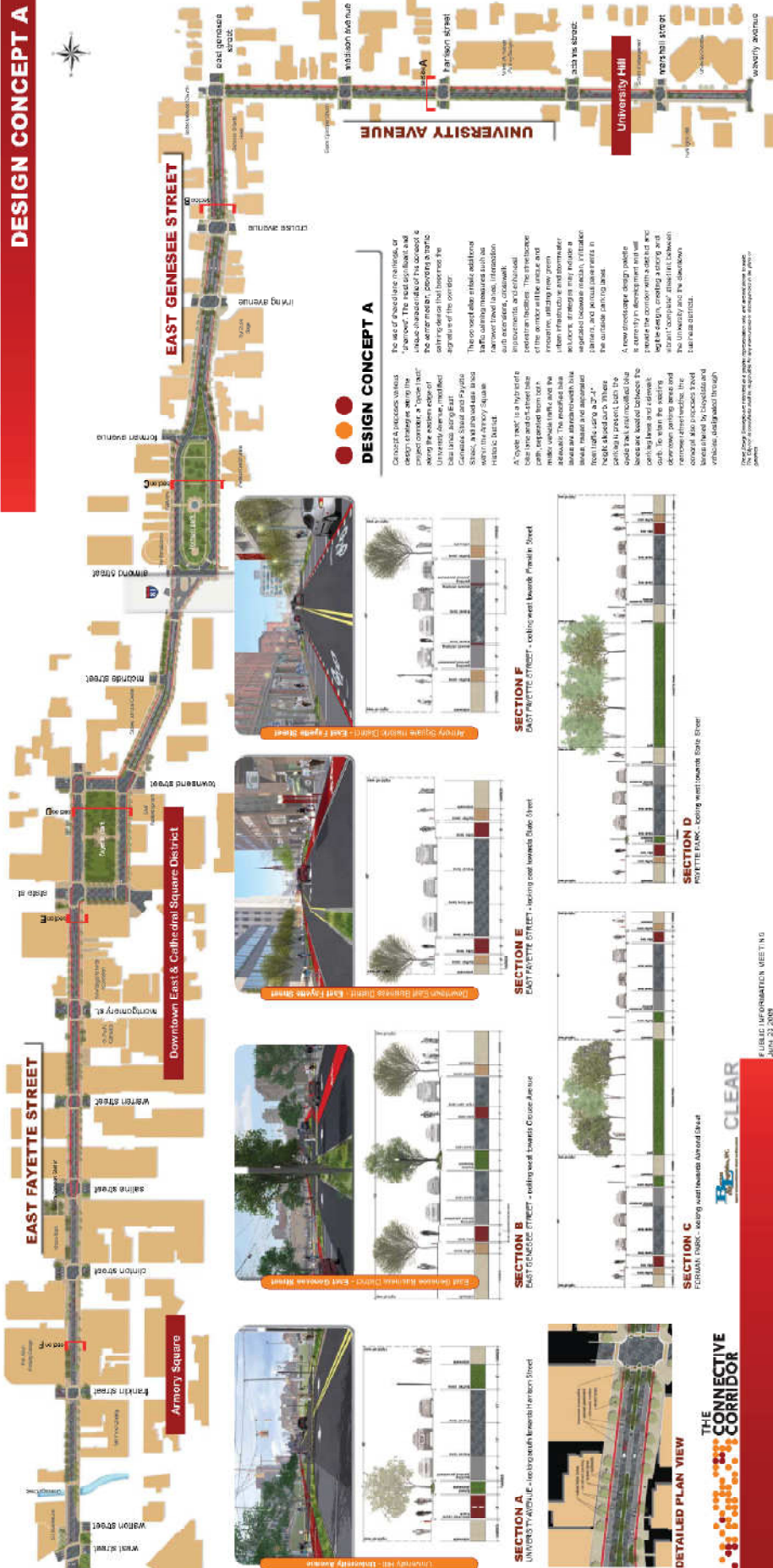


Above: Aerial Photos after Construction Complete



Conditions Prior to Construction

DESIGN CONCEPT A



DESIGN CONCEPT A

Concept A increases various design strategies along the project corridor. A "green" and "blue" street design approach is used to improve the corridor's appearance and provide a more pleasant experience for users. The design approach includes:

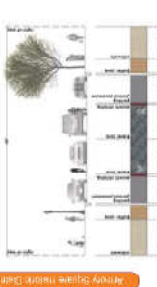
- A new landscape design palette is necessary to complement the existing landscape and provide a more cohesive look.
- The design approach includes a mix of street types and uses to create a more vibrant and active street scene.
- The design approach includes a mix of building heights and styles to create a more diverse and interesting streetscape.
- The design approach includes a mix of public spaces and amenities to provide a more enjoyable and walkable environment.



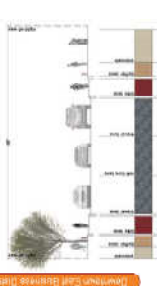
University Hill - University Avenue



University Hill - University Avenue



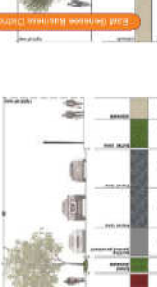
SECTION B EAST GENESSEE STREET - looking west towards Center Avenue



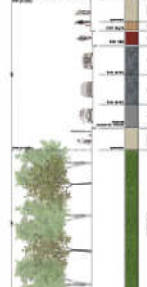
SECTION C EAST GENESSEE STREET - looking east towards University Avenue



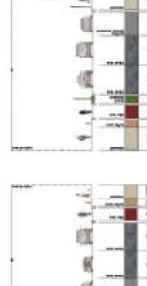
SECTION D EAST GENESSEE STREET - looking west towards State Street



SECTION E EAST FAYETTE STREET - looking east towards Center Avenue



SECTION F EAST FAYETTE STREET - looking west towards Franklin Street



SECTION G EAST FAYETTE STREET - looking east towards University Avenue



SECTION H EAST FAYETTE STREET - looking west towards State Street



SECTION I EAST FAYETTE STREET - looking east towards University Avenue

THE CONNECTIVE CORRIDOR

Public Information Meeting June 23, 2009