

ONONDAGA COUNTY GREEN INFRASTRUCTURE PROGRAM

BID REF # 7622

GREEN ROOF AT THE SALINA STREET POST OFFICE

ISSUED FOR BIDDING AND CONSTRUCTION

FOR

COUNTY OF ONONDAGA, NEW YORK

DEPARTMENT OF WATER

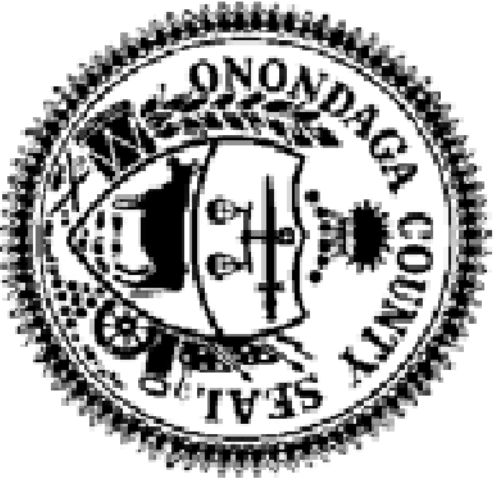
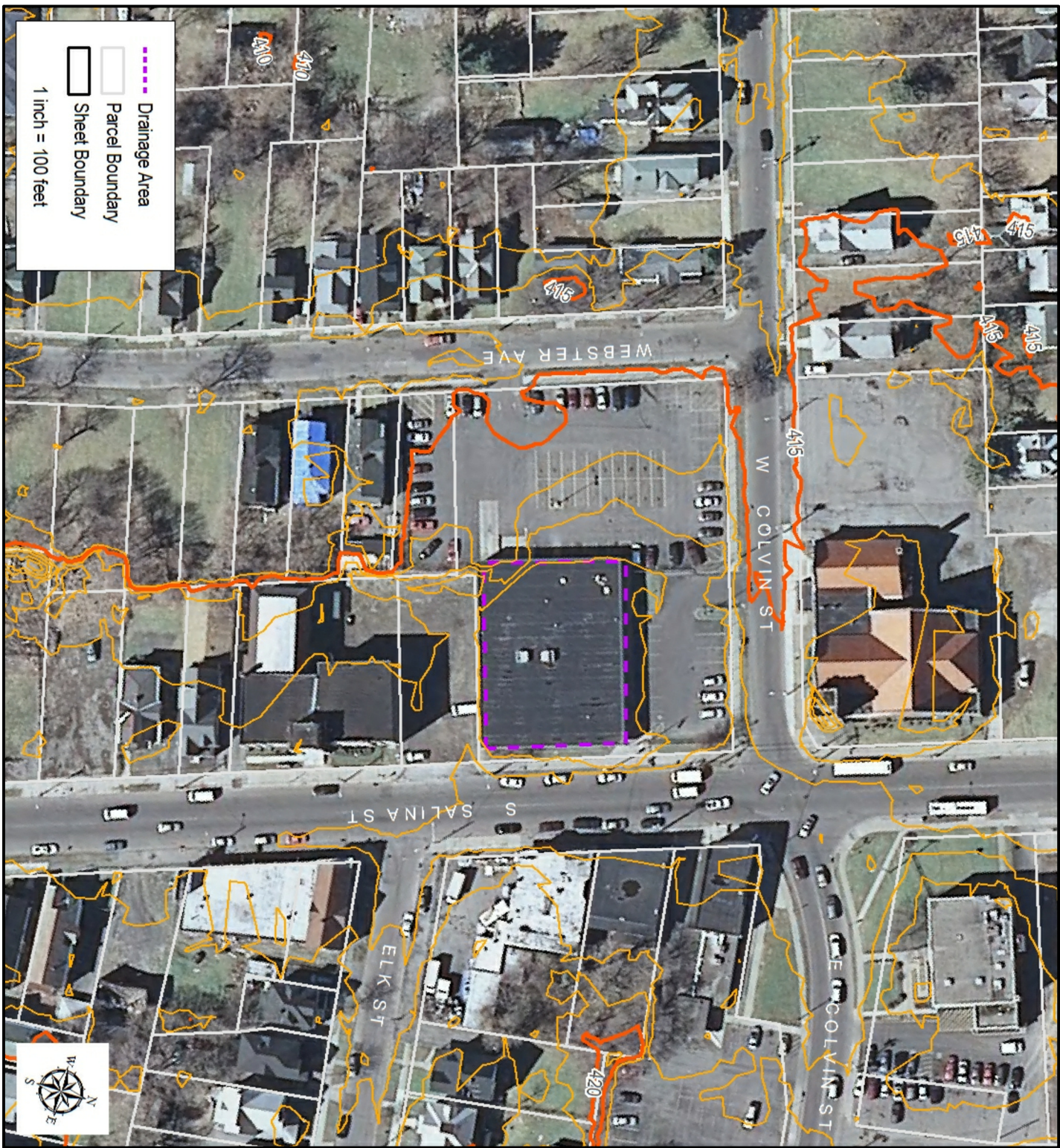
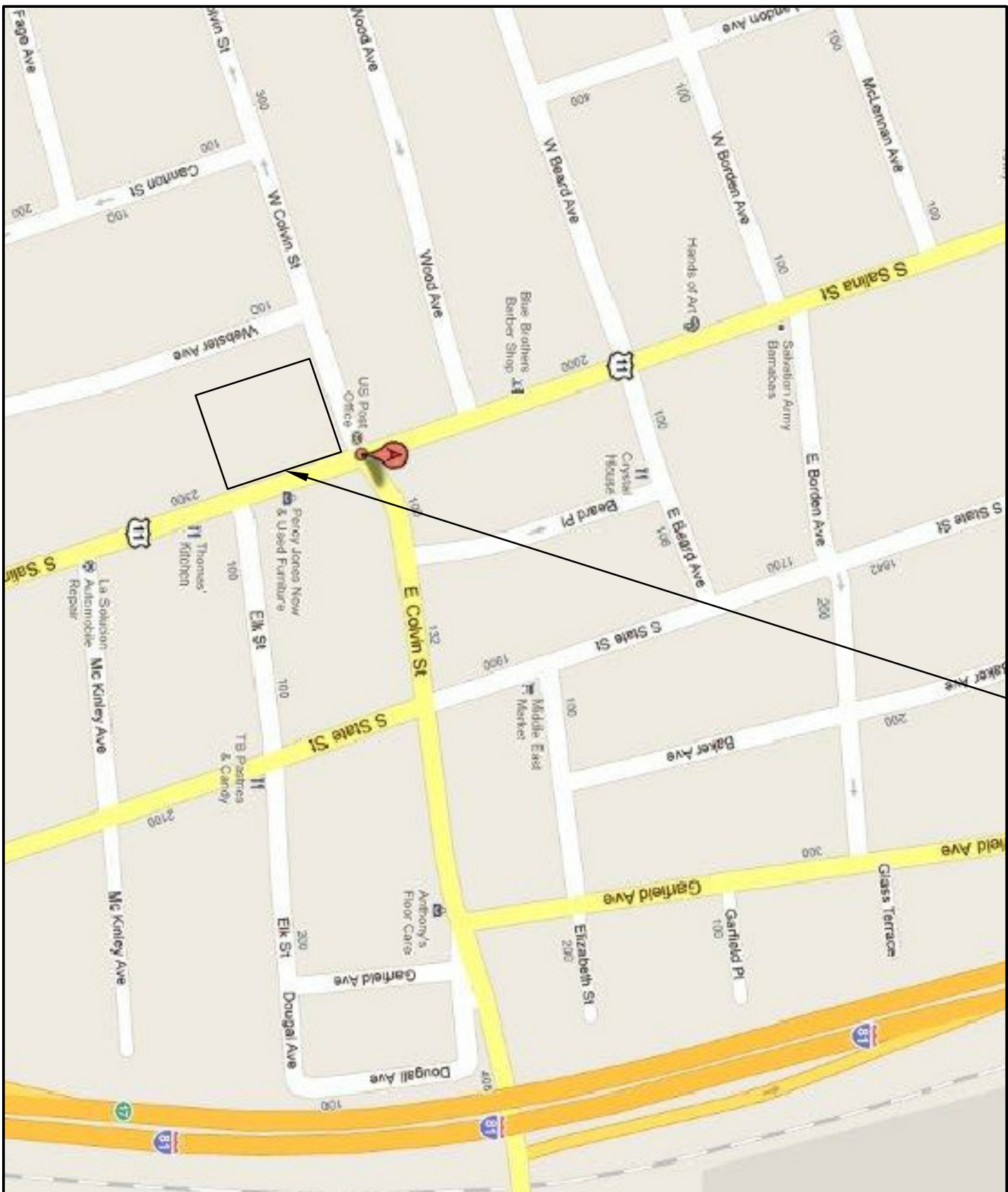
ENVIRONMENT PROTECTION (OCDWEP)

OCDWEP COMMISSIONER: TOM RHOADS

DRAWING INDEX

SHEET NO	DRAWING NO.	DESCRIPTION
1	G-1	TITLE SHEET
2	G-2	AREA PLAN
3	D-1	DEMOLITION PLAN
4	A-1	ROOF PLANTING PLAN
5	A-2	DETAILS 1 OF 2
6	A-3	DETAILS 2 OF 2

NOTE: IT IS A VIOLATION OF THE NEW YORK STATE EDUCATION LAW FOR ANY PERSON TO ALTER THIS DOCUMENT IN ANY WAY, UNLESS ACTING UNDER THE DIRECTION OF A LICENSED PROFESSIONAL ENGINEER. IF A DOCUMENT BEARING THE SEAL OF AN ENGINEER IS ALTERED, THE ALTERING ENGINEER SHALL AFFIX TO THE DOCUMENT THEIR SEAL AND THE NOTATION "ALTERED BY" FOLLOWED BY THEIR SIGNATURE AND THE DATE OF SUCH ALTERATION, AND A SPECIFIC DESCRIPTION OF THE ALTERATION.



JOANNIE M. MAHONEY
ONONDAGA COUNTY EXECUTIVE

APPROVED:

OCDWEP COMMISSIONER : TOM RHOADS

DATE:

COUNTY BID REFERENCE #

CH2MHILL		430 GENESEE STREET SUITE 400 SYRACUSE, NY 13202		M-12A U.S POST OFFICE AT SALINA 2200 S. SALINA ST. ONONDAGA COUNTY SYRACUSE, NY		NO. DATE		DESCRIPTION REVISION		APVR BY	N APVD
		GENERAL TITLE SHEET				DSGN	DATE	CHK	DR	APVD	
						ZF. MONGE		G. HUMPHREYS		A POTTS	
										GD. MOSURE	

REUSE OF DOCUMENTS: THIS DOCUMENT, AND THE IDEAS AND DESIGNS INCORPORATED HEREIN, AS AN INSTRUMENT OF PROFESSIONAL SERVICE, IS THE PROPERTY OF CH2M HILL AND IS NOT TO BE USED, IN WHOLE OR IN PART, FOR ANY OTHER PROJECT WITHOUT THE WRITTEN AUTHORIZATION OF CH2MHILL.

© CH2M HILL 2004. ALL RIGHTS RESERVED.

1

2

3

4

5

6

GENERAL NOTES:

- EXISTING STRUCTURES AND BUILDING FEATURES ARE SHOWN SCREENED AND/ OR LIGHT LINED. NEW STRUCTURES AND BUILDING FEATURES ARE SHOWN HEAVY LINED.
- CONTRACTOR IS ADVISED THAT THIS POST OFFICE IS AN ACTIVE FACILITY. CONTRACTOR SHALL CONTROL AND SCHEDULE ITS ACTIVITIES SO AS TO MINIMIZE DISRUPTION TO POST OFFICE ACTIVITIES AND PROTECT THE PUBLIC FROM HARM CAUSED BY THE CONTRACTOR'S ACTIVITIES.
- CONTRACTOR'S STAGING AND LAYDOWN ACTIVITIES SHALL BE CONFINED TO THE LAYDOWN AREA SHOWN.
- CONTRACTOR SHALL BE SOLELY RESPONSIBLE FOR SECURITY OF THE LAY DOWN AREA.
- CONTRACTOR SHALL PROVIDE ITS OWN EXTERIOR MEANS OF ROOF ACCESS DURING THE COURSE OF THE WORK.
- CONTRACTOR RESPONSIBLE FOR SECURING ALL NECESSARY PERMITS.
- CONTRACTORS SHALL RESTORE LAYDOWN AREA TO PRE-DISTURBED CONDITION UPON COMPLETION OF THE WORK.
- CONTRACTOR SHALL VERIFY ALL DIMENSIONS AND CONDITIONS AND NOTIFY THE ENGINEER IMMEDIATELY OF ALL POTENTIAL CONFLICTS.
- WORK SHALL BE SEQUENCED SUCH THAT THE ROOF STRUCTURE IS NOT OVERLOADED AT ANY TIME DURING THE COURSE OF THE WORK.
- CONTRACTOR RESPONSIBLE FOR PREVENTING WEATHER DAMAGE TO THE BUILDING DURING THE COURSE OF THE CONSTRUCTION.

NYS BUILDING CODE DESIGN CRITERIA:

WIND LOAD:

BASIC WIND SPEED: 90 MPH
(3 SEC GUST @ 33 FT)
EXPOSURE: B
OCCUPANCY CATEGORY: II
IMPORTANCE FACTOR: 1.00

SNOW LOAD:

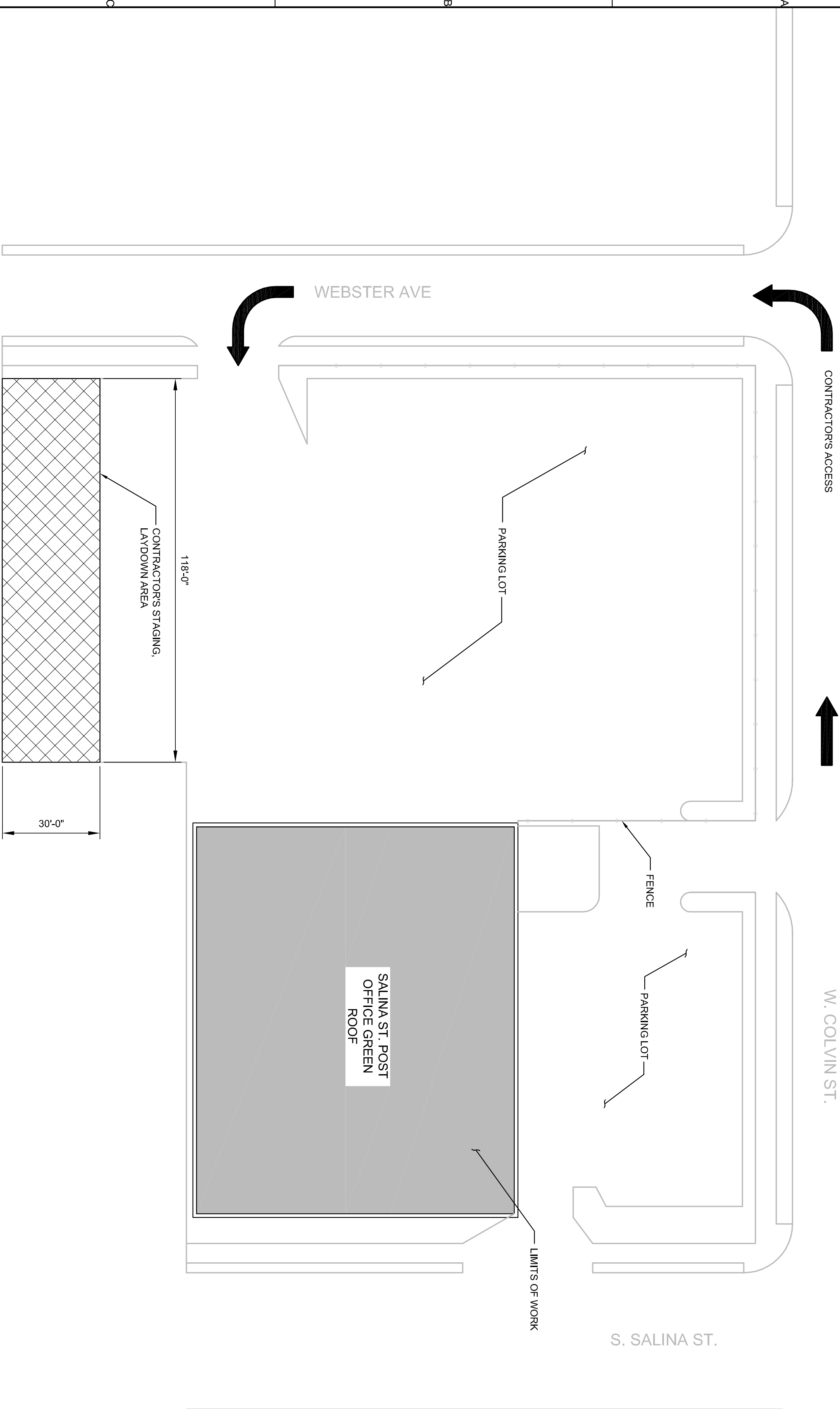
GROUND SNOW LOAD, Pg: 50 PSF
TERRAIN CATEGORY: B
EXPOSURE FACTOR, Ce: 0.9
THERMAL FACTOR, Ct: 1.1
IMPORTANCE FACTOR: 1.0
FLAT ROOF SNOW LOAD: 34.65 PSF

SEISMIC LOAD:

SEISMIC USE GROUP: I
OCCUPANCY IMPORTANCE FACTOR: 1.0
MAPPED SPECIAL RESPONSE:
Ss : 0.287
Sl : 0.147
DESIGN SPECIAL RESPONSE:
SDS : 0.191
SDI : 0.098

LEGEND

	EXISTING TO BE REMOVED
	VEGETATED ROOF AREA
	LIGHTWEIGHT DRAINAGE MEDIA
	GROWTH MEDIA
	STAGING/ LAYDOWN AREA



CONTRACTOR STAGING PLAN - PLAN AT GROUND EL 419.00
1" = 20'-0"

VERIFY SCALE BAR IS ONE INCH ON ORIGINAL DRAWING. 0 1	DATE JULY 2012		PROJ 381098		DWG G-2		SHEET 2 OF 6	
	DATE JULY 2012		PROJ 381098		DWG G-2		SHEET 2 OF 6	
	DATE JULY 2012		PROJ 381098		DWG G-2		SHEET 2 OF 6	
	DATE JULY 2012		PROJ 381098		DWG G-2		SHEET 2 OF 6	

CH2MHILL

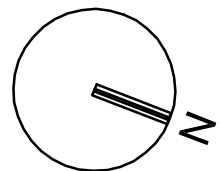
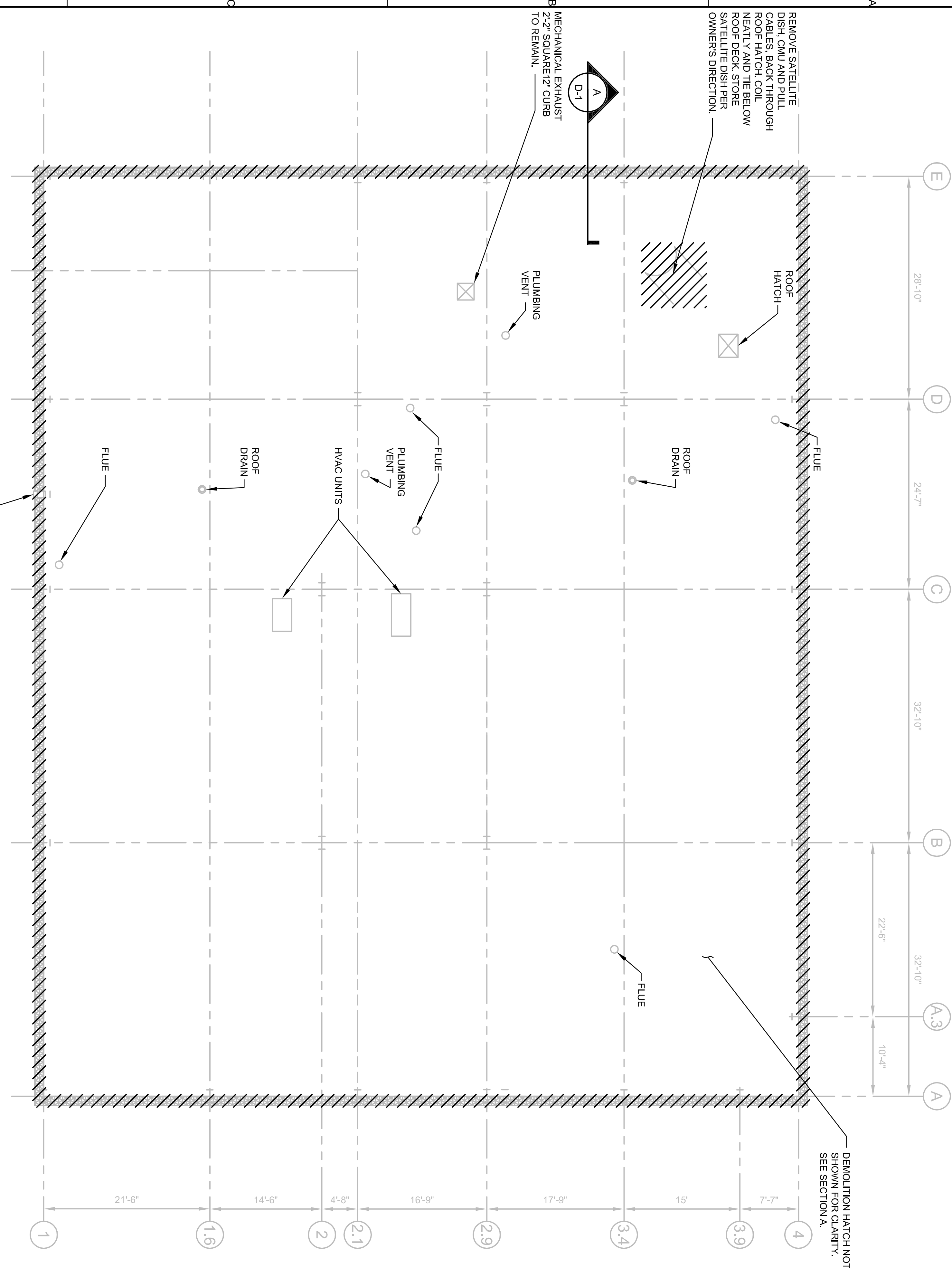
GENERAL
SALINA STREET POST OFFICE
AREA PLAN

430 GENESEE STREET
SUITE 400
SYRACUSE, NY 13202
M-12A
U.S POST OFFICE AT SALINA ST.
2200 S. SALINA ST.
ONONDAGA COUNTY
SYRACUSE, NY

NO	DATE	DESCRIPTION					APVR	N
NO.	DATE	REVISION					BY	APVD
DSGN		DR	CHK	APVD				
	ZF. MONGE	G. HUMPHREYS	A POTTS	GD. MOSURE				

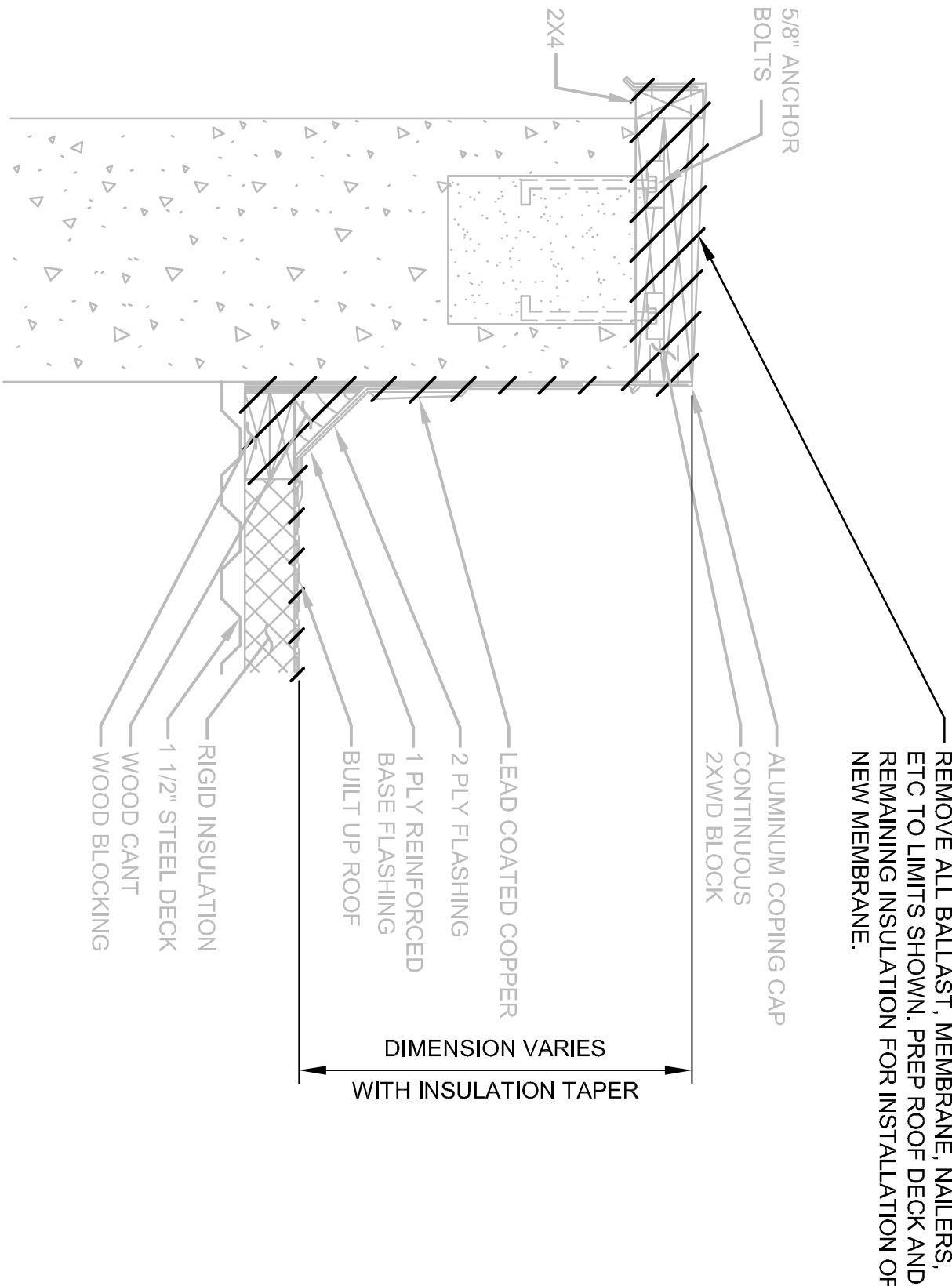
GENERAL CONSTRUCTION NOTES:

- 1. CONTAINERIZE ALL DEMOLITION DEBRIS AT THE END OF EACH WORKDAY.
- 2. CONTRACTOR SHALL NOT EXPOSE MORE ROOF THAN CAN BE WATER PROOFED IN A SINGLE WORK DAY.
- 3. REMOVE BUILT-UP ROOF, FLASHING AND COPPING CAP AS SHOWN.



ROOF DEMOLITION PLAN - PLAN AT EL. 440.00

1/8" = 1'-0"



SECTION A-A

NTS

D-1

CH2MHILL

DEMOLITION
ROOF DEMOLITION PLAN

430 GENESEE STREET
SUITE 400
SYRACUSE, NY 13202

M-12A
U.S POST OFFICE AT SALINA ST.
2200 S. SALINA ST.
ONONDAGA COUNTY
SYRACUSE, NY

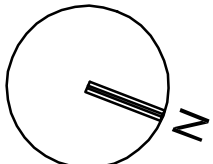
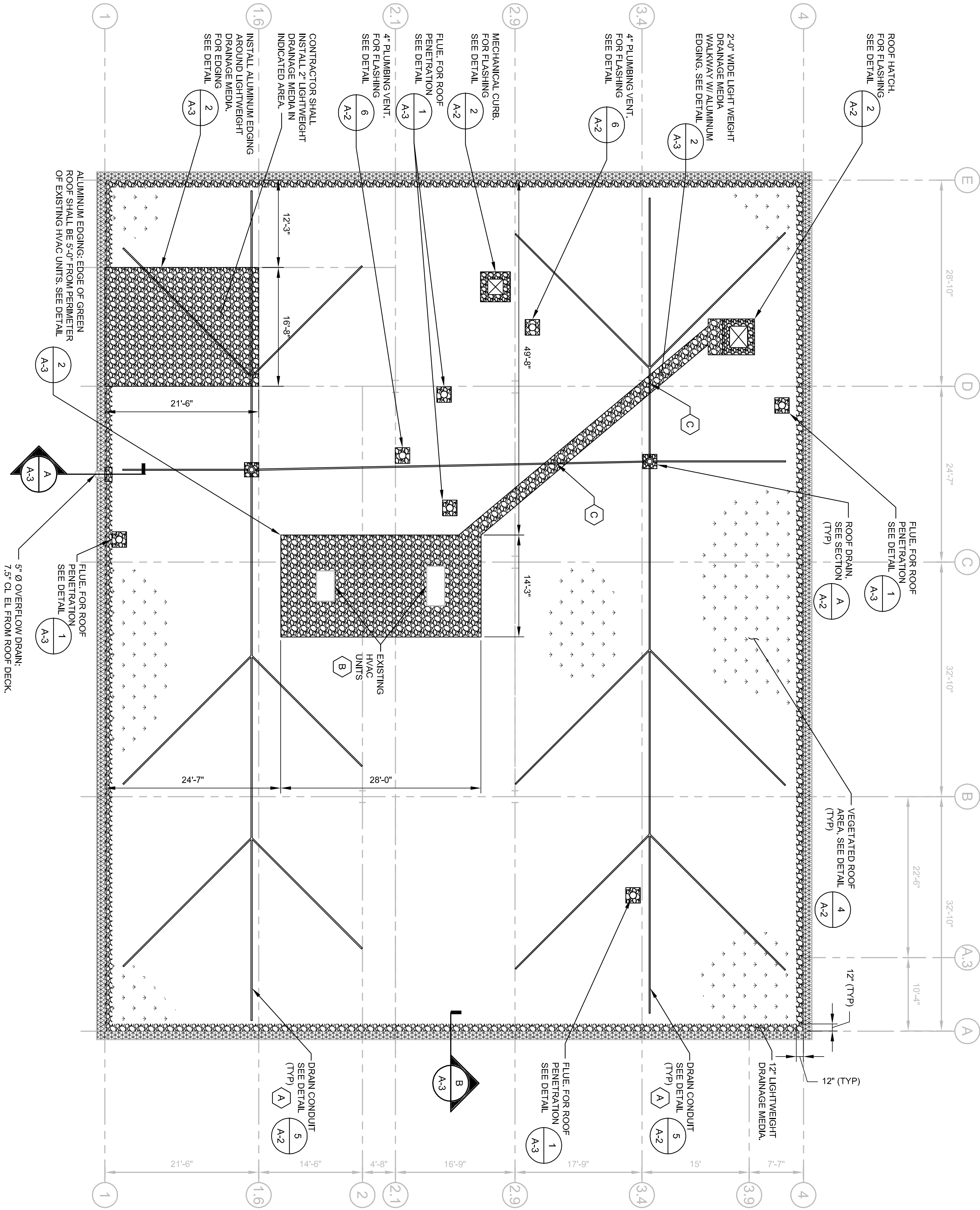
NO	DATE	DESCRIPTION					APVR	N
NO.	DATE	REVISION					BY	APVD
DSGN		DR	CHK	APVD				
	ZF. MONGE	G. HUMPHREYS	A POTTS	GD. MOSURE				

GENERAL CONSTRUCTION NOTES:

- 1. CONTRACTOR SHALL INSTALL DRAIN CONDUIT SUCH THAT TERMINATION OF CONDUIT IS 1'-6" FROM EDGE OF LIGHT WEIGHT DRAINAGE MEDIA.
- 2. CONTRACTOR SHALL FIELD VERIFY ALL DIMENSIONS AND FEATURES AND SHALL COORDINATE ITS WORK WITH ACTUAL CONDITIONS AND DIMENSIONS.

KEYNOTES:

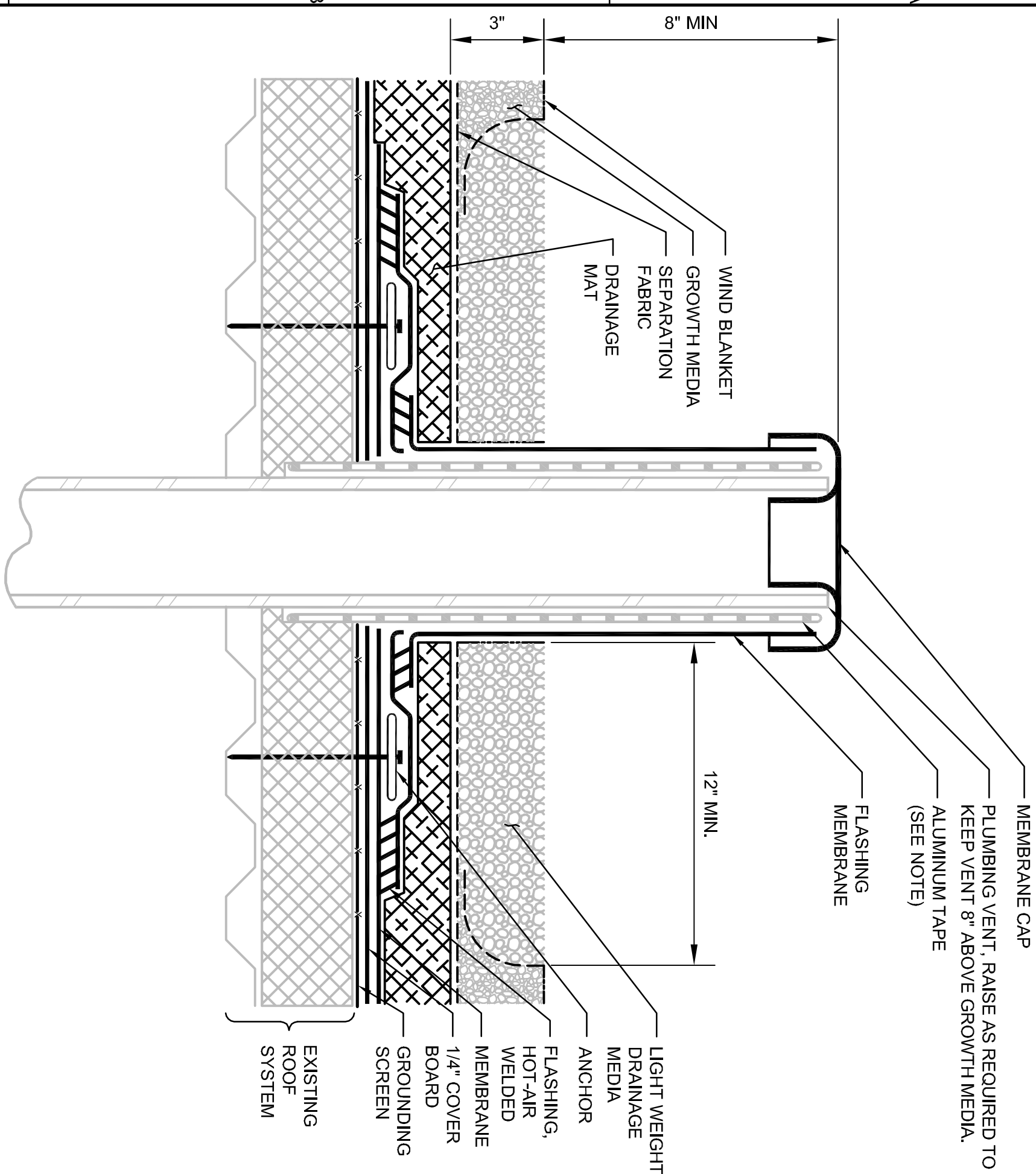
- A. CONTRACTOR SHALL DESIGN AND SUBMIT DRAINAGE SYSTEM LAYOUT FOR APPROVAL. DRAINAGE SYSTEM LAYOUT SHALL BE DESIGNED TO MEET THE DRAINAGE REQUIREMENTS OF THE CONTRACTOR-SELECTED GROWTH MEDIA AND THE VEGETATION.
- B. FLASH EXISTING CURBS PER DETAIL
- C. RUN SOLID, SCH 40 PVC DRAINAGE CONDUIT PIPE THROUGH LIGHT WEIGHT DRAINAGE MEDIA. WRAP DRAINAGE CONDUIT JOINT IN SEPARATION FABRIC.



GREEN ROOF PLAN - PLAN AT EL 440.00

1/8" = 1'-0"

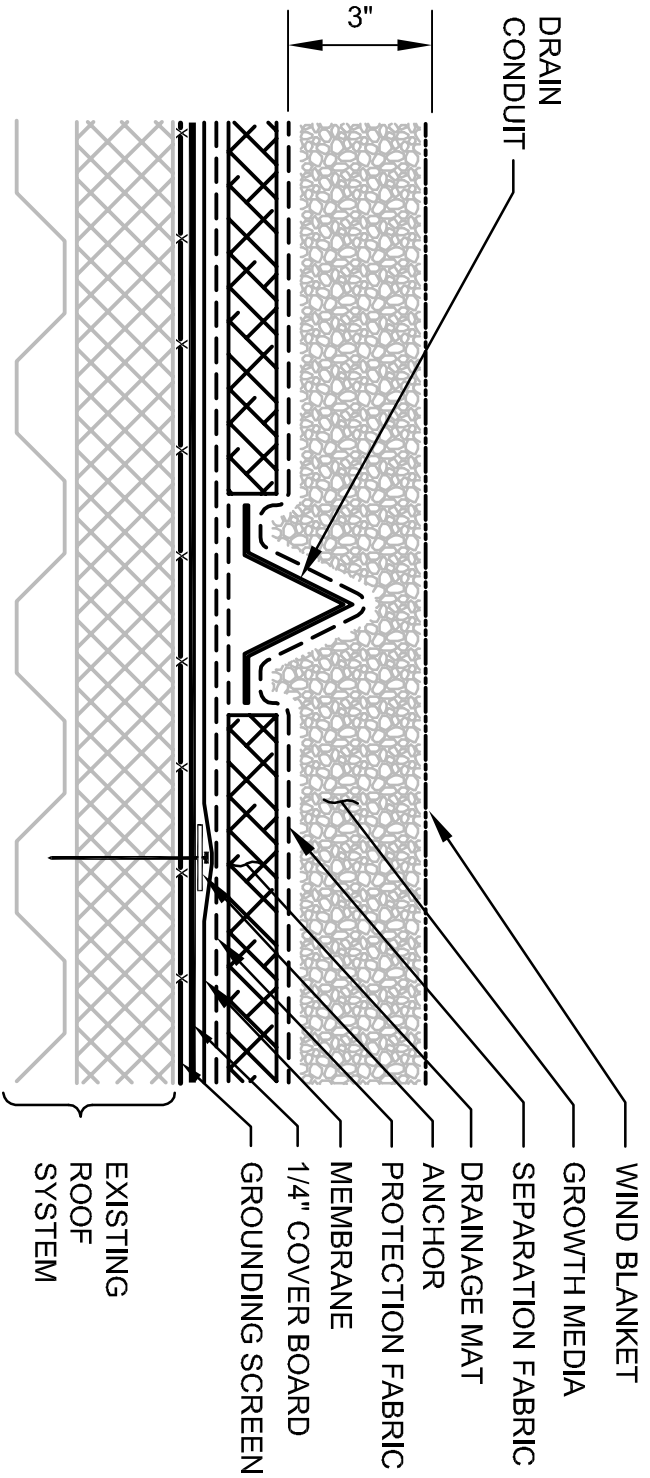
ISSUED FOR BIDDING AND CONSTRUCTION																
SHEET	DATE	PROJ	DWG	VERIFY SCALE BAR IS ONE INCH ON ORIGINAL DRAWING. 0	CH2MHILL		430 GENESEE STREET SUITE 400 SYRACUSE, NY 13202									
					ARCHITECTURAL		M-12A									
					ROOF PLANTING PLAN		U.S POST OFFICE AT SALINA ST. 2200 S. SALINA ST. ONONDAGA COUNTY SYRACUSE, NY									
4 OF 6	JULY 2012	381098	A-1						NO	DATE	DESCRIPTION		APVR	N		
									NO.	DATE	REVISION		BY	APVD		
									DSGN	ZF. MONGE	DR	G. HUMPHREYS	CHK	A POTTS	APVD	GD. MOSURE



- NOTES:
- ALUMINUM TAPE IS REQUIRED IF EXISTING PENETRATION IS CONTAMINATED.

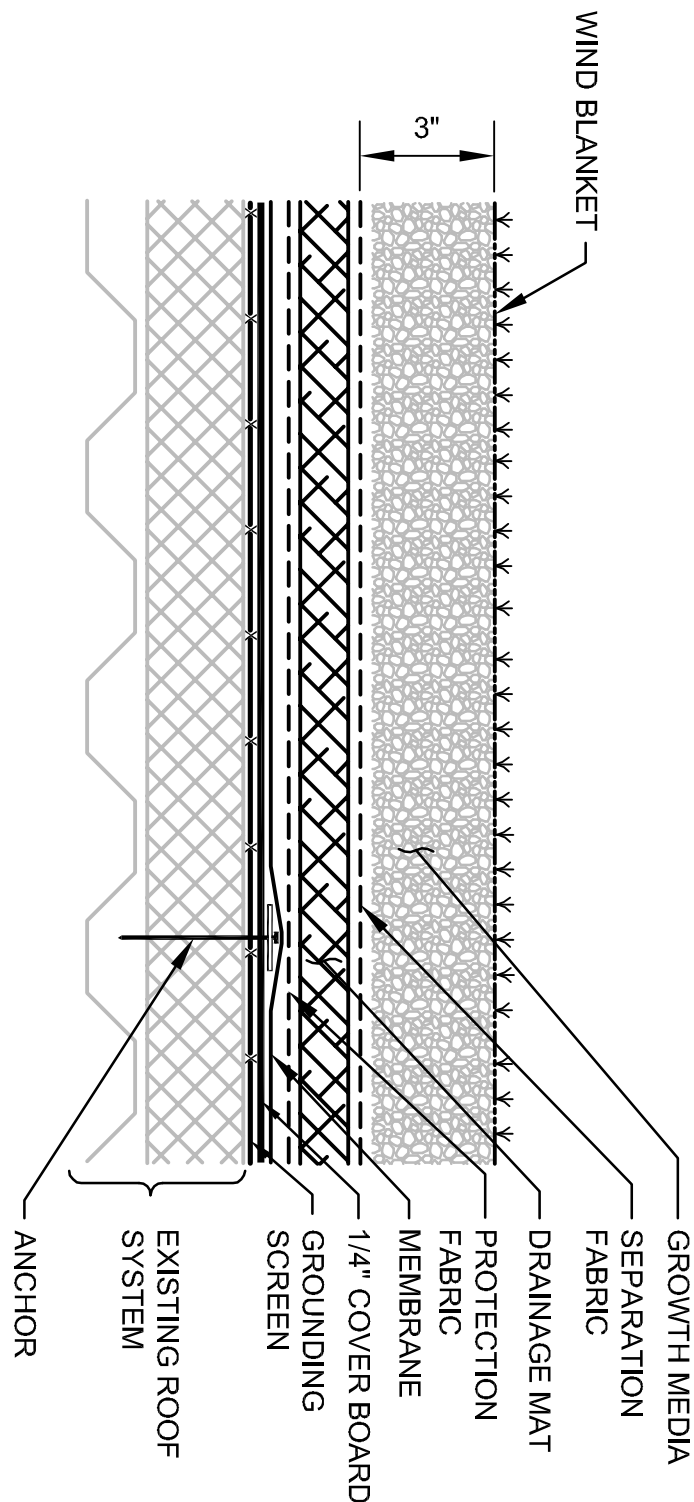
6
ROOF PENETRATION WITH GRAVEL BORDER, PLUMBING VENT

NTS
A-1



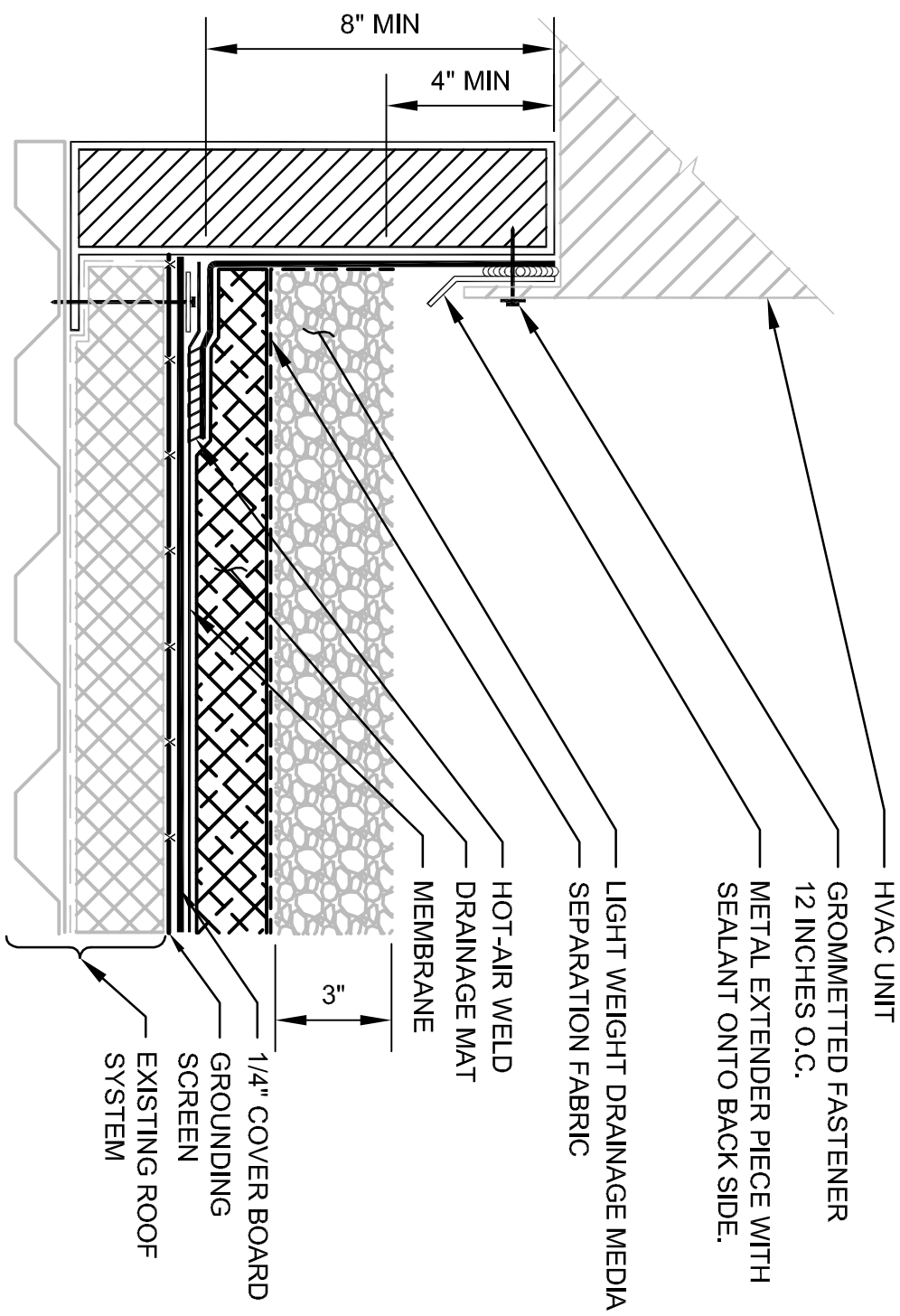
5
DRAIN CONDUIT

3" = 1'-0"
A-1



4
VEGETATED ROOF AREA

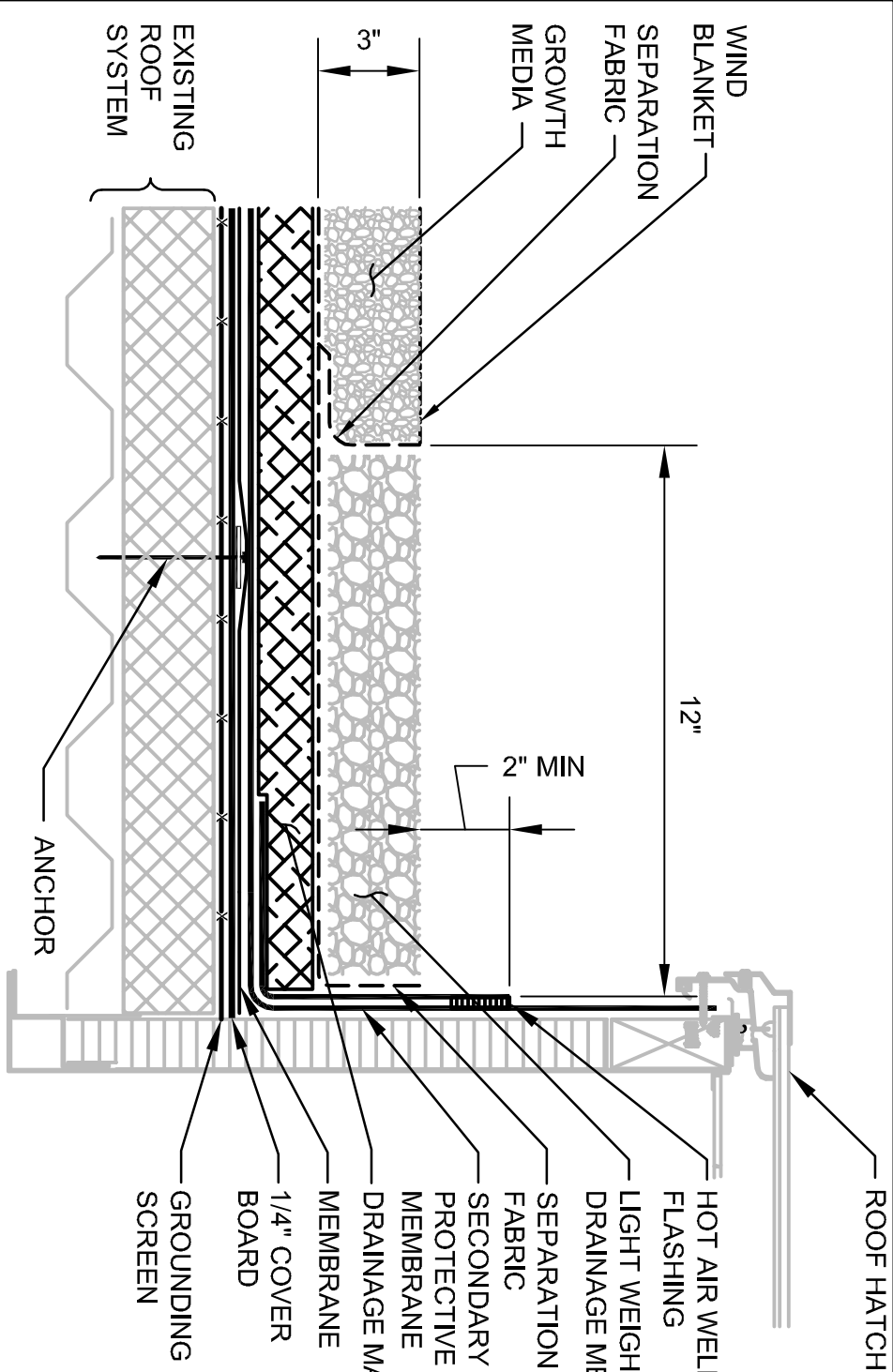
A-1



- NOTES:
- METAL EXTENDER PIECE IS REQUIRED IF EXISTING COUNTERFLASHING IS CONTAMINATED AND OR COUNTERFLASHING FASCA IS LESS THAN 4 INCHES WIDE. FASTENED 12 INCHES O.C. WITH GROMMETTED FASTENER.

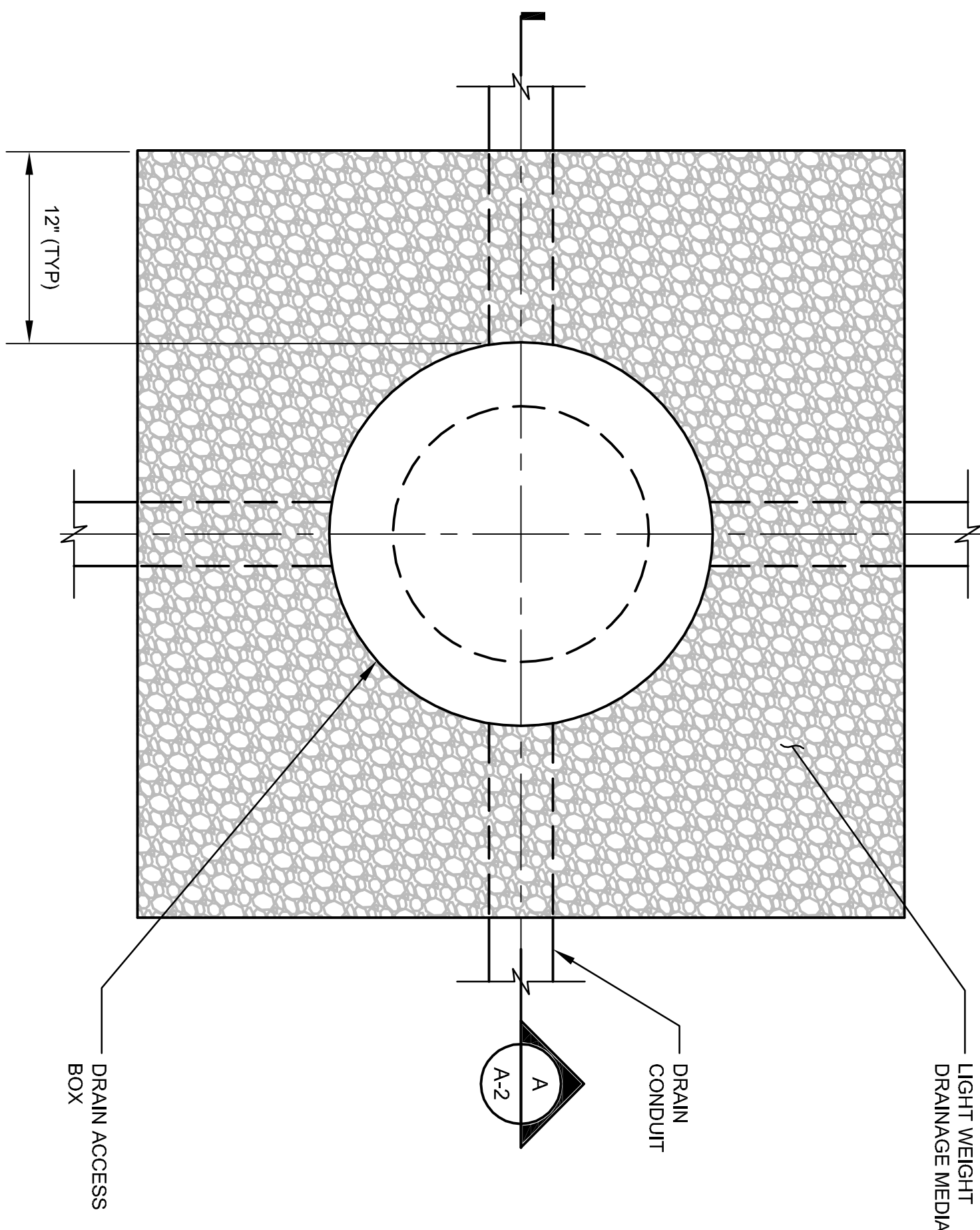
3
NON-REMOVABLE CURB FLASHING

NTS
A-1



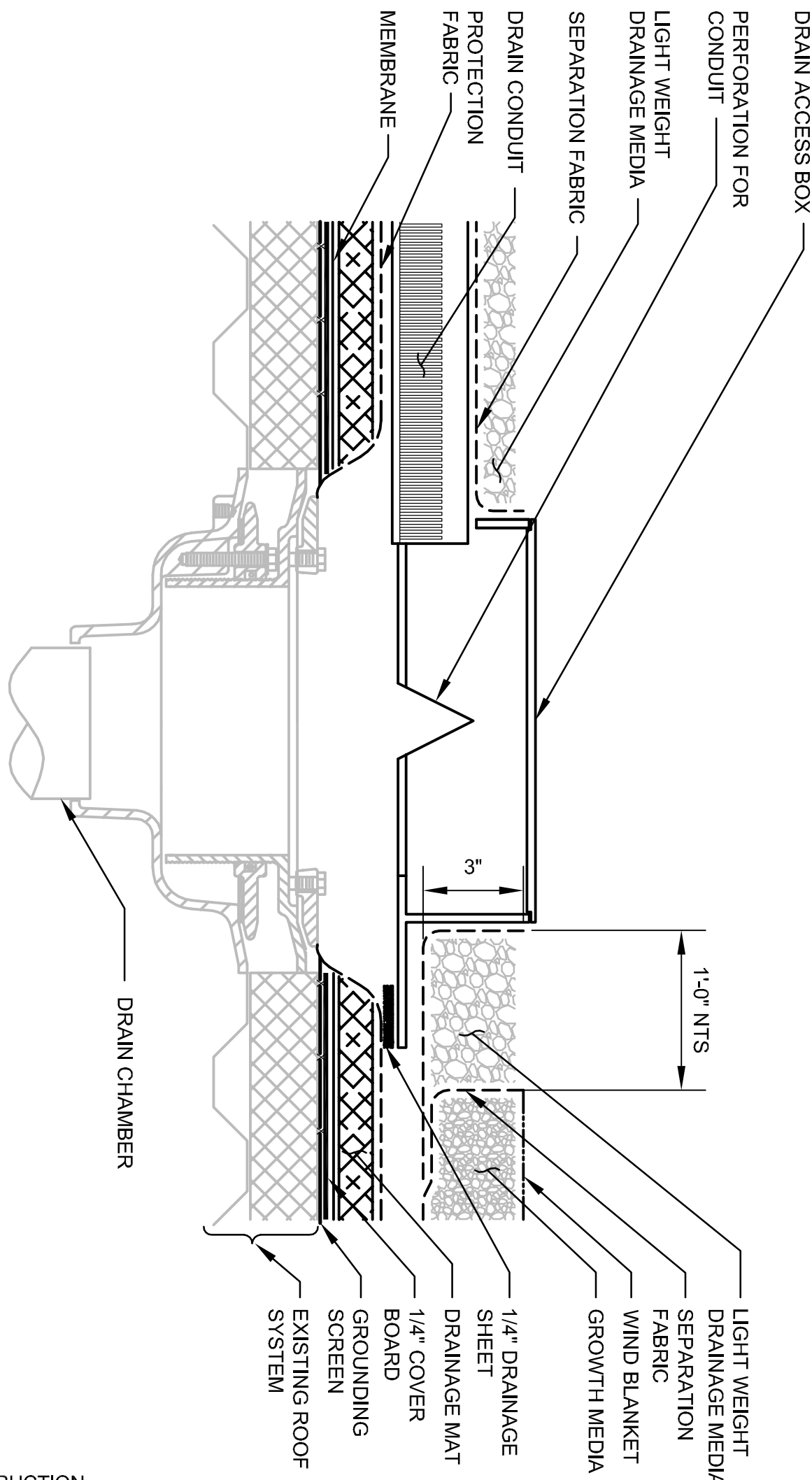
2
GREEN ROOF AT ROOF HATCH/MECHANICAL EXHAUST

3" = 1'-0"
A-1



1
ROOF DRAIN DETAIL

A-1



- NOTES:
- REMOVE ROOF DRAIN STRAINER CASTING AND PREPARE DRAIN FOR NEW DRAIN ACCESS BOX.

A
ROOF DRAIN WITH DRAIN CONDUIT IN DRAINAGE AREA

3" = 1'-0"
A-2

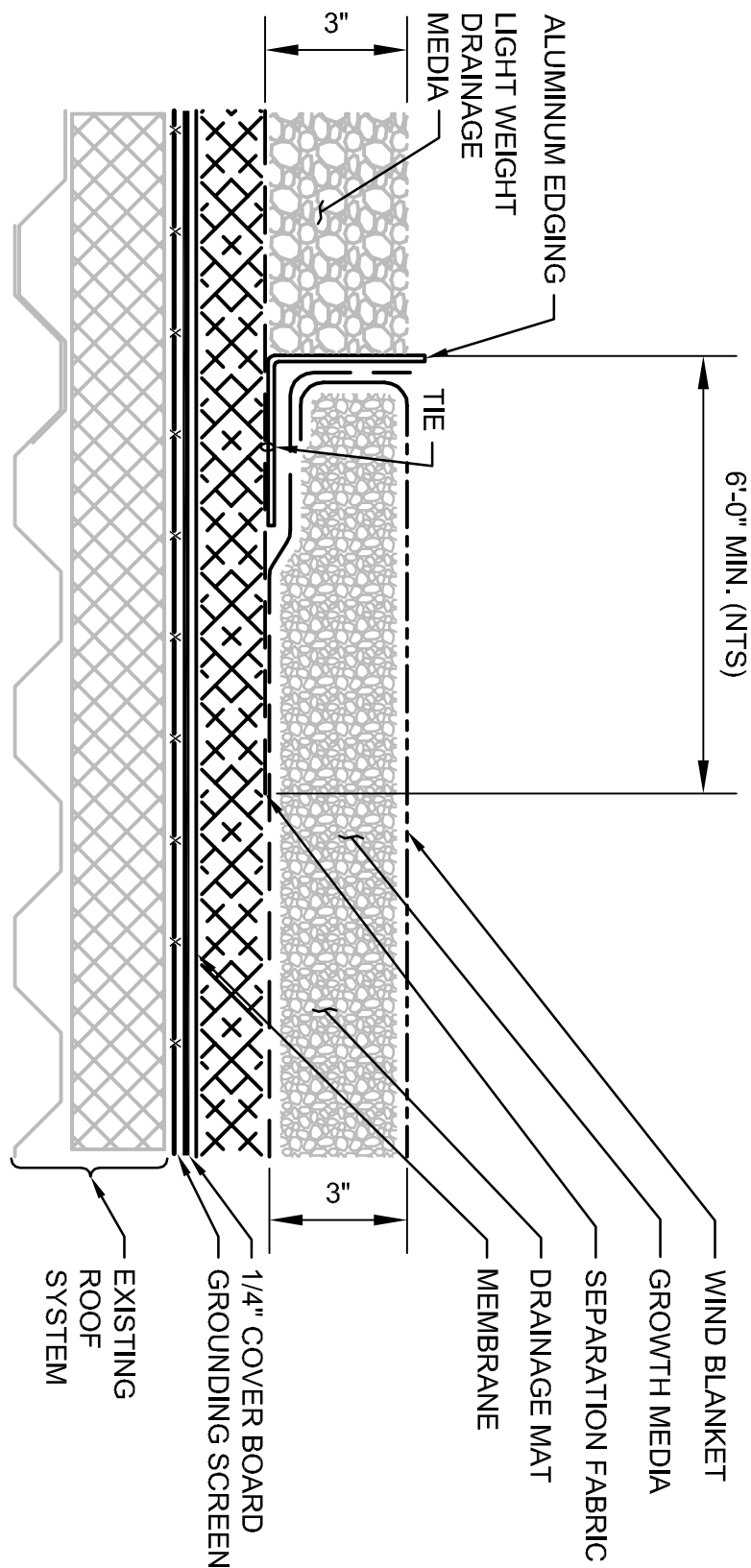
CH2MHILL

ARCHITECTURAL
DETAILS 1 OF 2

430 GENESEE STREET
SUITE 400
SYRACUSE, NY 13202

M-12A
U.S POST OFFICE AT SALINA ST.
2200 S. SALINA ST.
ONONDAGA COUNTY
SYRACUSE, NY

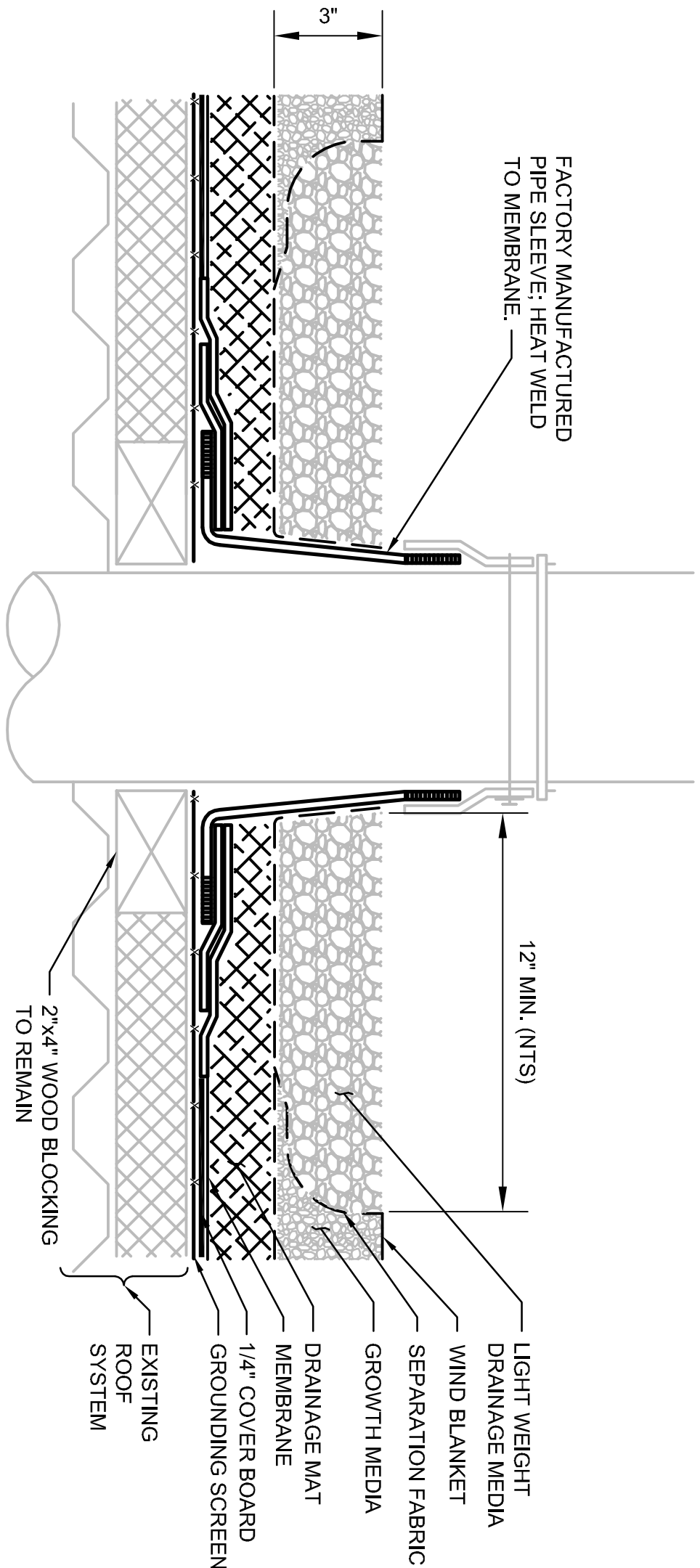
NO.	DATE	DESCRIPTION	APVR	N
NO.	DATE	REVISION	BY	APVD
DSGN	ZF. MONGE	DR	G. HUMPHREYS	CHK
			A POTTS	APVD
			GD. MOSURE	APVD



2 ALUMINUM EDGE

NTS

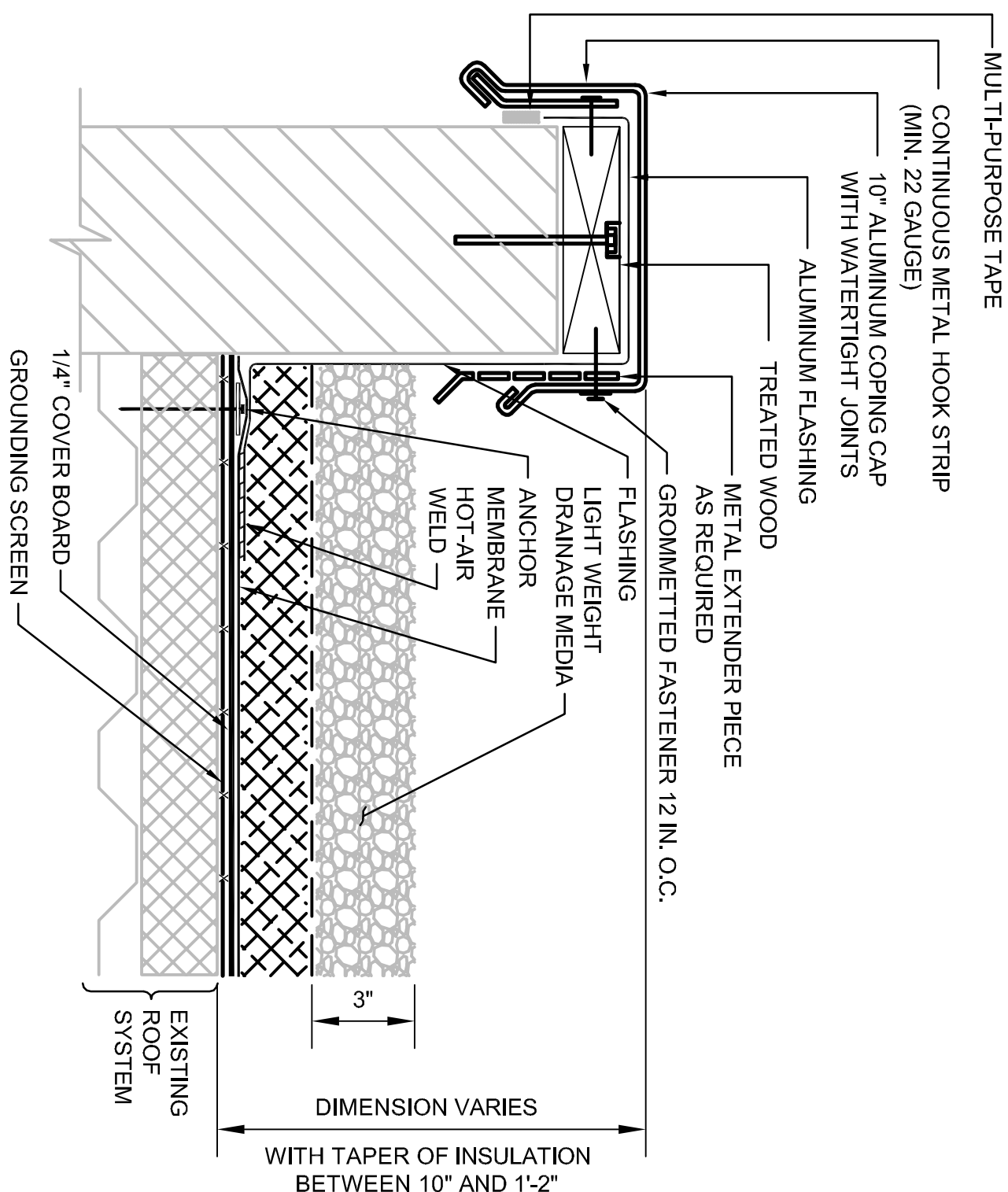
A-1



1 ROOF PENETRATION, MECHANICAL VENT

NTS

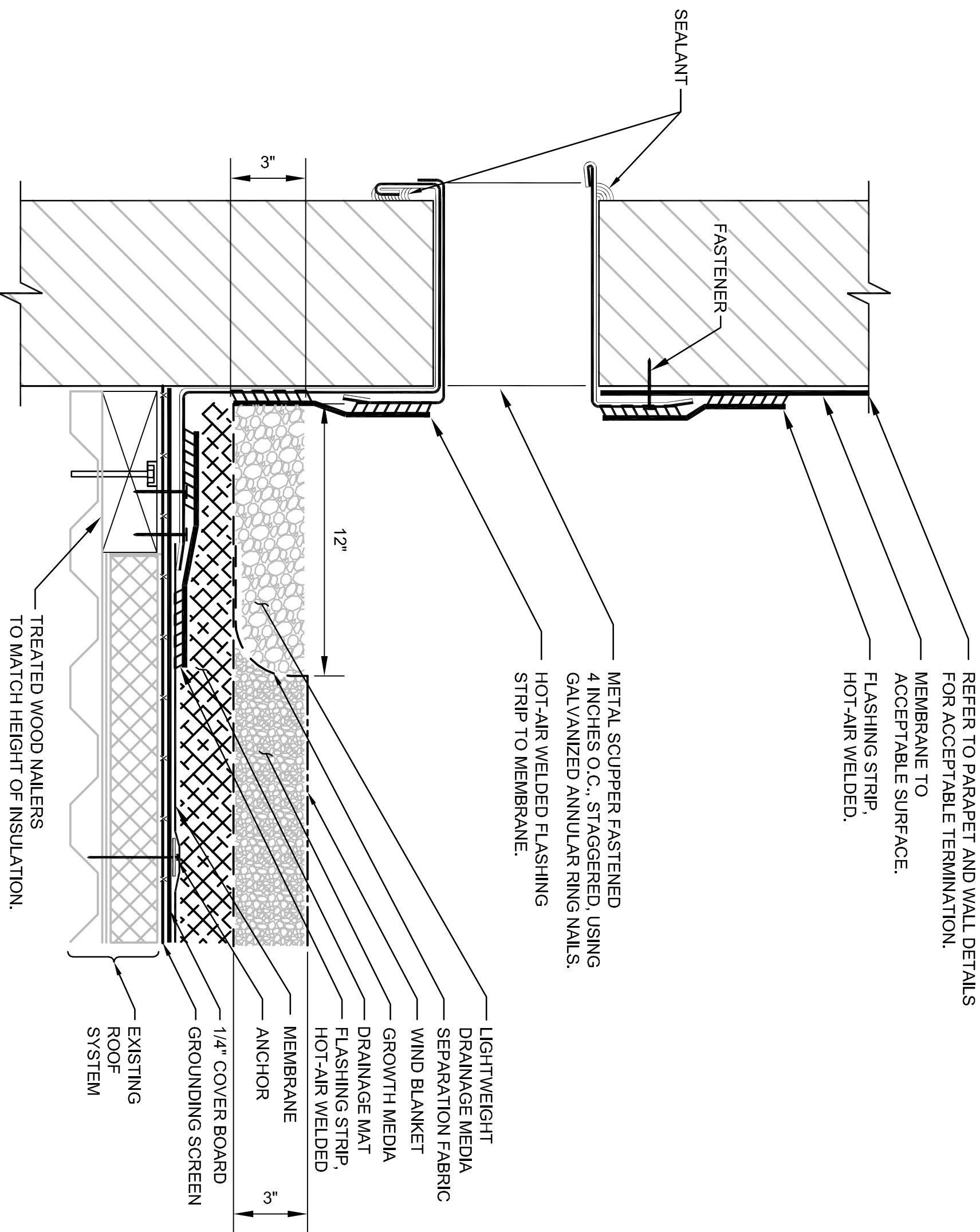
A-1



B PARAPET WALL WITH METAL COPING CAP

NTS

A-1



NOTES:

1. NAILERS SHALL BE SECURELY ANCHORED TO THE DECK TO RESIST A FORCE OF 300 POUNDS PER LINEAR FOOT IN ANY DIRECTION.

A THRU WALL SCUPPER

NTS

A-1

ISSUED FOR BIDDING AND CONSTRUCTION

VERIFY SCALE BARS ONE INCH ON ORIGINAL DRAWING.		DATE JULY 2012		PROJ 381098		DWG A-3		SHEET 6 OF 6	
ARCHITECTURAL		M-12A U.S POST OFFICE AT SALINA 2200 S. SALINA ST. ONONDAGA COUNTY SYRACUSE, NY		430 GENESEE STREET SUITE 400 SYRACUSE, NY 13202		NO NO.		DATE DATE	
DETAILS 2 OF 2		DESCRIPTION REVISION		DR G. HUMPHREYS		CHK A POTTS		APVD GD. MOSURE	
				Z.F. MONGE					

REUSE OF DOCUMENTS: THIS DOCUMENT, AND THE IDEAS AND DESIGNS INCORPORATED HEREIN, AS AN INSTRUMENT OF PROFESSIONAL SERVICE, IS THE PROPERTY OF CH2M HILL AND IS NOT TO BE USED, IN WHOLE OR IN PART, FOR ANY OTHER PROJECT WITHOUT THE WRITTEN AUTHORIZATION OF CH2MHILL.

©CH2M HILL 2004. ALL RIGHTS RESERVED.