



Project:	C.C. Forman Park
Project Owner:	City of Syracuse Parks Dept.
Project Location:	E Genesee St. & Almond St.
Sewershed:	Clinton/Lower MIS
GI Technology:	Landscape Enhancement
Capture Area:	6,800 sq. ft.
Run-off Reduction:	121,000 gal/yr
Year Completed:	2011
Construction Cost:	\$50,000
Prime Contractor:	Ballard Sports

FACT SHEET

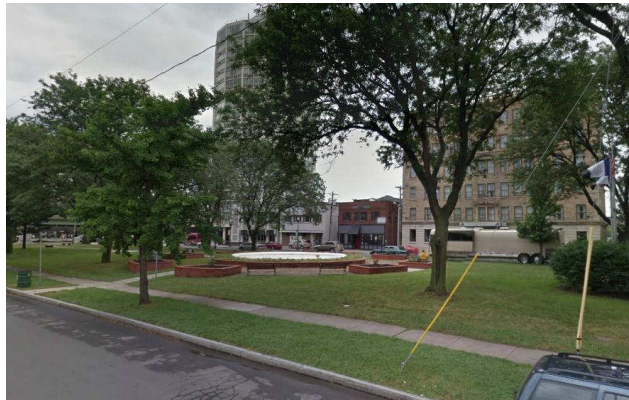
Connective Corridor: Forman Park

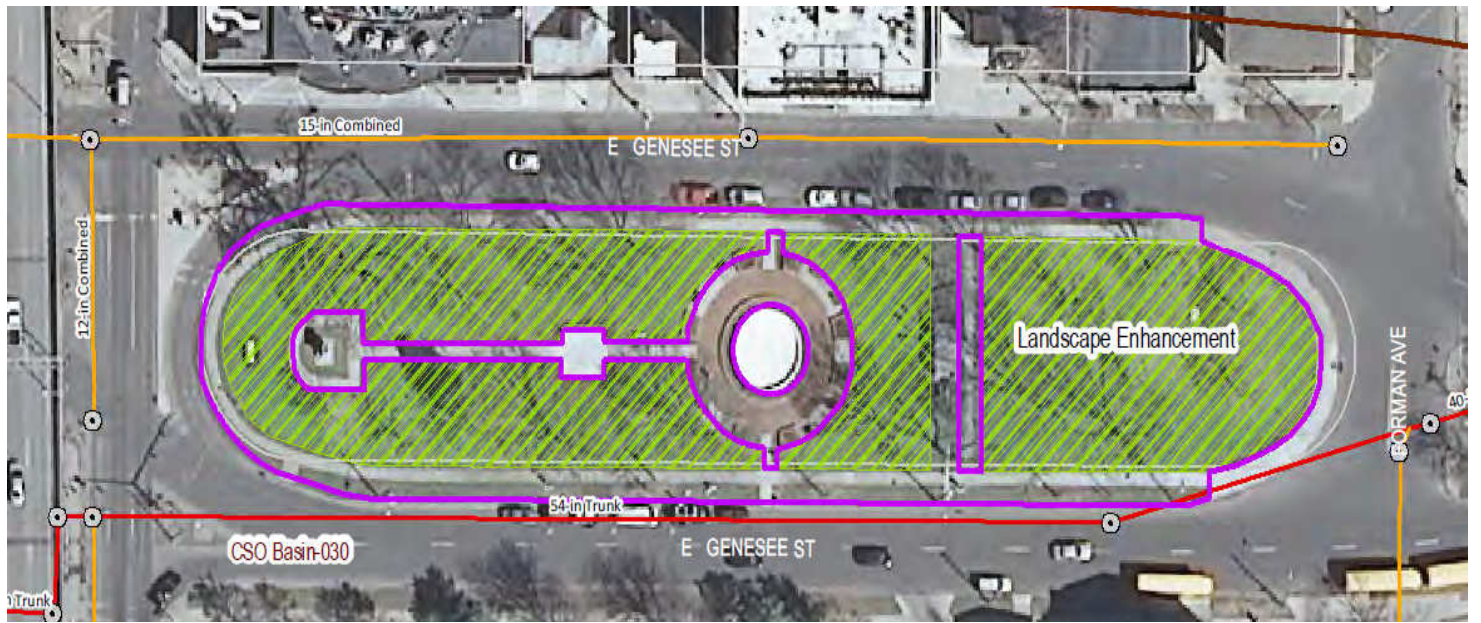
Project Description: The Connective Corridor – Forman Park project is the second of three 2011 Save the Rain projects done in partnership with the City of Syracuse and Syracuse University. The City and University are constructing a corridor between University Hill and Downtown Syracuse and the Save the Rain program has partnered with both to include green infrastructure throughout the corridor. As a whole, the 2011 Connective Corridor Projects will prevent a total of 5.9 million gallons of stormwater from entering the combined sewer system annually.

The Forman Park project consists of enhancing the landscaping in and around the park, while capturing stormwater from within the park. In total, 4,045 shrubs and perennials will be planted as part of this project, servicing 6,800 square feet of drainage area and capturing 119,000 gallons of stormwater annually.



**Forman Park
After Construction (above) &
Before Construction (below)**





Conceptual Rendering of the Connective Corridor – Forman Park Save the Rain Project