



FACT SHEET

SCSD Hughes Magnet School Parking Lot

Project:	Hughes Magnet School
Project Owner:	Syracuse City School Dist.
Project Location:	370 Jamesville Ave
Sewershed:	Midland
GI Technology:	Porous Pavement, Infiltration Bed
Capture Area:	80,000 sq. ft.
Run-off Reduction:	1,504,000 gal/yr
Year Constructed:	2011
Construction Cost:	\$288,000
Prime Contractor:	ACTS II Construction

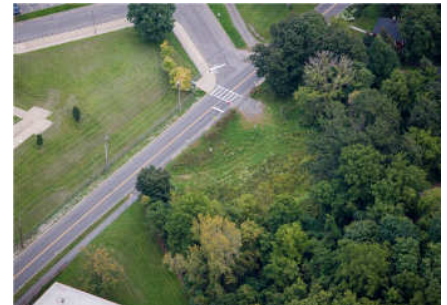
Project Description: The project at Hughes Magnet School involves the construction of a new parking lot that is able to capture stormwater runoff not only from the new construction, but also from the existing parking lot, school roof, and Jamesville Ave. This unique project is able to prevent approximately 1.5 million gallons of stormwater from entering the combined sewer system annually.

The new parking lot will consist of porous asphalt parking stalls and standard asphalt driving lanes. Beneath the entire parking lot is a subsurface infiltration bed that is sized to handle runoff from this large drainage area.

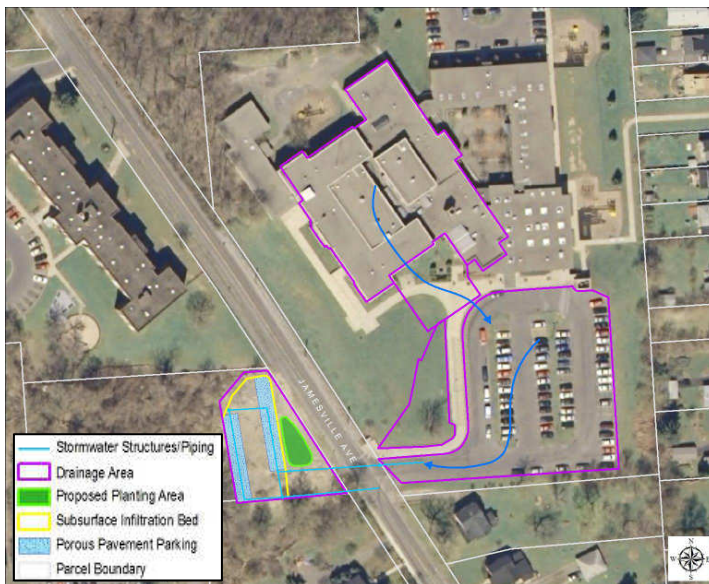
The existing parking lot and roof leader connections to the combined sewer system will be intercepted and re-plumbed into the subsurface infiltration bed in the new parking lot. Also included in this project is a small planting area between the new parking lot and Jamesville Ave. that will handle additional stormwater from surrounding areas.



Tributary Drainage Area



Porous Parking Lot Location before Construction



Conceptual Rendering of Green Project Plans



Porous Lot - Construction Nearing Completion