

Project:	Townsend Median (Phase 2)
Project Owner:	City of Syracuse
Project Location:	S. Townsend St. Median from E. Adams to E. Taylor Street
Sewershed:	Clinton/Lower MIS
GI Technology:	Pavement Removal/ Plantings
Capture Area:	3,000 sq. ft.
Run-off Reduction:	53,000 gal/yr
Year Completed:	2011
Construction Cost:	\$43,000
Prime Contractor:	Davis Wallbridge

FACT SHEET

Townsend Median Retrofit Phase 2

Project Description: The Townsend Median Project, completed in 2011, is a stormwater retrofit project that features the landscape restoration of the existing Townsend Street median. Phase 2 involves the planting of various planting plugs and shrubs along of S. Townsend Street between E. Taylor Street and E. Adams Street.

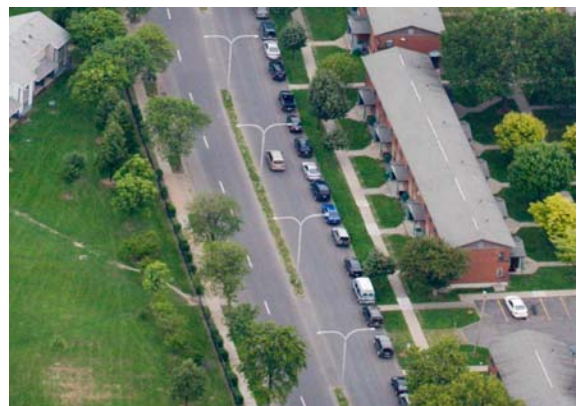
The new median is designed to be below surface grade, allowing stormwater from both sides of S. Townsend Street to drain directly into the median, irrigate new vegetation, and slowly infiltrate. This project is the second Save the Rain project along Townsend Median, with the first spanning the length of the median between E. Genesee and E. Adams Street. The entire Townsend Median project is anticipated to capture approximately 370,000 gallons of stormwater runoff each year.



Aerial View of Townsend Median after Retrofit (Facing North)



Townsend St. Median before Retrofit



Phase 2 Townsend St. Median Plantings