



Project:	Lynch Avenue Infiltration Trench
Project Owner:	City of Syracuse
Project Location:	Lynch Avenue (Russell Place to Fletcher Avenue)
Sewershed:	Midland
CSO:	052
GI Technology:	Underground Infiltration Trench
Capture Area:	22,644 sq. ft.
Runoff Reduction:	398,800 gal/yr
Year Contracted:	2016
Construction Cost:	\$106,251
Prime Contractor:	Marcellus Construction Co., Inc.

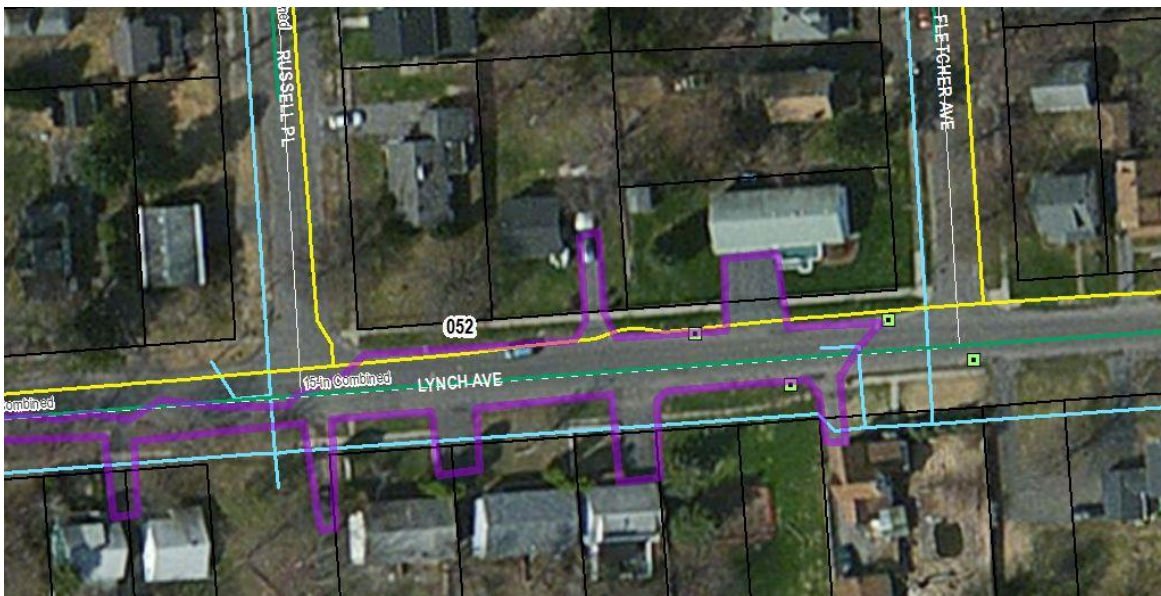
FACT SHEET Lynch Avenue Infiltration Trench

Project Description: The Lynch Avenue Infiltration Trench Project was completed in November 2016 as part of the County's targeted approach to green infrastructure within CSO 052, a sewershed that discharges high volumes during high intensity during rain events.

A four and half foot deep by eight foot wide underground infiltration trench was constructed on Lynch Avenue between Russell Place and Fletcher Avenue. The trench is located on the north half of the street to avoid conflicts with water and sewer utilities on the south. Being completely underground, the infiltration trench system provides a high capture volume without an obtrusive footprint at the surface. Stormwater runoff is conveyed to the infiltration trench via existing and new street catch basins. This project manages a total of 22,644 square feet of impervious drainage area, equating to approximately 398,800 gallons of stormwater runoff capture annually.



Underground Infiltration Trench installed on Lynch Avenue



Drainage Areas (in pink) Captured by Lynch Avenue Road Infiltration Trench Project