

# ONONDAGA COUNTY GREEN INFRASTRUCTURE PROGRAM

## GRAND AVENUE

### SANITARY SEWER ABANDONMENT

### TASK ORDER 2020-001G

#### DRAWING INDEX

GENERAL		
1	G-1	COVER SHEET
2	G-2	ABBREVIATIONS, LEGENDS, AND NOTES
CIVIL		
3	C-1	EXISTING SITE PLAN
4	C-2	DEMOLITION PLAN

PROJECT LOCATION:  
GRAND AVENUE  
BETWEEN VELASKO ROAD AND  
DEPALMA AVENUE



LOCATION MAP  
NOT TO SCALE



#### RECORD DRAWINGS

Revisions Drawn By COLIN O'NEILL Date SEPTEMBER 2020  
THESE RECORD DRAWINGS HAVE BEEN PREPARED, IN PART, ON THE BASIS OF INFORMATION COMPILED BY OTHERS. THEY ARE NOT INTENDED TO REPRESENT IN DETAIL THE EXACT LOCATION, TYPE OF COMPONENT NOR MANNER OF CONSTRUCTION. THE ENGINEER WILL NOT BE RESPONSIBLE FOR ANY ERRORS OR OMISSIONS WHICH HAVE BEEN INCORPORATED INTO THE RECORD DRAWINGS.

NOTE: IT IS A VIOLATION OF THE NEW YORK STATE EDUCATION LAW FOR ANY PERSON TO ALTER THIS DOCUMENT IN ANY WAY, UNLESS ACTING UNDER THE DIRECTION OF A LICENSED PROFESSIONAL ENGINEER. IF A DOCUMENT BEARING THE SEAL OF AN ENGINEER IS ALTERED, THE ALTERING ENGINEER SHALL AFFIX TO THE DOCUMENT THEIR SEAL AND THE NOTATION "ALTERED BY" FOLLOWED BY THEIR SIGNATURE AND THE DATE OF SUCH ALTERATION, AND A SPECIFIC DESCRIPTION OF THE ALTERATION.



NO.	DATE	DSGN	DR	CHK	BY
					APVD

H-90B  
GRAND AVE SEWER ABANDONMENT  
GRAND AVENUE  
SYRACUSE, NY  
ONONDAGA COUNTY

JACOBS  
GENERAL  
COVER SHEET

NO SCALE	
VERIFY SCALE	
BAR IS ONE INCH ON ORIGINAL DRAWING, 0" = 1"	
DATE	MARCH 2020
PROJ	H-90B
DWG	G-1
SHEET	1 OF 4

STATE OF NEW YORK  
EXAMINER FRANCIS MOTT  
2021.17  
LICENSED PROFESSIONAL ENGINEER  
© JACOBS 2020. ALL RIGHTS RESERVED.  
REUSE OF DOCUMENTS: THIS DOCUMENT AND THE IDEAS AND DESIGNS INCORPORATED HEREIN AS AN INSTRUMENT OF PROFESSIONAL SERVICE, IS THE PROPERTY OF JACOBS AND IS NOT TO BE USED, IN WHOLE OR IN PART, FOR ANY OTHER PROJECT WITHOUT THE WRITTEN AUTHORIZATION OF JACOBS.

### GENERAL CONSTRUCTION NOTES:

1. EXISTING TOPOGRAPHY, STRUCTURES, AND SITE FEATURES ARE SHOWN SCREENED AND/OR LIGHT-LINED. NEW FINISH GRADE, STRUCTURES, AND SITE FEATURES ARE SHOWN HEAVY-LINED.
2. PROVIDE TEMPORARY FENCING AS NECESSARY TO MAINTAIN SAFETY AND SECURITY AT ALL TIMES.
3. UNLESS SHOWN, ALL DISTURBED AREAS NOT RECEIVING A HARD SURFACE SHALL BE RESTORED WITH GRASS AS SPECIFIED.
- A 4. NOTIFY DIG SAFELY NEW YORK 811 AT LEAST 72 HOURS PRIOR TO CONSTRUCTION.
5. CONTRACTOR SHALL PREPARE A TRAFFIC CONTROL PLAN FOR VEHICULAR AND PEDESTRIAN TRAFFIC IN ACCORDANCE WITH THE FEDERAL HIGHWAY ADMINISTRATION MANUAL ON UNIFORM TRAFFIC CONTROL DEVICES FOR STREETS AND HIGHWAYS (MUTCD). ALL TRAFFIC CONTROL DEVICES SHALL REMAIN IN PLACE AND PROPERLY MAINTAINED FOR THE DURATION OF THE WORK.
6. UNLESS OTHERWISE APPROVED BY THE CITY OF SYRACUSE, PEDESTRIAN AND VEHICULAR ACCESS TO WALKWAYS, BUSINESSES, AND DRIVEWAYS SHALL BE MAINTAINED AT ALL TIMES.
7. THE CONTRACTOR SHALL APPLY FOR ALL REQUIRED PERMITS AND PAY ALL REQUIRED FEES BY GOVERNING AGENCIES HAVING JURISDICTION OVER THE FACILITIES AND NATURAL FEATURES FOUND ON THE SITE.
8. THE CONTRACTOR SHALL ADHERE TO ALL OCCUPATIONAL SAFETY AND HEALTH ADMINISTRATION (OSHA), STATE AND LOCAL SAFETY REGULATIONS.
9. COMPLY WITH ALL LOCAL, STATE AND FEDERAL REQUIREMENTS REGARDING MATERIALS, METHODS OF WORK AND DISPOSAL OF EXCESS AND WASTE MATERIALS.
10. BURNING OF MATERIALS OF ANY DESCRIPTION ON THE SITE IS PROHIBITED.
11. THE USE OF EXPLOSIVES OF ANY DESCRIPTION ON THE SITE IS PROHIBITED.
- B 12. LONG LEAD AND SCARCE MATERIALS SHALL BE ORDERED IN A TIMELY MANNER TO PREVENT AVOIDABLE CONSTRUCTION DELAYS.
- C 13. THE CONTRACTOR IS RESPONSIBLE FOR ALL DAMAGE CAUSED BY CONSTRUCTION TO EXISTING UTILITIES AND FACILITIES WHICH ARE NOT INCLUDED AS PART OF THE INTENDED WORK. THE CONTRACTOR SHALL REPAIR, RESTORE AND/OR REPLACE ALL DAMAGE TO THE SATISFACTION OF ENGINEER AT NO ADDITIONAL COST TO THE OWNER.
- D

### SITE PROTECTION NOTES:

1. THE CONTRACTOR SHALL COORDINATE WITH ANY AND ALL CONTRACTORS PERFORMING WORK ON THIS OR IMMEDIATELY ADJACENT TO THIS JOB SITE.
2. THE CONTRACTOR SHALL AT THEIR OWN EXPENSE, RESTORE LAWNS, DRIVEWAYS, FENCES, SIGNS AND OTHER PUBLIC AND PRIVATE PROPERTY DAMAGED OR REMOVED TO AT LEAST AS GOOD A CONDITION AS BEFORE BEING DISRUPTED.
3. EXCAVATED SPOILS NOT DESIGNATED FOR USE ON SITE SHALL BE REMOVED AT THE END OF EACH WORK DAY.
4. ALL BACKFILL MATERIAL STORED ON SITE SHALL BE COVERED TO PREVENT DUST AND MOISTURE INCREASE.
5. ALL TRUCKS ENTERING AND LEAVING THE SITE SHALL BE COVERED BY LAW TO REDUCE DUST AND ODOR. ALL MATERIALS (HAZARDOUS) SHALL BE LOCKED IN APPROPRIATE STORAGE UNITS.
6. CONTRACTOR SHALL MAINTAIN A CLEAN WORK SITE AT ALL TIMES. AT THE END OF THE WORK DAY ALL EQUIPMENT AND MATERIALS SHALL BE STORED IN THE DESIGNATED STAGING AREA. ALL SOIL, DUST AND MUD SHALL BE REMOVED FROM THE PROJECT AREA AND OUTSIDE THE PROJECT AREA. AT THE END OF THE DAY, TIRES OF CONSTRUCTION VEHICLES SHALL BE CLEANED OF SOIL AND MUD BEFORE BEING ALLOWED ON CITY STREETS. ANY SOIL OR MUD DEPOSITED ON CITY STREETS BY CONSTRUCTION VEHICLES SHALL BE REMOVED IMMEDIATELY.
7. CONTRACTOR SHALL PRESERVE AND MAINTAIN ALL EXISTING FACILITIES INCLUDING SIDEWALKS, SURVEY MONUMENTS, LIGHTING, CURBING AND PAVEMENT WITHIN THE PROJECT LIMITS.
8. CONTRACTOR SHALL REMOVE, OR PROPERLY CONTAINERIZE UNNECESSARY CONSTRUCTION DEBRIS AT THE END OF EACH WORK DAY.
9. DUST CONTROL MEASURES SHALL BE USED ON CONSTRUCTION ROADS, ACCESS POINTS, AND OTHER DISTURBED AREAS. VEGETATION SHOULD BE LEFT WHERE PRACTICAL, AND TEMPORARY OR PERMANENT STABILIZATION MEASURES SHALL BE INSTALLED. NON-GRAVEL DRIVING AREAS SHALL BE SPRAYED WITH WATER UNTIL WET, OR GEOTEXTILE OR STONE MAY BE PLACED ON THE DRIVING SURFACE TO REDUCE DUST.

### UTILITY NOTES:

1. THE APPROXIMATE LOCATION OF THE UTILITIES ARE SHOWN ON THE PLANS. THE CONTRACTOR SHALL VERIFY THE TRUE LOCATION BEFORE COMMENCING WORK AND NOTIFY THE ENGINEER OF ANY POTENTIAL CONFLICTS OR DISCREPANCIES. BEFORE ANY PIPE IS PLACED, THE CONTRACTOR SHALL UNCOVER ALL UTILITIES AT PIPE CROSSINGS TO ENABLE THE ENGINEER TO VERIFY THE PROPOSED PIPE WITH GRADES SHOWN ON THE PLANS IS NOT OBSTRUCTED BY EXISTING UTILITIES. THE COST OF THIS WORK SHALL BE INCLUDED IN THE PRICE BID FOR VARIOUS ITEMS IN THE CONTRACT.
2. THE CONTRACTOR SHALL BE RESPONSIBLE FOR THE PROTECTION OF ALL UTILITIES ENCOUNTERED IN THIS WORK. WHERE NECESSARY, THE CONTRACTOR SHALL PROVIDE TIMBER, OR OTHER APPROVED MATERIALS AND SECURELY BRACE AND PROTECT THESE UTILITIES. THE COST OF THIS WORK SHALL BE INCLUDED IN THE PRICE BID FOR VARIOUS ITEMS IN THE CONTRACT.
3. THE DEGREE OF ACCURACY FOR ALL UNDERGROUND UTILITIES WITHIN THE PROJECT LIMITS IS QUALITY LEVEL C/D.

### EROSION AND SEDIMENT CONTROL NOTES:

1. EROSION CONTROLS MUST BE CONSTRUCTED, STABILIZED, AND FUNCTIONAL BEFORE SITE DISTURBANCE BEGINS WITHIN THE TRIBUTARY AREAS OF THOSE CONTROLS.
2. CONTRACTOR SHALL TAKE ALL OTHER MEASURES TO POSITIVELY PRECLUDE ERODED MATERIALS FROM LEAVING THE SITE.
3. AFTER FINAL SITE STABILIZATION HAS BEEN ACHIEVED, TEMPORARY EROSION CONTROLS MUST BE REMOVED AS APPROVED BY THE ENGINEER. AREAS DISTURBED DURING REMOVAL OF THE CONTROLS MUST BE STABILIZED IMMEDIATELY.
4. PROVIDE EROSION AND SEDIMENT CONTROL MEASURES WHERE AND WHEN APPROPRIATE AS PER THE NEW YORK STATE STANDARDS AND SPECIFICATIONS FOR EROSION AND SEDIMENT CONTROL, LATEST EDITION. PROTECT EXISTING SITE FEATURES UNLESS OTHERWISE NOTED. CONSULT ENGINEER PRIOR TO STORMWATER MANAGEMENT PRACTICE INSTALLATION.
5. UNTIL THE SITE IS STABILIZED, ALL EROSION CONTROLS MUST BE MAINTAINED PROPERLY, MAINTENANCE MUST INCLUDE INSPECTIONS OF ALL EROSION CONTROLS AFTER EACH RUNOFF EVENT AND ON A WEEKLY BASIS. ALL PREVENTATIVE AND REMEDIAL MAINTENANCE WORK, INCLUDING CLEAN OUT, REPAIR, REPLACEMENT, RE-GRADING, RE-SEEDING, RE-MULCHING AND RE-NETTING, MUST BE PERFORMED IMMEDIATELY. IF EROSION CONTROLS FAIL TO PERFORM AS EXPECTED, REPLACEMENT CONTROLS, OR MODIFICATIONS OF THOSE INSTALLED WILL BE REQUIRED.
6. MAINTENANCE AND REPAIR OF ALL EQUIPMENT AND VEHICLES INVOLVING OIL CHANGES, HYDRAULIC SYSTEM AND FUEL TANK DRAIN DOWN, DEGREASING OPERATIONS AND OTHER ACTIVITIES THAT MAY RESULT IN THE ACCIDENTAL RELEASE OF CONTAMINANTS MUST BE CONDUCTED OFF-SITE. ACCIDENTAL SPILLS MUST BE CLEANED UP IMMEDIATELY AND CONTAMINANTS DISPOSED OF PROPERLY.

### SURVEY NOTES:

1. SURVEY WAS PERFORMED BY BRYANT ASSOCIATES, P.C. IN JANUARY 2020.
2. HORIZONTAL DATUM IS ON NAD 83.
3. VERTICAL DATUM IS ON NAVD 88.
4. CITY OF SYRACUSE SURVEY MONUMENTS SHALL NOT BE DISTURBED OR DESTROYED. IF THERE IS A CONFLICT OR A SURVEY MONUMENT IS WITHIN FIVE FEET OF CONSTRUCTION THE CITY OF SYRACUSE, DEPARTMENT OF ENGINEERING MUST BE CONTACTED AT (315)-448-8207 BEFORE ANY DEMOLITION OR CONSTRUCTION BEGINS.
5. UNDERGROUND UTILITIES SHOWN HEREON WERE PLOTTED FROM VISIBLE EVIDENCE LOCATED AT THE TIME OF THE FIELD SURVEY. THE LOCATIONS OF ALL UNDERGROUND UTILITIES SHOULD BE STAKED BY THE RESPECTIVE UTILITY COMPANY PRIOR TO ANY CONSTRUCTION.

### RECORD DRAWINGS

Revisions Drawn By COLIN O'NEILL Date SEPTEMBER 2020

THESE RECORD DRAWINGS HAVE BEEN PREPARED, IN PART, ON THE BASIS OF INFORMATION COMPILED BY OTHERS. THEY ARE NOT INTENDED TO REPRESENT IN DETAIL THE EXACT LOCATION, TYPE OF COMPONENT NOR MANNER OF CONSTRUCTION. THE ENGINEER WILL NOT BE RESPONSIBLE FOR ANY ERRORS OR OMISSIONS WHICH HAVE BEEN INCORPORATED INTO THE RECORD DRAWINGS.



NO.	DATE	DR	APVD	BY

H-90B  
 GRAND AVE SEWER ABANDONMENT  
 GRAND AVENUE  
 SYRACUSE, NY  
 ONONDAGA COUNTY

ABBREVIATIONS, LEGENDS, & NOTES

NO SCALE
VERIFY SCALE
BAR IS ONE INCH ON ORIGINAL DRAWING. 1" = 10'
DATE MARCH 2020
PROJ H-90B
DWG G-2
SHEET 2 OF 4

REUSE OF DOCUMENTS: THIS DOCUMENT AND THE IDEAS AND DESIGNS INCORPORATED HEREIN AS AN INSTRUMENT OF PROFESSIONAL SERVICE, IS THE PROPERTY OF JACOBS AND IS NOT TO BE USED, IN WHOLE OR IN PART, FOR ANY OTHER PROJECT WITHOUT THE WRITTEN AUTHORIZATION OF JACOBS. © JACOBS 2020. ALL RIGHTS RESERVED.

1

2

3

4

5

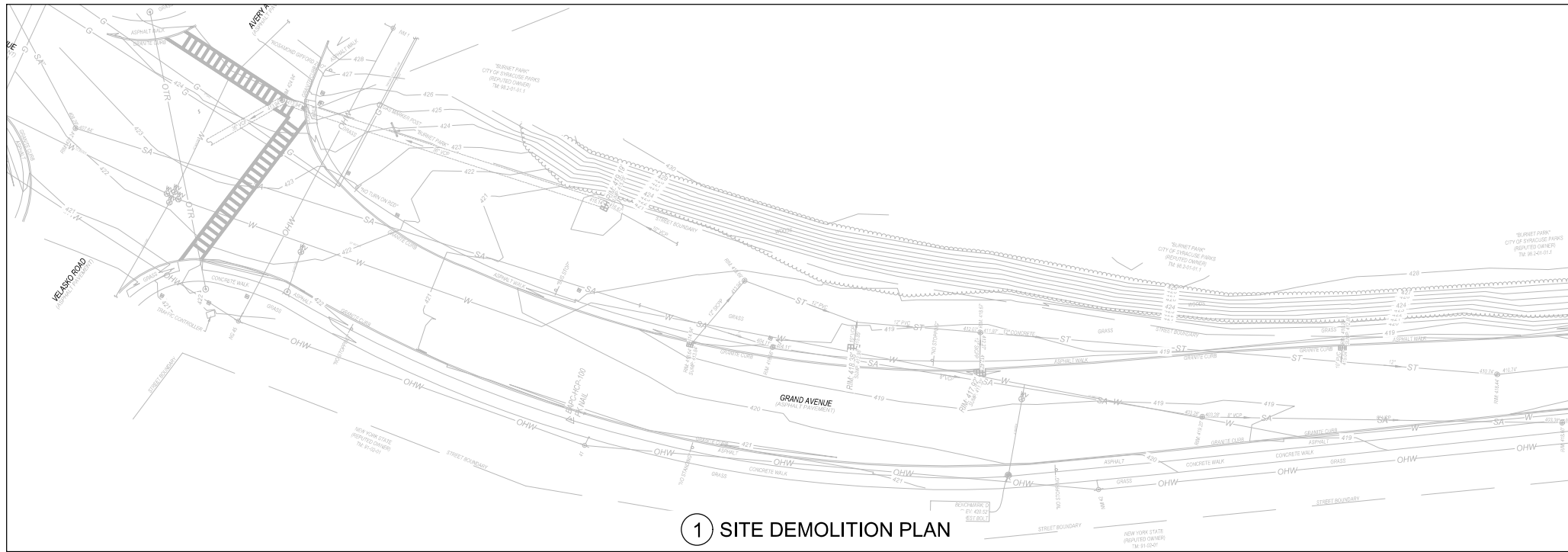
6

A

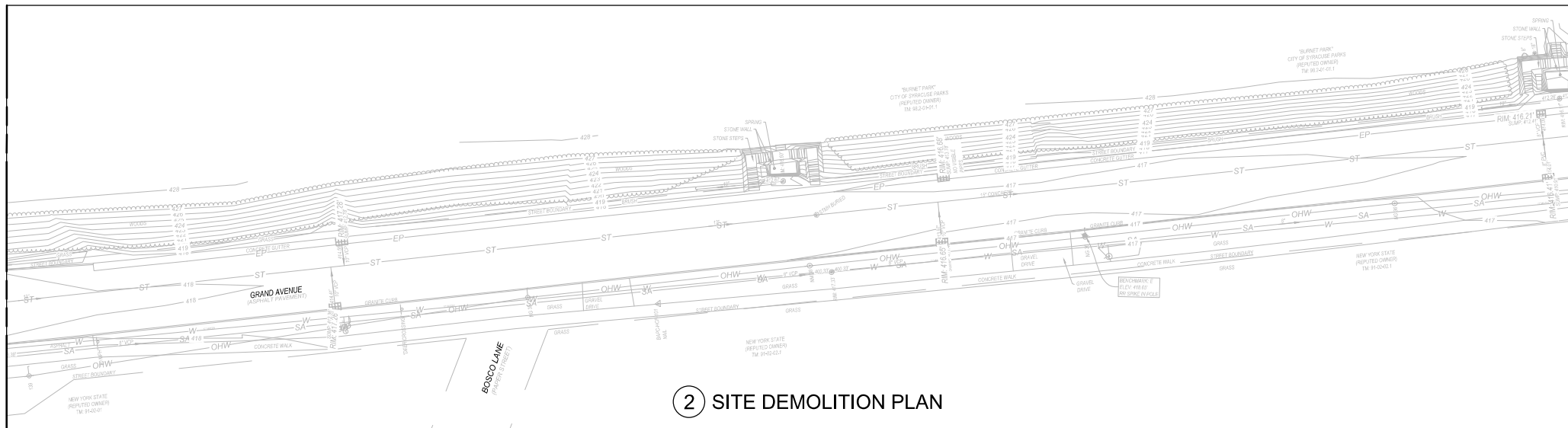
B

C

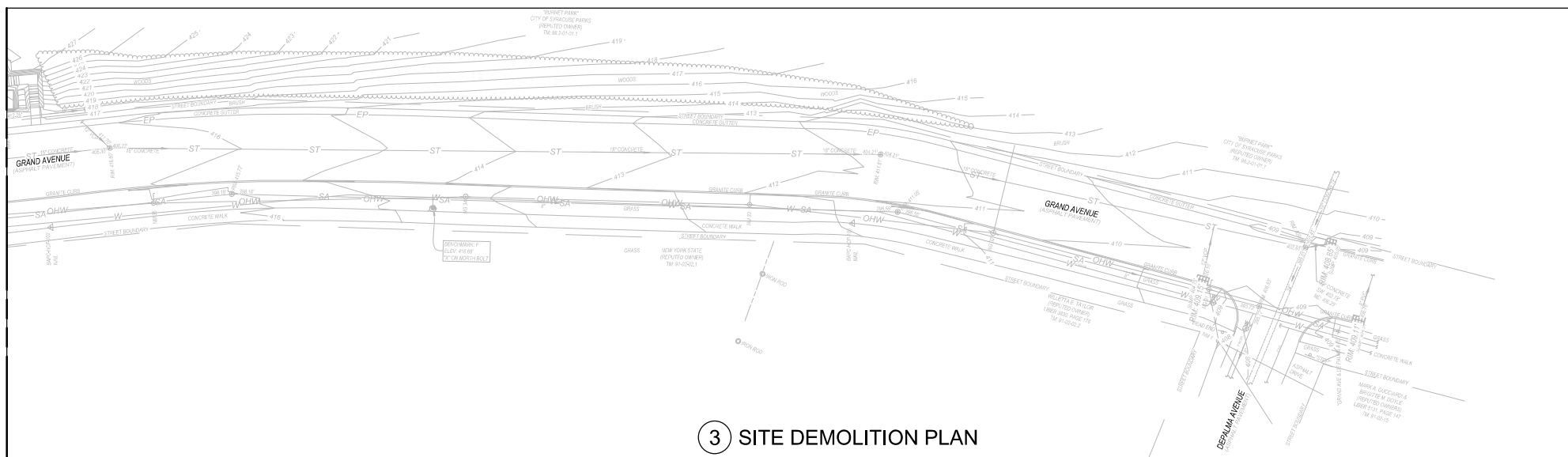
D



MATCHLINE SEE BELOW FOR CONTINUATION



MATCHLINE SEE BELOW FOR CONTINUATION



MATCHLINE SEE ABOVE FOR CONTINUATION

MATCHLINE SEE ABOVE FOR CONTINUATION

### RECORD DRAWINGS

Revisions Drawn By COLIN O'NEILL Date SEPTEMBER 2020  
 THESE RECORD DRAWINGS HAVE BEEN PREPARED, IN PART, ON THE BASIS OF INFORMATION COMPILED BY OTHERS. THEY ARE NOT INTENDED TO REPRESENT IN DETAIL THE EXACT LOCATION, TYPE OF COMPONENT NOR MANNER OF CONSTRUCTION. THE ENGINEER WILL NOT BE RESPONSIBLE FOR ANY ERRORS OR OMISSIONS WHICH HAVE BEEN INCORPORATED INTO THE RECORD DRAWINGS.



NO.	DATE	DR	REVISION	Z. MONGE	
				CHK	BY

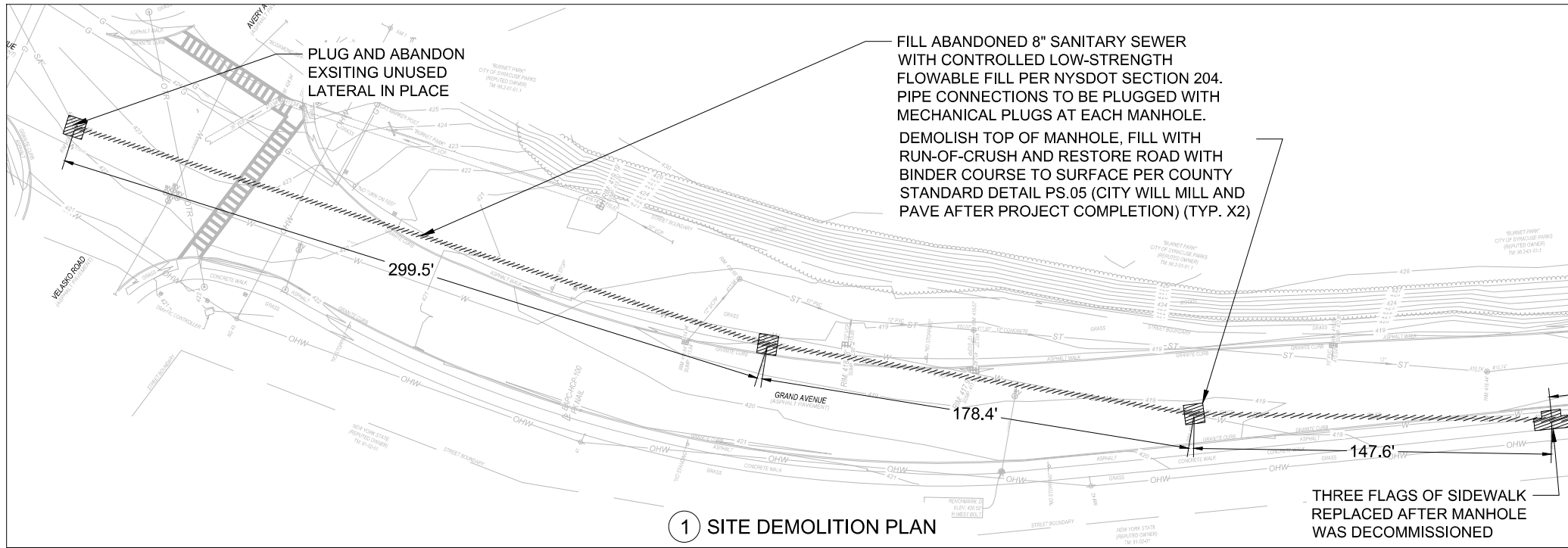
H-90B  
 GRAND AVE SEWER ABANDONMENT  
 GRAND AVENUE  
 SYRACUSE, NY  
 ONONDAGA COUNTY

GENERAL  
 EXISTING SITE PLAN

NO SCALE
VERIFY SCALE
BAR IS ONE INCH ON ORIGINAL DRAWING, 0"
DATE MARCH 2020
PROJ H-90B
DWG C-1
SHEET 3 OF 4

REUSE OF DOCUMENTS: THIS DOCUMENT AND THE IDEAS AND DESIGNS INCORPORATED HEREIN AS AN INSTRUMENT OF PROFESSIONAL SERVICE, IS THE PROPERTY OF JACOBS AND IS NOT TO BE USED, IN WHOLE OR IN PART, FOR ANY OTHER PROJECT WITHOUT THE WRITTEN AUTHORIZATION OF JACOBS. © JACOBS 2020. ALL RIGHTS RESERVED.



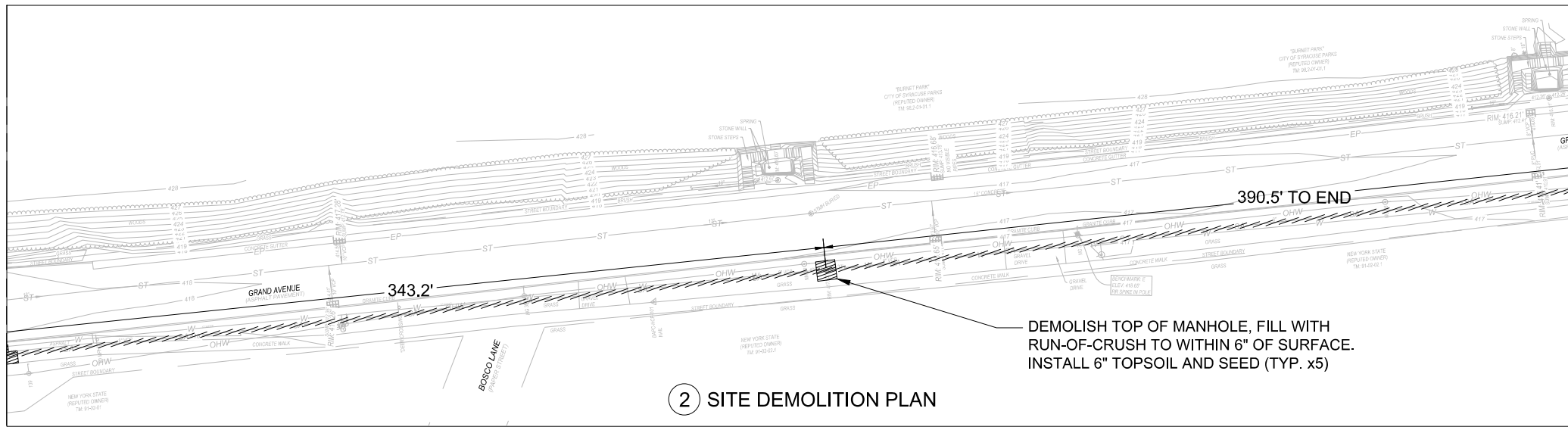


1 SITE DEMOLITION PLAN

MATCHLINE SEE BELOW FOR CONTINUATION

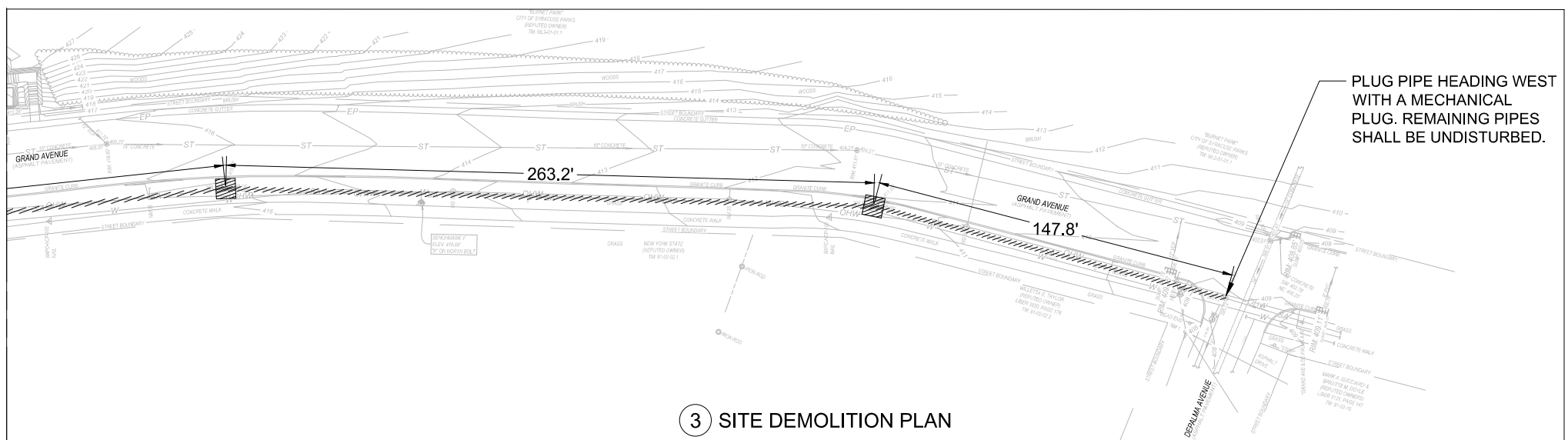
**NOTES:**

- 1. TOTAL LINEAR FOOTAGE OF 8" PIPE TO BE FILLED WITH A CONTROLLED LOW-STRENGTH FLOWABLE FILL IS APPROXIMATELY 1,770 LF.



2 SITE DEMOLITION PLAN

MATCHLINE SEE BELOW FOR CONTINUATION



3 SITE DEMOLITION PLAN

MATCHLINE SEE ABOVE FOR CONTINUATION

MATCHLINE SEE ABOVE FOR CONTINUATION

**RECORD DRAWINGS**

Revisions Drawn By COLIN O'NEILL Date SEPTEMBER 2020

THESE RECORD DRAWINGS HAVE BEEN PREPARED, IN PART, ON THE BASIS OF INFORMATION COMPILED BY OTHERS. THEY ARE NOT INTENDED TO REPRESENT IN DETAIL THE EXACT LOCATION, TYPE OF COMPONENT NOR MANNER OF CONSTRUCTION. THE ENGINEER WILL NOT BE RESPONSIBLE FOR ANY ERRORS OR OMISSIONS WHICH HAVE BEEN INCORPORATED INTO THE RECORD DRAWINGS.



NO.	DATE	DR	REVISION	CHK	BY	APVD

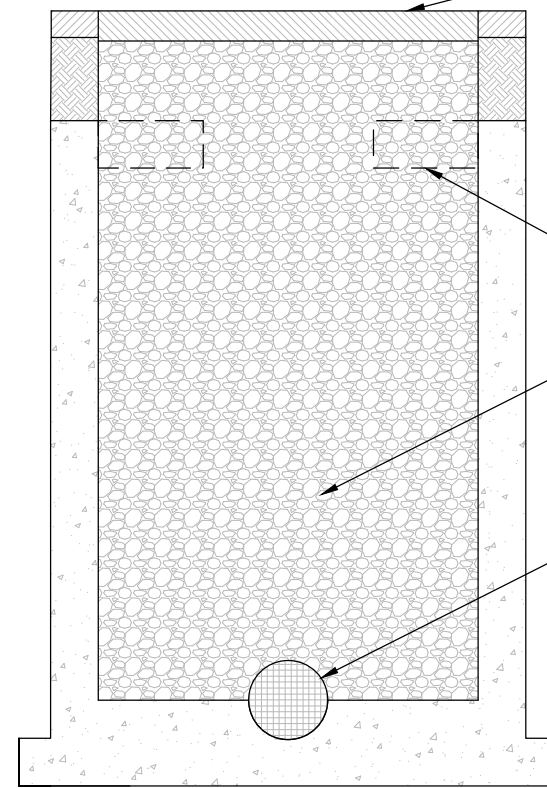
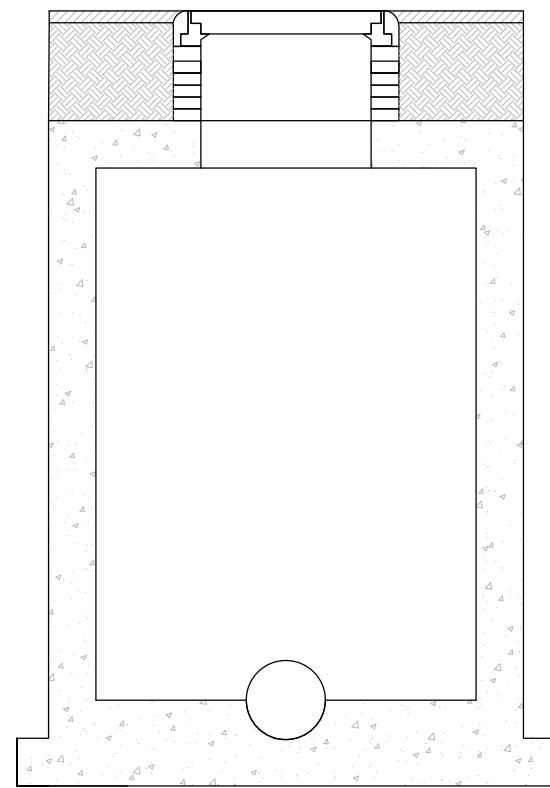
H-90B  
 GRAND AVE SEWER ABANDONMENT  
 GRAND AVENUE  
 SYRACUSE, NY  
 ONONDAGA COUNTY

GENERAL  
 SITE DEMOLITION PLAN

NO SCALE
VERIFY SCALE
BAR IS ONE INCH ON ORIGINAL DRAWING.
DATE MARCH 2020
PROJ H-90B
DWG C-2
SHEET 4 OF 4

REUSE OF DOCUMENTS: THIS DOCUMENT AND THE IDEAS AND DESIGNS INCORPORATED HEREIN AS AN INSTRUMENT OF PROFESSIONAL SERVICE, IS THE PROPERTY OF JACOBS AND IS NOT TO BE USED, IN WHOLE OR IN PART, FOR ANY OTHER PROJECT WITHOUT THE WRITTEN AUTHORIZATION OF JACOBS. © JACOBS 2020. ALL RIGHTS RESERVED.

A  
B  
C  
D



RESTORE ROAD OVER  
MANHOLE PER COUNTY  
STANDARD DETAILS

DEMOLISH THE TOP OF  
MANHOLE TO ALLOW  
FOR BACKFILL

FILL MANHOLE WITH  
RUN-OF-CRUSH GRAVEL,  
INSTALL IN 18" LIFTS

INSTALL MECHANICAL  
PLUG IN EACH PIPE  
LEAVING THE MANHOLE

### 1 MANHOLE DEMOLITION DETAIL

## RECORD DRAWINGS

Revisions Drawn By COLIN O'NEILL Date SEPTEMBER 2020

THESE RECORD DRAWINGS HAVE BEEN PREPARED, IN PART, ON THE BASIS OF INFORMATION COMPILED BY OTHERS. THEY ARE NOT INTENDED TO REPRESENT IN DETAIL THE EXACT LOCATION, TYPE OF COMPONENT NOR MANNER OF CONSTRUCTION. THE ENGINEER WILL NOT BE RESPONSIBLE FOR ANY ERRORS OR OMISSIONS WHICH HAVE BEEN INCORPORATED INTO THE RECORD DRAWINGS.



NO.	DATE	DR	CHK	BY

H-90B  
 GRAND AVE SEWER ABANDONMENT  
 GRAND AVENUE  
 SYRACUSE, NY  
 ONONDAGA COUNTY

**JACOBS**  
 GENERAL  
 DETAILS

NO SCALE
VERIFY SCALE
BAR IS ONE INCH ON ORIGINAL DRAWING.
DATE MARCH 2020
PROJ H-90B
DWG C-3
SHEET 5 OF 5

REUSE OF DOCUMENTS: THIS DOCUMENT AND THE IDEAS AND DESIGNS INCORPORATED HEREIN AS AN INSTRUMENT OF PROFESSIONAL SERVICE, IS THE PROPERTY OF JACOBS AND IS NOT TO BE USED, IN WHOLE OR IN PART, FOR ANY OTHER PROJECT WITHOUT THE WRITTEN AUTHORIZATION OF JACOBS. © JACOBS 2020. ALL RIGHTS RESERVED.