

ABBREVIATIONS

CB	CATCH BASIN
CONC	CONCRETE
DIA	DIAMETER
DND	DO NOT DISTURB
DP	DEEP PLUGS
DWG	DRAWING
EL	ELEVATION
EXST	EXISTING
FT	FOOT, FEET
FH	FIRE HYDRANT
G	NATURAL GAS
HDPE	HIGH-DENSITY POLYETHYLENE
HT	HEIGHT
INVT	INVERT
MAX	MAXIMUM
MH	MANHOLE
MIN	MINIMUM
No.	NUMBER
NTS	NOT TO SCALE
NYS DOT	NEW YORK STATE DEPARTMENT OF TRANSPORTATION
O.C.	ON CENTER
PVC	POLYVINYL CHLORIDE
R/W	RIGHT-OF-WAY
R&R	REMOVE AND REPLACE
RCP	REINFORCED CONCRETE PIPE
R.O.C.	RUN-OF-CRUSHER
SAN	SANITARY
ST	STORM DRAIN
TC	TOP OF CASTING
TOC	TOP OF CURB
TYP	TYPICAL
UG	UNDERGROUND
VERT	VERTICAL
W	POTABLE WATER

LEGEND

	CATCH BASIN
	CLEAN OUT
	BERM
	PERF PIPE
	SOLID PIPE

SURVEY NOTES:

- COORDINATES AND NORTH ORIENTATION SHOWN HEREON ARE REFERENCED TO THE NEW YORK STATE PLANE COORDINATE SYSTEM, CENTRAL ZONE, TRANSVERSE MERCATOR PROJECTION, NAD 83/96 USING GPS PROCEDURES AND THE NEW YORK STATE DOT CORS NETWORK.
- ELEVATIONS SHOWN HEREON ARE REFERENCED TO THE NORTH AMERICAN VERTICAL DATUM OF 1988 USING GPS PROCEDURES.
- UNDERGROUND UTILITIES SHOWN HEREON WERE PLOTTED FROM FIELD LOCATIONS, VISIBLE AT THE TIME OF WORK, AND UTILITY COMPANY RECORD DRAWINGS. THE LOCATIONS OF ALL UNDERGROUND UTILITIES SHOULD BE STAKED BY THE RESPECTIVE UTILITY COMPANY PRIOR TO ANY CONSTRUCTION.
- THE LOCATIONS OF STREET RIGHT-OF-WAY LINES ARE APPROXIMATE AND WERE PLOTTED FOR GRAPHICAL REPRESENTATION ONLY USING TAX MAP INFORMATION AND THE CITY OF SYRACUSE RIGHT-OF-WAY PLAT MAPS. NO TITLE DOCUMENTS WERE PROVIDED OR REVIEWED AT THE TIME OF THIS SURVEY.
- LOCATE, PROJECT AND MAINTAIN ALL EXISTING CITY OF SYRACUSE SURVEY MONUMENTS AT ALL TIMES DURING CONSTRUCTION. MONUMENTS SHALL NOT BE DISTURBED OR DAMAGED. INQUIRES REGARDING SURVEY MONUMENTS SHALL BE DIRECTED TO THE CITY OF SYRACUSE DEPARTMENT OF ENGINEERING, MAPPING DIVISION AT (315)-0448-8200.

GENERAL NOTES:

- THIS IS A STANDARD LEGEND SHEET. THEREFORE, NOT ALL OF THE INFORMATION SHOWN MAY BE USED ON THIS PROJECT.

GENERAL CONSTRUCTION NOTES:

- EXISTING TOPOGRAPHY, STRUCTURES, AND SITE FEATURES ARE SHOWN SCREENED AND/OR LIGHT-LINED. NEW FINISH GRADE, STRUCTURES, AND SITE FEATURES ARE SHOWN HEAVY-LINED.
- PROVIDE TEMPORARY FENCING AS NECESSARY TO MAINTAIN SECURITY AT ALL TIMES.
- ELEVATIONS GIVEN ARE TO FINISH GRADE UNLESS OTHERWISE SHOWN.
- UNLESS SHOWN ON THE LANDSCAPING PLANS, ALL DISTURBED AREAS NOT RECEIVING A HARD SURFACE SHALL BE COVERED WITH GRASS.
- PROVIDE EROSION AND SEDIMENT CONTROL MEASURES WHERE AND WHEN APPROPRIATE AS PER THE NEW YORK STATE STANDARDS AND SPECIFICATIONS FOR EROSION AND SEDIMENT CONTROL (AUGUST 2005, OR LATEST EDITION). PROTECT EXISTING SITE FEATURES UNLESS OTHERWISE NOTED. CONSULT ENGINEER PRIOR TO INFILTRATION BED INSTALLATION.
- CONTRACTOR SHALL TAKE ALL OTHER MEASURES TO POSITIVELY PRECLUDE EROSION MATERIALS FROM LEAVING THE SITE. CONTRACTOR TO SUBMIT EROSION CONTROL PLAN.
- EROSION CONTROLS MUST BE CONSTRUCTED, STABILIZED, AND FUNCTIONAL BEFORE SITE DISTURBANCE BEGINS WITHIN THE TRIBUTARY AREAS OF THOSE CONTROLS.
- AFTER FINAL SITE STABILIZATION HAS BEEN ACHIEVED, TEMPORARY EROSION CONTROLS MUST BE REMOVED. AREAS DISTURBED DURING REMOVAL OF THE CONTROLS MUST BE STABILIZED IMMEDIATELY.
- UNTIL THE SITE IS STABILIZED, ALL EROSION CONTROLS MUST BE MAINTAINED PROPERLY. MAINTENANCE MUST INCLUDE INSPECTIONS OF ALL EROSION CONTROLS AFTER EACH RUNOFF EVENT AND ON A WEEKLY BASIS. ALL PREVENTATIVE AND REMEDIAL MAINTENANCE WORK, INCLUDING CLEAN OUT, REPAIR, REPLACEMENT, RE-GRADING, RE-SEEDING, RE-MULCHING AND RE-NETTING, MUST BE PERFORMED IMMEDIATELY. IF EROSION CONTROLS FAIL TO PERFORM AS EXPECTED, REPLACEMENT CONTROLS, OR MODIFICATIONS OF THOSE INSTALLED WILL BE REQUIRED.
- PROTECT INFILTRATION BED AND BIORETENTION SUBGRADE FROM SEDIMENT DEPOSITION AND/OR COMPACTION DURING CONSTRUCTION. DO NOT ALLOW CONSTRUCTION VEHICLES TO TREAD ON THE INFILTRATION BED AND BIORETENTION SUBGRADE.
- CONTRACTOR SHALL FOLLOW INFILTRATION BED, BIORETENTION AND DRAINAGE CONTROL REQUIREMENTS AS SPECIFIED BY ENGINEER.
- NOTIFY DIG SAFELY NEW YORK AT LEAST 72 HOURS PRIOR TO CONSTRUCTION.
- IMMEDIATELY FOLLOWING CONSTRUCTION, RETURN ALL EXISTING IMPROVEMENTS TO PRE-CONSTRUCTION CONDITIONS.
- AGGREGATE FOR INFILTRATION BED AND BIORETENTION SHALL BE CLEAN-WASHED PRIOR TO PLACEMENT.
- MAINTAIN LOOSE AND UNDISTURBED STORMWATER INFILTRATION BED SUBGRADE. SCARIFY TOP 6 INCHES. DO NOT ALLOW CONSTRUCTION EQUIPMENT ON TRENCH BOTTOM SURFACE.
- VERIFY ALL EXISTING UTILITIES AND OTHER IMPROVEMENTS PRIOR TO START OF WORK AND IMMEDIATELY NOTIFY ENGINEER OF POTENTIAL CONFLICTS WITH PROPOSED WORK.
- PROTECT EXISTING TREES DURING CONSTRUCTION.
- WHEN ENCOUNTERED WITHIN THE REQUIRED STORMWATER FACILITY EXCAVATION, CONTRACTOR SHALL WRAP EXISTING UTILITIES WITH 30 MIL GEOMEMBRANE SHEETING AND SECURE WITH PVC TAPE AT 2'-0" O.C (MAX) OVERLAP SHEETING BY 2'-0" (MIN). EXTEND SHEETING A MINIMUM OF 1/4 OF THE PIPE CIRCUMFERENCE AND ENSURE OVERLAP RUNS ALONG THE CROWN OF PIPE. SLEEVES AND CASTINGS SHALL BE DRY AND MOISTURE FREE BEFORE SEALING.
- INSTALL TWO-PIECE HDPE ANTI-SEEP COLLAR BY LANE ENTERPRISES, OR APPROVED EQUAL. INSTALL COLLAR ON THE INDICATED SOLID HDPE PIPES APPROXIMATELY 1' FROM EDGE OF THE INFILTRATION BED OR BIORETENTION.
- CONTRACTOR SHALL PREPARE A TRAFFIC CONTROL PLAN FOR VEHICULAR AND PEDESTRIAN TRAFFIC IN ACCORDANCE WITH THE FEDERAL HIGHWAY ADMINISTRATION MANUAL ON UNIFORM TRAFFIC CONTROL DEVICES FOR STREETS AND HIGHWAYS (MUTCD). TRAFFIC CONTROL PLAN SHALL BE APPROVED BY THE CITY OF SYRACUSE PRIOR TO THE COMMENCEMENT OF ALL CONSTRUCTION ACTIVITIES. ALL TRAFFIC CONTROL DEVICES SHALL REMAIN IN PLACE AND PROPERLY MAINTAINED FOR THE DURATION OF THE WORK.
- CONTRACTOR SHALL NOTIFY CITY OF SYRACUSE DEPARTMENT OF PUBLIC WORKS AT LEAST 48 HOURS IN ADVANCE OF CONNECTION TO COMBINED SEWER MAINS. CONNECTION MUST BE MADE BY A LICENSED PLUMBER.
- CONTRACTOR SHALL NOTIFY CITY OF SYRACUSE DEPARTMENT OF WATER AT LEAST 24 HOURS IN ADVANCE OF STARTING ANY WORK.
- AT CLOSE OF PROJECT, CONTRACTOR SHALL VERIFY INVERT ELEVATIONS OF ALL STRUCTURES USING A NYS LICENSED SURVEYOR. INVERT ELEVATIONS SHALL BE PROVIDED ON RECORD DRAWINGS.

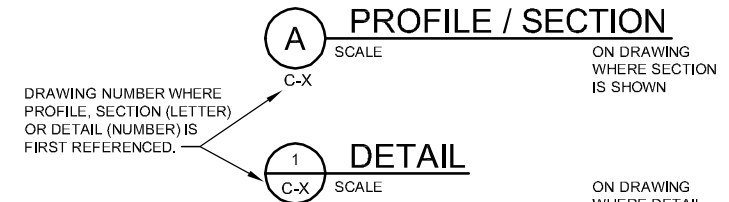
SECTION / DETAIL DESIGNATIONS

ON DRAWING WHERE SECTION VIEW, OR DETAIL IS TAKEN

PROFILE, SECTION (LETTER) OR DETAIL (NUMBER) DESIGNATION



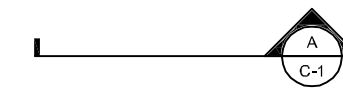
DRAWING NUMBER WHERE PROFILE, SECTION (LETTER) OR DETAIL (NUMBER) IS SHOWN



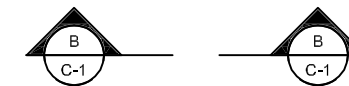
DRAWING TITLE

SCALE

ON DRAWING WHERE ONLY A TITLE IS REQUIRED WITH NO REFERENCE (e.g. PLANS, ELEVATIONS)



SECTION CALLOUT WHERE SECTION CUT IS LESS THAN OR EQUAL TO 3"



SECTION CALLOUT WHERE SECTION CUT IS GREATER THAN 3"



KEY NOTE



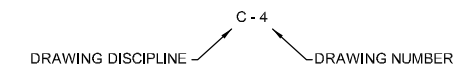
NORTH ARROW

PLANT TAG LEGEND



PLANT QUANTITY
PLANT SPECIES ABBREVIATION

DRAWING NUMBER DESIGNATIONS



DISCIPLINE LIST:

C	CIVIL
G	GENERAL
L	LANDSCAPING



DATE	01/04/13
BY	Z. MONGE
CHK	B. KLEIN
APVD	C. EIGHMEY
DR	
NO.	
DATE	
DSGN	

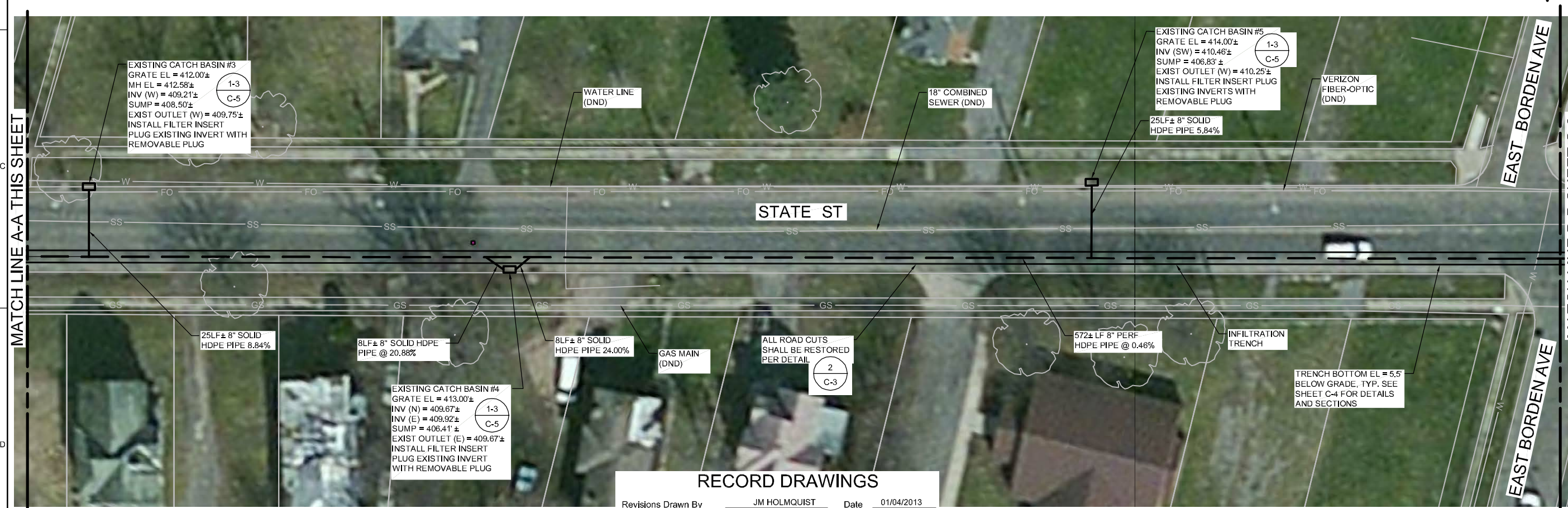
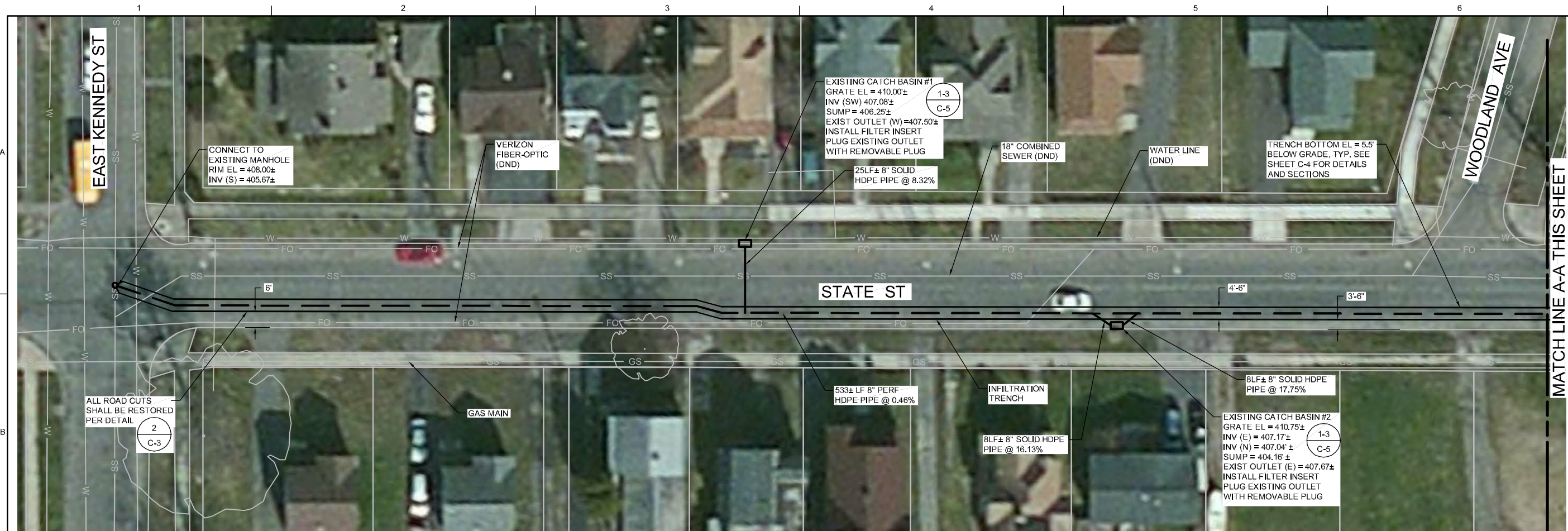
430 GENESEE STREET
SUITE 400
SYRACUSE, NY, 13202

M-52
STATE STREET RECONSTRUCTION
SYRACUSE, NY
ONONDAGA COUNTY

CH2MHILL

CIVIL
ABBREVIATIONS, LEGENDS
AND NOTES

NTS	
VERIFY SCALE	
BAR IS ONE INCH ON ORIGINAL DRAWING.	
DATE	DECEMBER 2012
PROJ	381098
DWG	G-2
SHEET	2 of 7

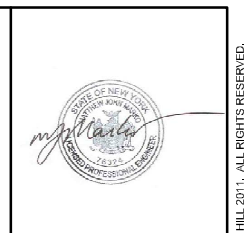


RECORD DRAWINGS

Revisions Drawn By JM HOLMQUIST Date 01/04/2013

THESE RECORD DRAWINGS HAVE BEEN PREPARED, IN PART, ON THE BASIS OF INFORMATION COMPILED BY OTHERS. THEY ARE NOT INTENDED TO REPRESENT IN DETAIL THE EXACT LOCATION, TYPE OF COMPONENT NOR MANNER OF CONSTRUCTION. THE ENGINEER WILL NOT BE RESPONSIBLE FOR ANY ERRORS OR OMISSIONS WHICH HAVE BEEN INCORPORATED INTO THE RECORD DRAWINGS.

- NOTE:**
- ROAD RECONSTRUCTION WORK (ASPHALT MILL/PAVEMENT, NEW CURB, ETC.) COMPLETED BY CITY OF SYRACUSE AFTER CONSTRUCTION OF THIS PROJECT.



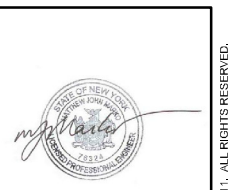
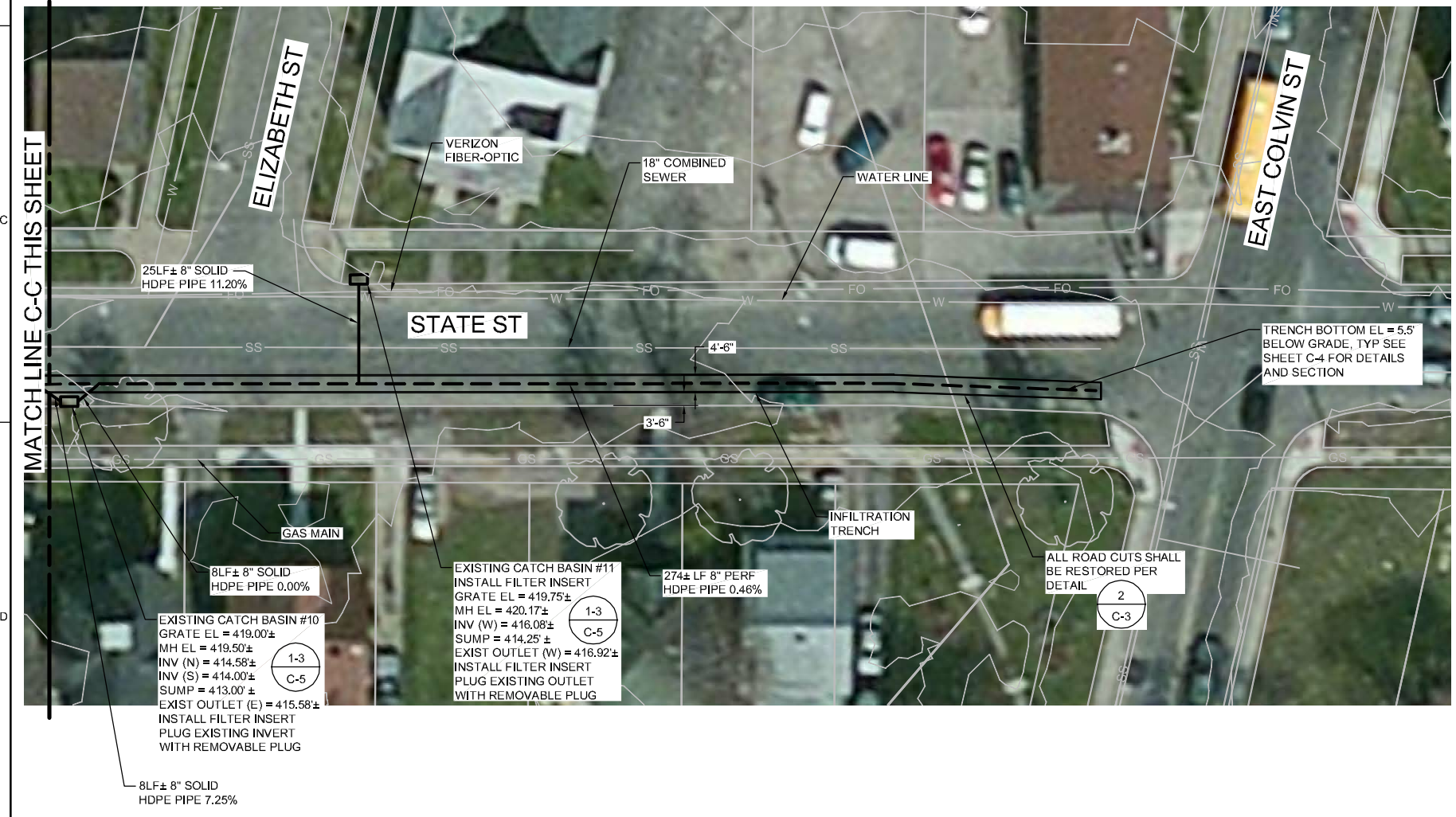
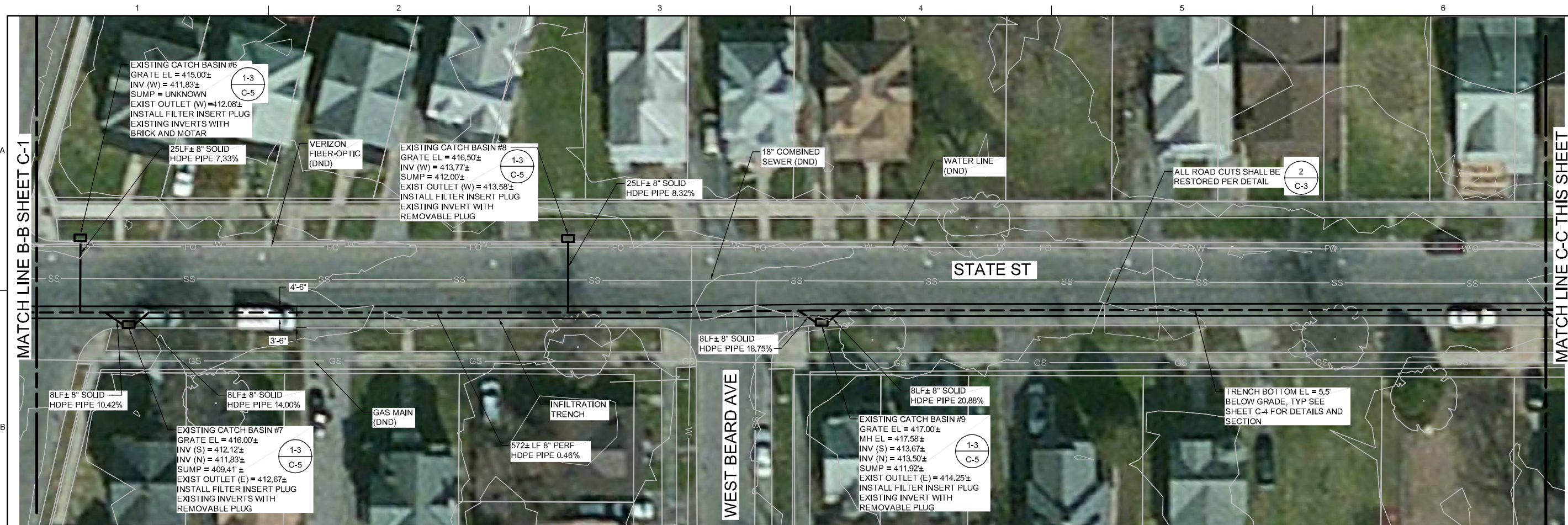
DATE	01/04/13	DESIGNED	C. EIGHLEY	DR		APPROVED	Z. MONGE
NO.		DATE		CHK	B. KLEIN	BY	M. MARKO
DRAWINGS CONFORMED TO AS BUILT CONDITIONS.							

430 GENESEE STREET
SUITE 400
SYRACUSE, NY, 13202

M-52
STATE STREET RECONSTRUCTION
SYRACUSE, NY
ONONDAGA COUNTY

1"=20'	
VERIFY SCALE	
BAR IS ONE INCH ON ORIGINAL DRAWING.	
DATE	DECEMBER 2012
PROJ	381098
DWG	C-1
SHEET	3 of 7

AS BUILT
© CH2MHILL 2011. ALL RIGHTS RESERVED.
REUSE OF DOCUMENTS: THIS DOCUMENT AND THE IDEAS AND DESIGNS INCORPORATED HEREIN, AS AN INSTRUMENT OF PROFESSIONAL SERVICE, IS THE PROPERTY OF CH2MHILL AND IS NOT TO BE USED, IN WHOLE OR IN PART, FOR ANY OTHER PROJECT WITHOUT THE WRITTEN AUTHORIZATION OF CH2MHILL.



DATE	01/04/13	NO.	1	DATE		NO.		DATE		NO.	
DESIGN		DESIGN		DESIGN		DESIGN		DESIGN		DESIGN	
DR	C. EIGHLEY	DR		DR		DR		DR		DR	
CHK	B. KLEIN	CHK		CHK		CHK		CHK		CHK	
APVD	Z. MONGE	APVD		APVD		APVD		APVD		APVD	
BY		BY		BY		BY		BY		BY	
APVD		APVD		APVD		APVD		APVD		APVD	
MARK	M.J. MARKO	MARK		MARK		MARK		MARK		MARK	

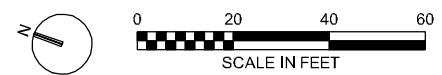
430 GENESEE STREET
 SUITE 400
 SYRACUSE, NY, 13202

M-52
 STATE STREET RECONSTRUCTION
 SYRACUSE, NY
 ONONDAGA COUNTY

RECORD DRAWINGS

Revisions Drawn By: J.M. HOLMQUIST Date: 01/04/2013
 THESE RECORD DRAWINGS HAVE BEEN PREPARED, IN PART, ON THE BASIS OF INFORMATION COMPILED BY OTHERS. THEY ARE NOT INTENDED TO REPRESENT IN DETAIL THE EXACT LOCATION, TYPE OF COMPONENT NOR MANNER OF CONSTRUCTION. THE ENGINEER WILL NOT BE RESPONSIBLE FOR ANY ERRORS OR OMISSIONS WHICH HAVE BEEN INCORPORATED INTO THE RECORD DRAWINGS.

- NOTE:**
- ROAD RECONSTRUCTION WORK (ASPHALT MILL/PAVMENT, NEW CURB, ETC.) COMPLETED BY CITY OF SYRACUSE AFTER CONSTRUCTION OF THIS PROJECT.

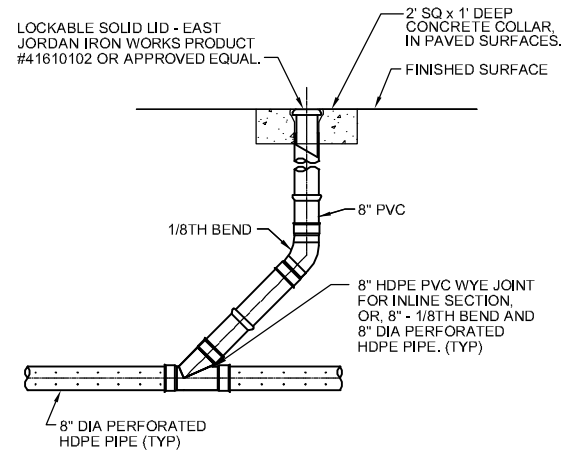


CH2MHILL

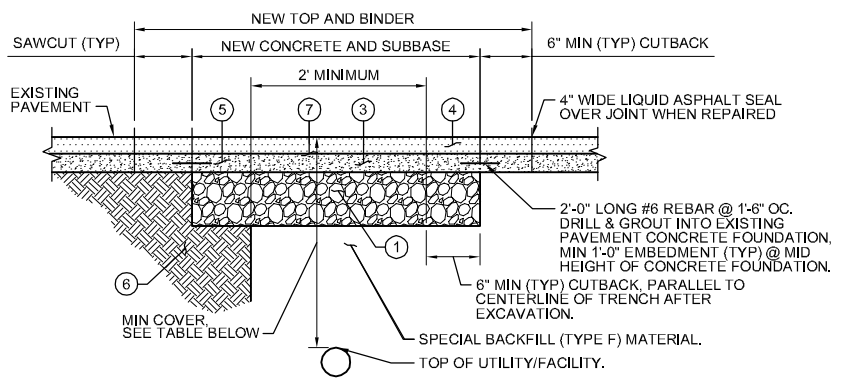
CIVIL
 SITE PLAN 2 OF 2

1"=20'
 VERIFY SCALE
 BAR IS ONE INCH ON ORIGINAL DRAWING.

DATE: DECEMBER 2012
 PROJ: 381098
 DWG: C-2
 SHEET: 4 of 7



1 CLEAN OUT DETAIL
NTS
C-1



DRAWING KEY	DESCRIPTION
1	SUBBASE COURSE, TYPE "1" RUN-OF-CRUSHER (12")
2	ASPHALT CONCRETE - TYPE 3 BINDER COURSE (ONE - 2" LIFT)
3	ASPHALT CONCRETE - TYPE 7FM TOP COURSE (ONE - 1-1/2" LIFT)
4	FIBER-REINFORCED PORTLAND CEMENT CONCRETE - 3,500 PSI (8")
5	COMPACTED SUBGRADE
6	ASPHALT TACK COAT
7	

PRIVATE UTILITY STREET CUT REPAIR:

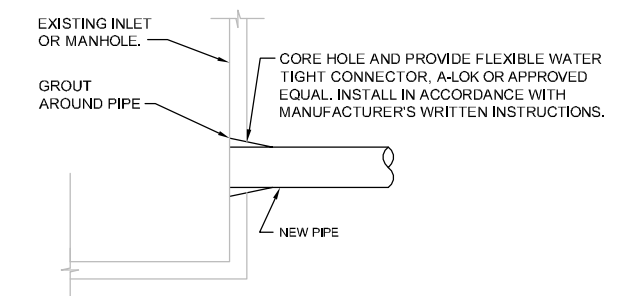
- WHEN 30% OR MORE OF THE PAVEMENT IS EXCAVATED BY PRIVATE UTILITY WORK, THE CITY, AT ITS DISCRETION, MAY REQUIRE RECONSTRUCTION FROM THE CENTER LINE TO THE EDGE/CURB OF THE ENTIRE SECTION.
- WHEN 80% OR MORE OF THE PAVEMENT LANE AREA IS EXCAVATED BY PRIVATE UTILITY THE ENTIRE AREA FROM THE CENTER LINE OF THE PAVEMENT TO THE CURB MUST BE RECONSTRUCTED.
- IF ANY PAVEMENT DISTURBANCE OCCURS WITHIN 2 FEET OF THE EDGE/CURB, PAVEMENT RECONSTRUCTION MUST BE COMPLETED TO THE EDGE/CURB.
- IN AREAS WHERE TRENCH WIDTH VARIES THE PERCENTAGES SHALL BE DETERMINED PER 100 LINEAR FEET ALONG CENTER LINE OF THE STREET. IN INTERSECTIONS THE AREA WILL BE PER QUADRANT OF THE INTERSECTION.
- EXISTING PAVEMENT IS TO BE SAWCUT FULL DEPTH TO OBTAIN A STRAIGHT AND NEAT EDGE FOR PAVING. SAWCUT IS TO BE MADE AFTER BACKFILLING THE TRENCH TO THE BOTTOM OF NEW PAVEMENT SECTION.

MINIMUM COVER: (UNLESS OTHERWISE APPROVED BY ENGINEER)	
3'-0"	GAS, ELECTRIC, CABLE, TV, TELECOMMUNICATIONS
5'-0"	WATER
3'+ (OR AS APPROVED BY CITY'S ENGINEER)	ALL OTHERS

NOTES:

- REFER TO CITY OF SYRACUSE STANDARD SPECIFICATIONS OR DETAILS. THE MINIMUM THICKNESS OF EACH LAYER OF BINDER, TOP, SUBBASE AND CONCRETE, BASE SHALL MATCH THOSE SHOWN ON STANDARD DETAILS OR MATCH EXISTING WHERE EXISTING CONDITIONS EXCEED MINIMUMS.
- IN NO CASE SHALL THE TOP OF CONCRETE BASE BE HIGHER THAN THAT OF THE SURROUNDING EXISTING CONCRETE.
- IF PAVEMENT MARKINGS OR SIGNAL LOOPS ARE DISTURBED OR DESTROYED THEY SHALL BE REPLACED IN ACCORDANCE WITH CITY OF SYRACUSE STANDARDS.
- MATCH EXISTING PAVEMENT SLOPE.
- IF, IN THE OPINION OF THE CONTRACTOR, THE EXISTING CONCRETE FOUNDATION IS IN POOR CONDITION, THE ENGINEER SHALL BE CONTACTED FOR PRIOR APPROVAL TO ELIMINATE DOWELS.

2 PIPE TRENCHING/ROAD RESTORATION
NTS
C-1



- NOTE:**
1. ALL CONNECTIONS MUST BE PERMANENTLY WATER TIGHT.

3 PIPE CONNECTION TO EXISTING STRUCTURE
NTS
C-1

RECORD DRAWINGS

Revisions Drawn By JM HOLMQUIST Date 01/04/2013
 THESE RECORD DRAWINGS HAVE BEEN PREPARED, IN PART, ON THE BASIS OF INFORMATION COMPILED BY OTHERS. THEY ARE NOT INTENDED TO REPRESENT IN DETAIL THE EXACT LOCATION, TYPE OF COMPONENT NOR MANNER OF CONSTRUCTION. THE ENGINEER WILL NOT BE RESPONSIBLE FOR ANY ERRORS OR OMISSIONS WHICH HAVE BEEN INCORPORATED INTO THE RECORD DRAWINGS.

430 GENESEE STREET
SUITE 400
SYRACUSE, NY, 13202

CH2MHILL
CIVIL

M-52
STATE STREET RECONSTRUCTION
SYRACUSE, NY
ONONDAGA COUNTY

DETAILS I OF III

DATE	DECEMBER 2012
PROJ	381098
DWG	C-3
SHEET	5 of 7

NO.	DATE	DR	CHK	BY	APVD
1	07/04/13	C EIGHLEY	B KLEIN	Z MONGE	MJ MARKO

DRAWINGS CONFORMED TO AS BUILT CONDITIONS.

NTS
VERIFY SCALE
BAR IS ONE INCH ON ORIGINAL DRAWING.
DATE: DECEMBER 2012
PROJ: 381098
DWG: C-3
SHEET: 5 of 7

